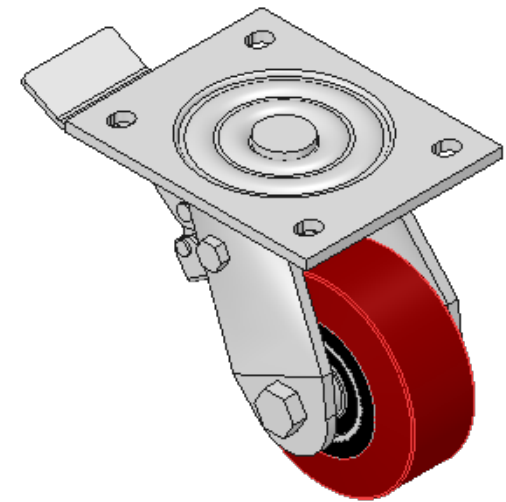
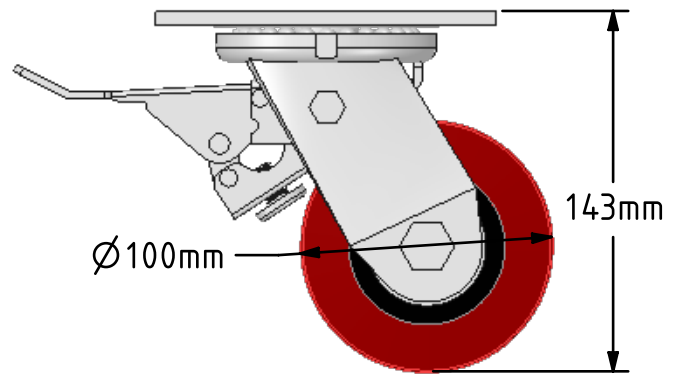
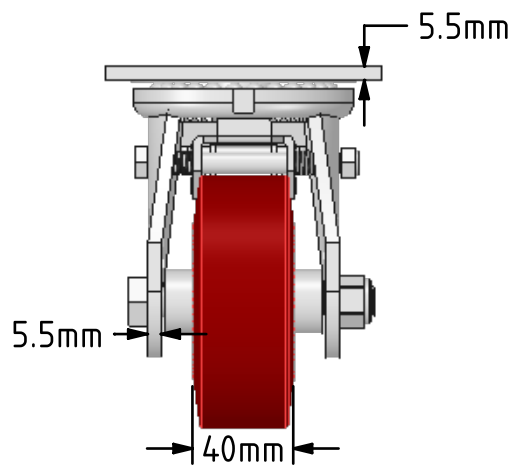
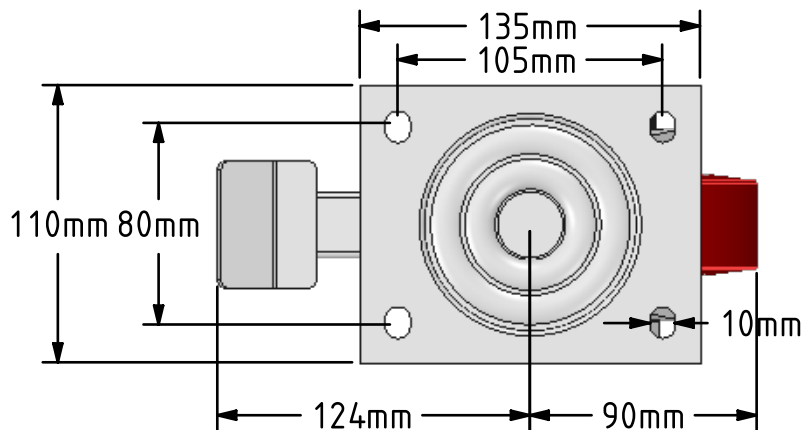


DRAWING DISCLAIMER
 COPYRIGHT OF THIS DRAWING IS RESERVED BY BIL GROUP LTD. IT IS ISSUED ON CONDITION THAT IT IS NOT REPRODUCED, COPIED, OR DISCLOSED TO A THIRD PARTY EITHER WHOLLY OR IN PART WITHOUT THE CONSENT IN WRITING OF BIL GROUP LTD.



Description:
 BZJ100PTBJSWB

Fabricated swivel castor with top plate fixing fitted with brown polyurethane tyre on cast iron centred wheel with ball bearing with a total lock brake. Wheel diameter 100mm, tread width 40mm, overall height 143mm plate size 135mm x 110mm, hole centers 105mm x 80mm. Load capacity 300kg.



	NAME	DATE
DRAWN	Matt	09/04/18
APPROVED BY	Chris	09/04/18
SCALE	1:3	09/04/18
WEIGHT	2.944kg	09/04/18



BIL Group Ltd, Porte Marsh Road, Calne
 Wiltshire, SN11 9BW, United Kingdom
 Tel +44 (0)1249 822 222 Fax: +44 (0)1249 822 300
 www.bilgroup.co.uk

TITLE	
BZJ100PTBJSWB	

UNLESS OTHERWISE SPECIFIED DIMENSIONS ARE IN MILLIMETRES
 Unspecified Tolerances
 Machining ± 0.25mm
 Fabrication ± 1mm

SIZE	DWG NO.	REV
A4	BILCW03BZJ100PTBJSWB_01	1
FILE NAME	BILCW03BZJ100PTBJSWB_01.PDF SHEET 1 OF 1	