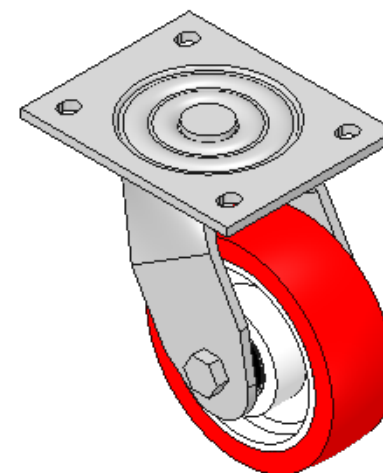
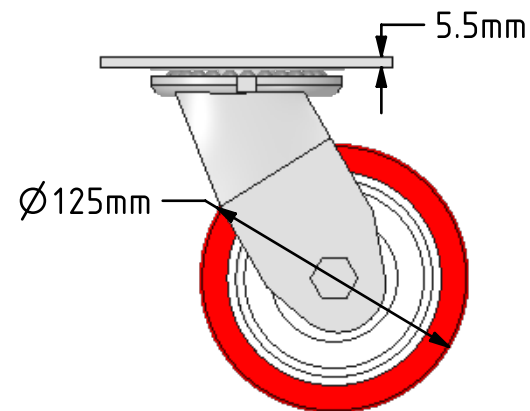
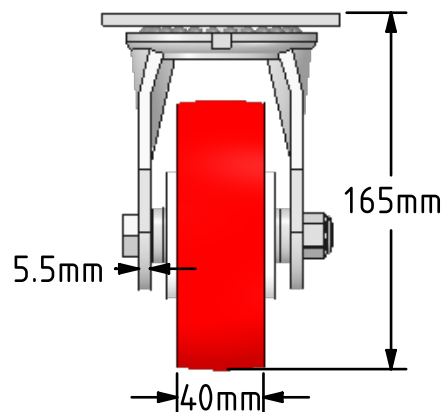
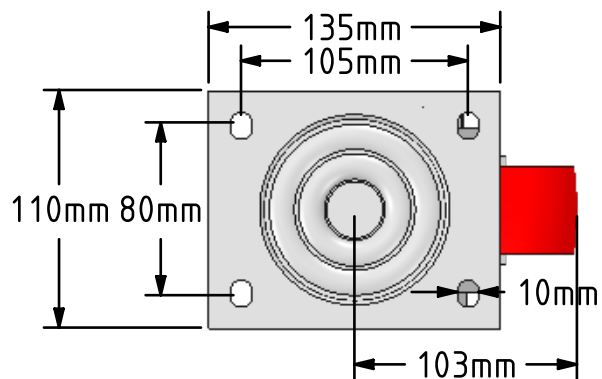



DRAWING DISCLAIMER  
 COPYRIGHT OF THIS DRAWING IS RESERVED BY BIL GROUP LTD. IT IS ISSUED ON CONDITION THAT IT IS NOT REPRODUCED, COPIED, OR DISCLOSED TO A THIRD PARTY EITHER WHOLLY OR IN PART WITHOUT THE CONSENT IN WRITING OF BIL GROUP LTD.



Description:  
 BZJ125NPBJ

Fabricated swivel castor with a flat plate fixing fitted with a red polyurethane tyre on white nylon centred wheel with ball bearings. Wheel diameter 125mm, tread width 40mm, overall height 165mm, plate size 135mm x 110mm, hole centres 105mm x 80mm. Load capacity 350kg.



	NAME	DATE	BIL Group Ltd, Porte Marsh Road, Calne Wiltshire, SN11 9BW, United Kingdom Tel +44 (0)1249 822 222 Fax: +44 (0)1249 822 300 www.bilgroup.co.uk	
DRAWN	Matt	03/04/18		
APPROVED BY	Tim W	03/04/18		
SCALE	2:7	03/04/18		
WEIGHT	2.342kg	03/04/18		
UNLESS OTHERWISE SPECIFIED DIMENSIONS ARE IN MILLIMETRES			SIZE	DWG NO.
Unspecified Tolerances Machining ± 0.25mm Fabrication ± 1mm			A4	BILCW03BZJ125NPBJ_01
			FILE NAME	BILCW03BZJ125NPBJ_01.PDF
			TITLE	BZJ125NPBJ
			REV	1
			SHEET	1 OF 1