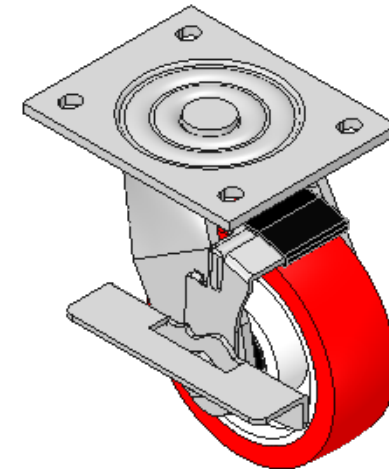
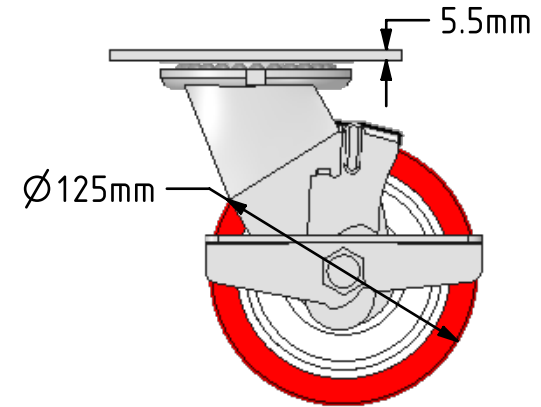
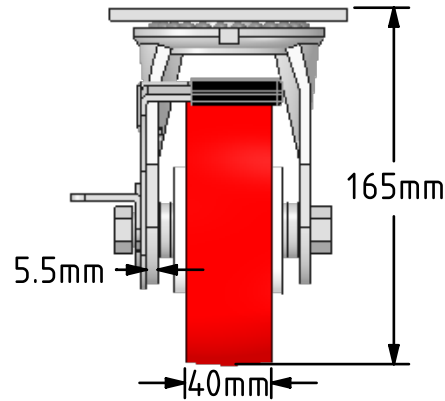
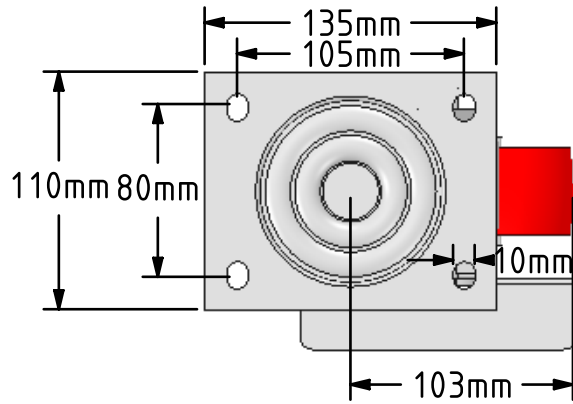


DRAWING DISCLAIMER
 COPYRIGHT OF THIS DRAWING IS RESERVED BY BIL GROUP LTD. IT IS ISSUED ON CONDITION THAT IT IS NOT REPRODUCED, COPIED, OR DISCLOSED TO A THIRD PARTY EITHER WHOLLY OR IN PART WITHOUT THE CONSENT IN WRITING OF BIL GROUP LTD.



Description:
 BZJ125NPBJBK

Fabricated swivel castor with a flat plate fixing fitted with a red polyurethane tyre on white nylon centred wheel with ball bearings and side fitting wheel brake. Wheel diameter 125mm, tread width 40mm, overall height 165mm, plate size 135mm x 110mm, hole centres 105mm x 80mm. Load capacity 350kg.



| | NAME | DATE |
|-------------|---------|----------|
| DRAWN | Matt | 03/04/18 |
| APPROVED BY | Tim W | 03/04/18 |
| SCALE | 2:7 | 03/04/18 |
| WEIGHT | 2.631kg | 03/04/18 |

UNLESS OTHERWISE SPECIFIED DIMENSIONS ARE IN MILLIMETRES
 Unspecified Tolerances
 Machining ± 0.25mm
 Fabrication ± 1mm

 BIL Group Ltd, Porte Marsh Road, Calne Wiltshire, SN11 9BW, United Kingdom
 Tel +44 (0)1249 822 222 Fax: +44 (0)1249 822 300
 www.bilgroup.co.uk

TITLE
BZJ125NPBJBK

| SIZE | DWG NO. | REV |
|-----------|--|-----|
| A4 | BILCW03BZJ125NPBJBK__02 | 2 |
| FILE NAME | BILCW03BZJ125NPBJBK__02.PDF SHEET 1 OF 1 | |