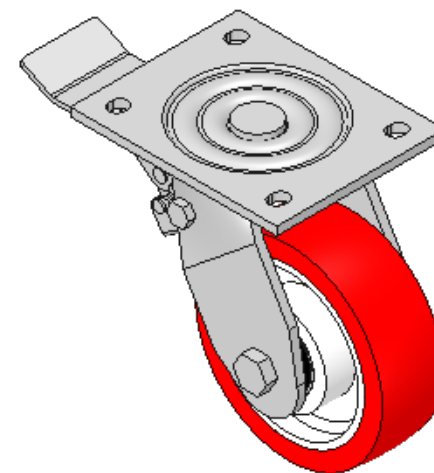
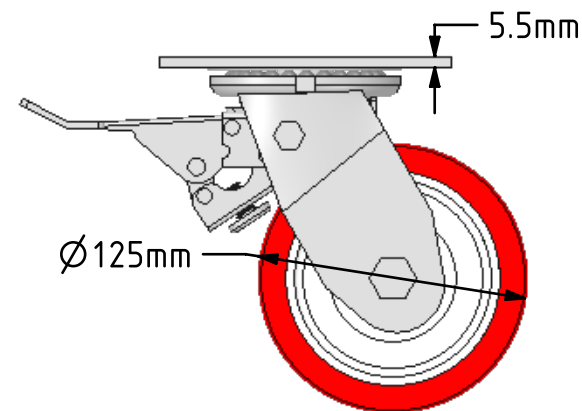
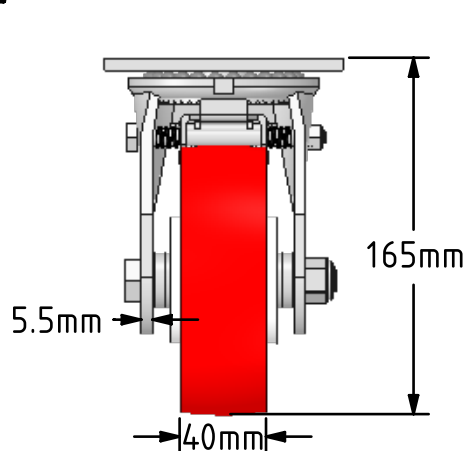
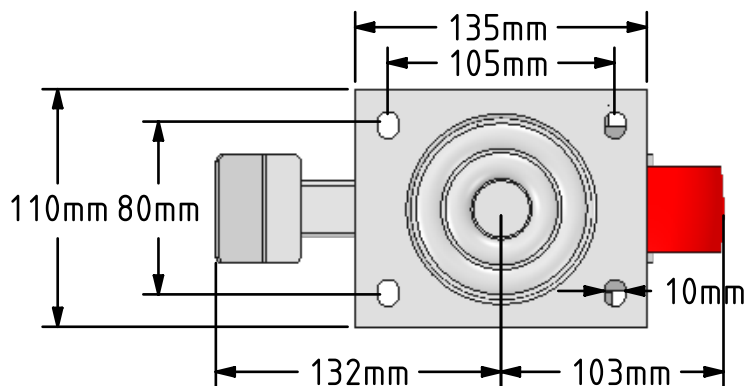



DRAWING DISCLAIMER
 COPYRIGHT OF THIS DRAWING IS RESERVED BY BIL GROUP LTD. IT IS ISSUED ON CONDITION THAT IT IS NOT REPRODUCED, COPIED, OR DISCLOSED TO A THIRD PARTY EITHER WHOLLY OR IN PART WITHOUT THE CONSENT IN WRITING OF BIL GROUP LTD.



Description:
 BZJ125NPBJSWB

Fabricated swivel castor with a flat plate fixing fitted with a red polyurethane tyre on white nylon centred wheel with ball bearings. Wheel diameter 125mm, tread width 40mm, overall height 165mm, plate size 135mm x 110mm, hole centres 105mm x 80mm. Load capacity 350kg.



	NAME	DATE	 BIL Group Ltd, Porte Marsh Road, Calne Wiltshire, SN11 9BW, United Kingdom Tel +44 (0)1249 822 222 Fax: +44 (0)1249 822 300 www.bilgroup.co.uk						
DRAWN	Matt	03/04/18							
APPROVED BY	Tim W	03/04/18							
SCALE	2:7	03/04/18							
WEIGHT	2.771kg	03/04/18	TITLE						
UNLESS OTHERWISE SPECIFIED DIMENSIONS ARE IN MILLIMETRES			BZJ125NPBJSWB						
Unspecified Tolerances Machining ± 0.25mm Fabrication ± 1mm			<table border="1"> <tr> <td>SIZE</td> <td>DWG NO.</td> <td>REV</td> </tr> <tr> <td>A4</td> <td>BILCW03BZJ125NPBJSWB_01</td> <td>1</td> </tr> </table>	SIZE	DWG NO.	REV	A4	BILCW03BZJ125NPBJSWB_01	1
SIZE	DWG NO.	REV							
A4	BILCW03BZJ125NPBJSWB_01	1							
FILE NAME			BILCW03BZJ125NPBJSWB_01.PDF SHEET 1 OF 1						