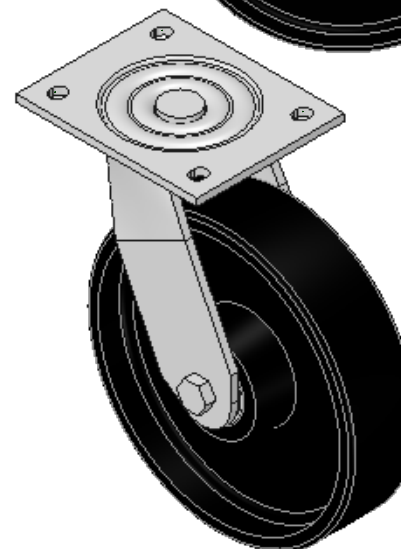
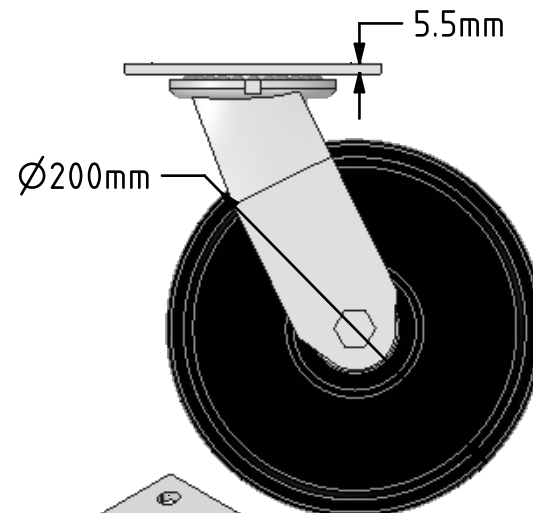
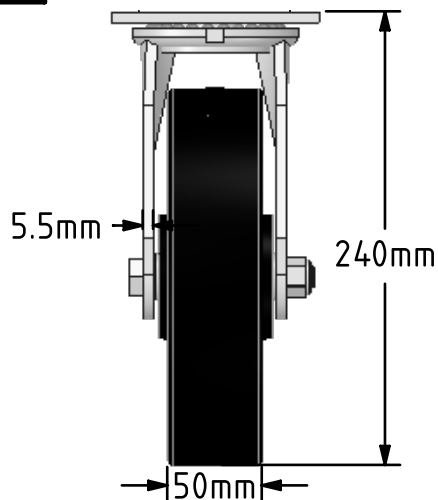
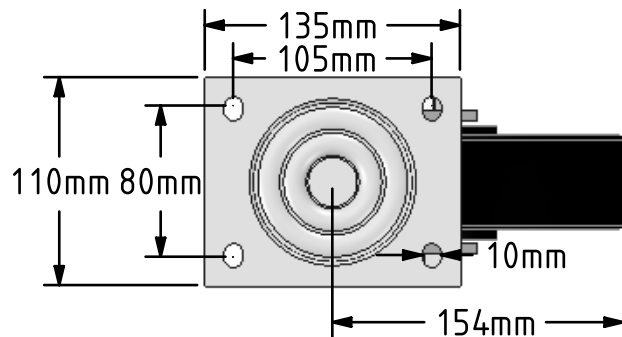



DRAWING DISCLAIMER
 COPYRIGHT OF THIS DRAWING IS RESERVED BY BIL GROUP LTD. IT IS ISSUED ON CONDITION THAT IT IS NOT REPRODUCED, COPIED, OR DISCLOSED TO A THIRD PARTY EITHER WHOLLY OR IN PART WITHOUT THE CONSENT IN WRITING OF BIL GROUP LTD.



Description:
 BZJ200CIBJ

Fabricated swivel castor with a top plate fixing fitted with a black cast iron wheel with ball bearings. Wheel diameter 200mm, tread width 50mm, overall height 240mm, top plate 135mm x 110mm, hole centres 105mm x 80mm. Load capacity 600kg.



	NAME	DATE	 BIL Group Ltd, Porte Marsh Road, Calne Wiltshire, SN11 9BW, United Kingdom Tel +44 (0)1249 822 222 Fax: +44 (0)1249 822 300 www.bilgroup.co.uk
DRAWN	Matt	29/03/18	
APPROVED BY	Tim W	29/03/18	
SCALE	1:4	29/03/18	
WEIGHT	6.693kg	29/03/18	
UNLESS OTHERWISE SPECIFIED DIMENSIONS ARE IN MILLIMETRES Unspecified Tolerances Machining ± 0.25mm Fabrication ± 1mm			TITLE <p style="text-align: center;">BZJ200CIBJ</p>
SIZE	DWG NO.		REV
A4	BILCW03BZJ200CIBJ_01		1
FILE NAME	BILCW03BZJ200CIBJ_01.PDF		SHEET 1 OF 1