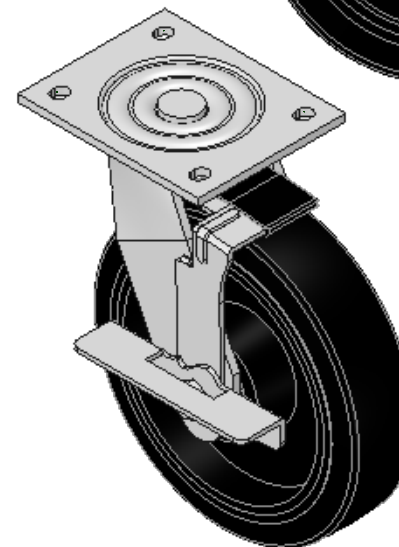
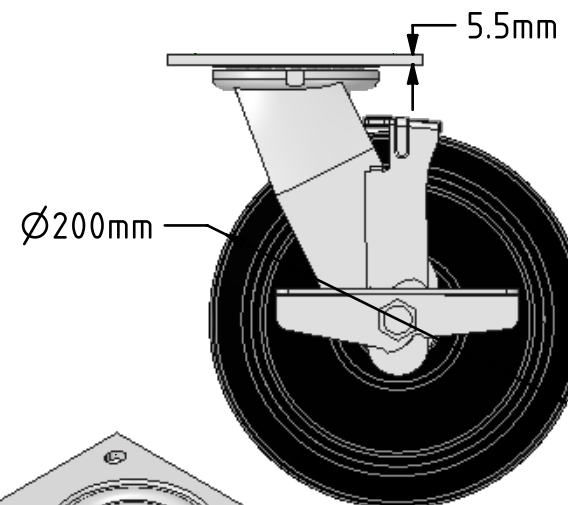
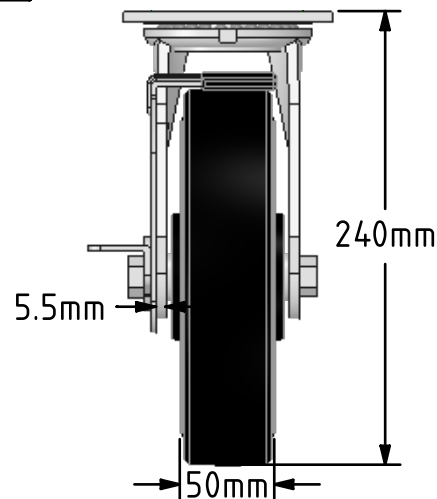
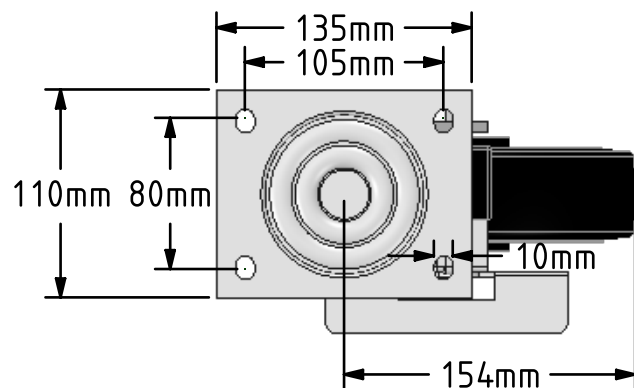


DRAWING DISCLAIMER  
 COPYRIGHT OF THIS DRAWING IS RESERVED BY BIL GROUP LTD. IT IS ISSUED ON CONDITION THAT IT IS NOT REPRODUCED, COPIED, OR DISCLOSED TO A THIRD PARTY EITHER WHOLLY OR IN PART WITHOUT THE CONSENT IN WRITING OF BIL GROUP LTD.



Description:  
 BZJ200CRBJBK

Fabricated swivel castor with a flat plate fixing fitted with a black elastic rubber tyre on cast iron centred wheel with a ball bearing and side fitting wheel brake. Wheel diameter 200mm, tread width 50mm, overall height 240mm, plate size 135mm x 110mm, hole centres 105mm x 80mm. Load capacity 450kg.



	NAME	DATE
DRAWN	Matt	29/03/18
APPROVED BY	Tim W	29/03/18
SCALE	1:4	29/03/18
WEIGHT	6.158kg	29/03/18

 BIL Group Ltd, Porte Marsh Road, Calne  
 Wiltshire, SN11 9BW, United Kingdom  
 Tel +44 (0)1249 822 222 Fax: +44 (0)1249 822 300  
 www.bilgroup.co.uk

TITLE  
**BZJ200CRBJBK**

UNLESS OTHERWISE SPECIFIED DIMENSIONS ARE IN MILLIMETRES  
 Unspecified Tolerances  
 Machining ± 0.25mm  
 Fabrication ± 1mm

SIZE	DWG NO.	REV
A4	BILCW03BZJ200CRBJBK_01	1
FILE NAME	BILCW03BZJ200CRBJBK_01.PDF SHEET 1 OF 1	