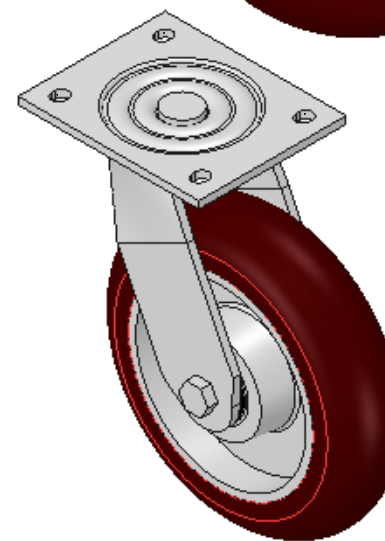
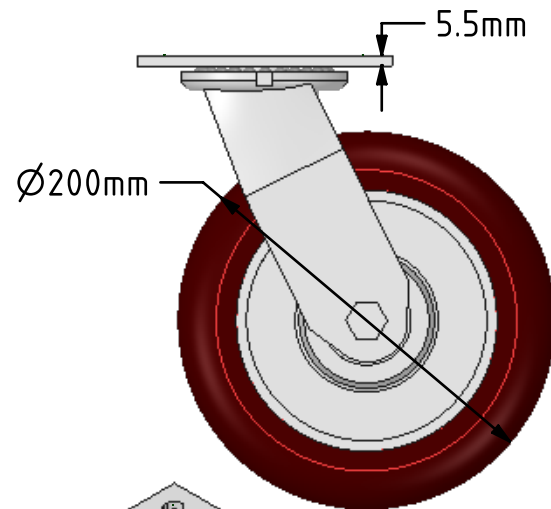
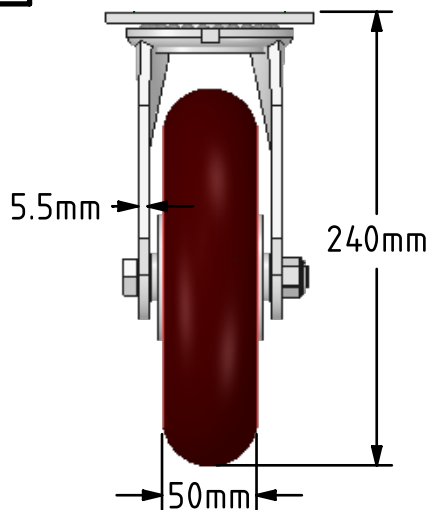
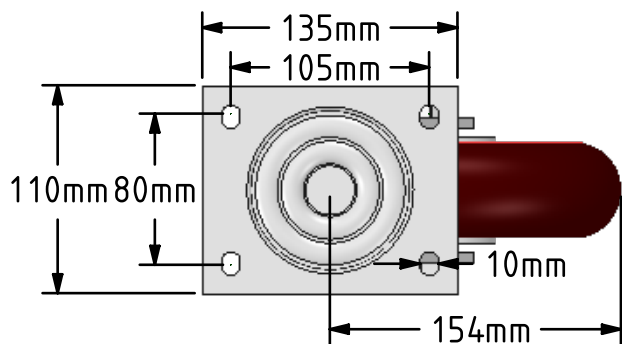


DRAWING DISCLAIMER
 COPYRIGHT OF THIS DRAWING IS RESERVED BY BIL GROUP LTD. IT IS ISSUED ON CONDITION THAT IT IS NOT REPRODUCED, COPIED, OR DISCLOSED TO A THIRD PARTY EITHER WHOLLY OR IN PART WITHOUT THE CONSENT IN WRITING OF BIL GROUP LTD.



Description:
 BZJ200RPTABJ

Fabricated swivel castor with top plate fixing fitted with a 200mm x 50mm ergonomic brown polyurethane tyred aluminium centred wheel with ball bearings overall height 240mm, plate size 138mm x 110mm, hole centres 105mm x 80mm. Load capacity 600kg.



	NAME	DATE
DRAWN	Matt	09/04/18
APPROVED BY	Chris	09/04/18
SCALE	1:4	09/04/18
WEIGHT	3.996kg	09/04/18

BIL BIL Group Ltd, Porte Marsh Road, Calne
 Wiltshire, SN11 9BW, United Kingdom
 Tel +44 (0)1249 822 222 Fax: +44 (0)1249 822 300
 www.bilgroup.co.uk

TITLE
BZJ200RPTABJ

UNLESS OTHERWISE SPECIFIED DIMENSIONS ARE IN MILLIMETRES
 Unspecified Tolerances
 Machining ± 0.25mm
 Fabrication ± 1mm

SIZE	DWG NO.	REV
A4	BILCW03BZJ200RPTABJ_01	1
FILE NAME	BILCW03BZJ200RPTABJ_01.PDF SHEET 1 OF 1	