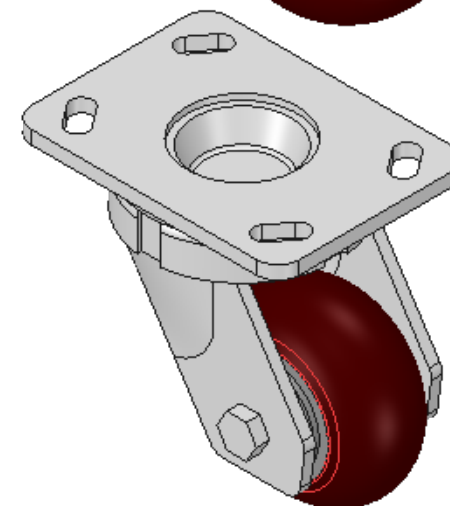
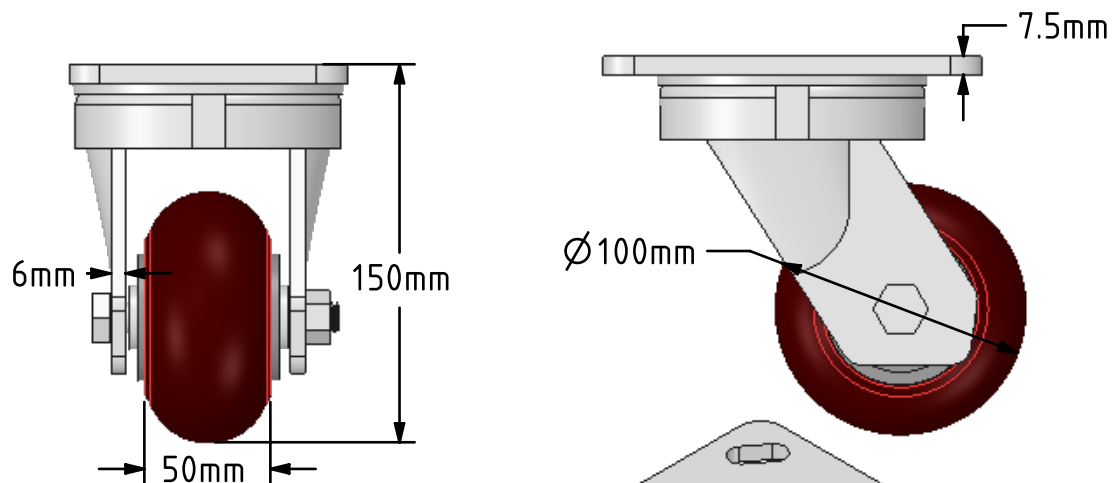
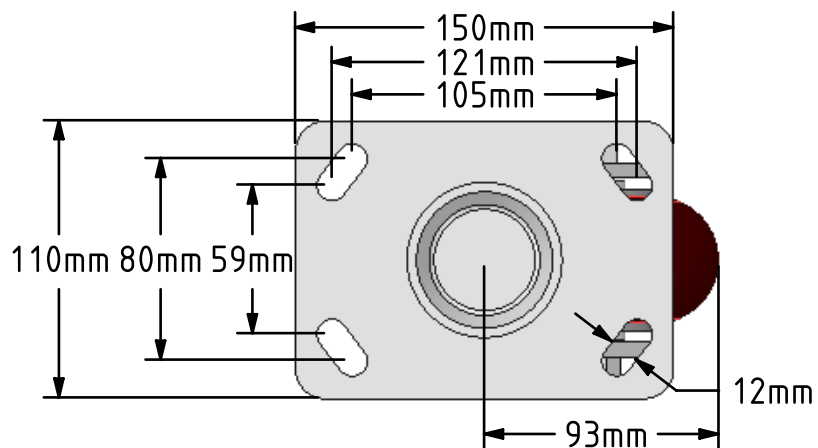



DRAWING DISCLAIMER
 COPYRIGHT OF THIS DRAWING IS RESERVED BY BIL GROUP LTD. IT IS ISSUED ON CONDITION THAT IT IS NOT REPRODUCED, COPIED, OR DISCLOSED TO A THIRD PARTY EITHER WHOLLY OR IN PART WITHOUT THE CONSENT IN WRITING OF BIL GROUP LTD.



Description:
 BZK100RPTABJ

Fabricated swivel castor with a top plate fixing fitted with a brown ergonomic polyurethane tyre on an aluminium centre wheel with ball bearings. Wheel diameter 100mm, tread width 40mm, overall height 150mm, top plate 150mm x 110mm, hole centres 105mm x 80mm or 121mm x 59mm. Load capacity 350kg



	NAME	DATE	BIL Group Ltd, Porte Marsh Road, Calne Wiltshire, SN11 9BW, United Kingdom Tel +44 (0)1249 822 222 Fax: +44 (0)1249 822 300 www.bilgroup.co.uk		
DRAWN	Matt	15/05/18			
APPROVED BY	Chris	15/05/18			
SCALE	1:3	15/05/18			
WEIGHT	3.407kg	15/05/18			
UNLESS OTHERWISE SPECIFIED DIMENSIONS ARE IN MILLIMETRES			TITLE		
Unspecified Tolerances Machining ± 0.25mm Fabrication ± 1mm			BZK100RPTABJ		
FILE NAME		BILCW03BZK100RPTABJ_01.PDF	SIZE A4	DWG NO. BILCW03BZK100RPTABJ_01	REV 1
			SHEET 1 OF 1		