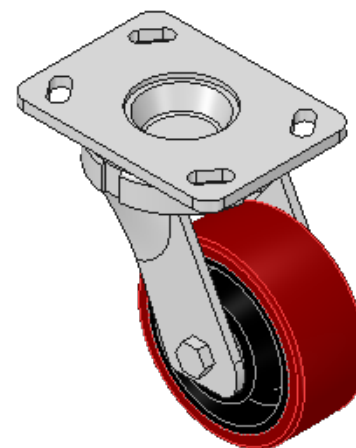
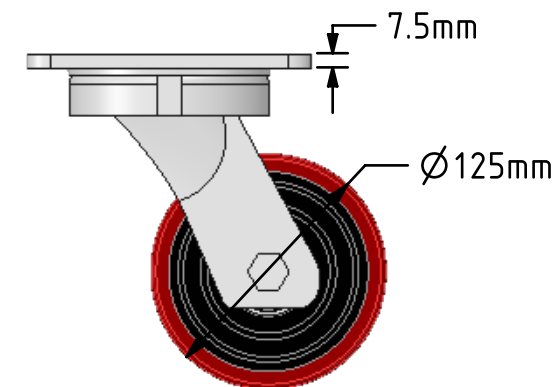
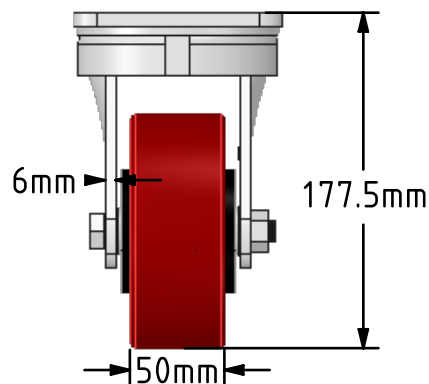
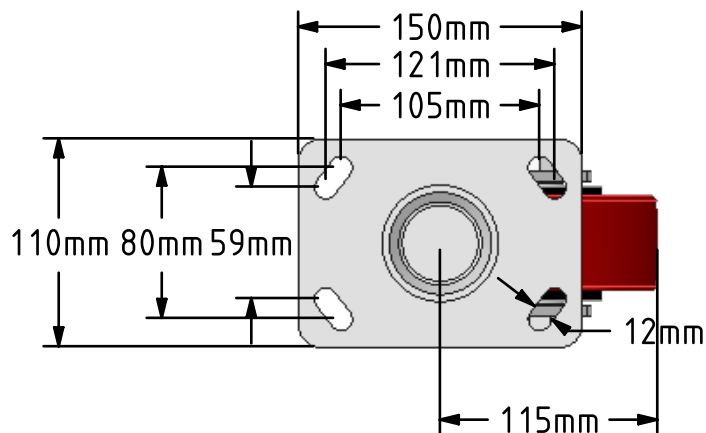


DRAWING DISCLAIMER
 COPYRIGHT OF THIS DRAWING IS RESERVED BY BIL GROUP LTD. IT IS ISSUED ON CONDITION THAT IT IS NOT REPRODUCED, COPIED, OR DISCLOSED TO A THIRD PARTY EITHER WHOLLY OR IN PART WITHOUT THE CONSENT IN WRITING OF BIL GROUP LTD.



Description:
 BZK125PTBJ

Fabricated swivel castor with a top plate fixing with a polyurethane tyred cast iron wheel with ball bearings. Wheel diameter 125mm, tread width 50mm, overall height 177mm, plate size 150mm x 110mm, hole centres 105mm x 80mm or 121mm x 59mm. Load capacity 500kg.



	NAME	DATE
DRAWN	Matt	02/10/17
APPROVED BY	Chris	02/10/17
SCALE	1:4	02/10/17
WEIGHT	5.2kg	02/10/17

UNLESS OTHERWISE SPECIFIED DIMENSIONS ARE IN MILLIMETRES
 Unspecified Tolerances
 Machining ± 0.25mm
 Fabrication ± 1mm

 BIL Group Ltd, Porte Marsh Road, Calne Wiltshire, SN11 9BW, United Kingdom
 Tel +44 (0)1249 822 222 Fax: +44 (0)1249 822 300
 www.bilgroup.co.uk

TITLE
BZK125PTBJ

SIZE	DWG NO.	REV
A4	BILCW03BZK125PTBJ__01	1

FILE NAME BILCW03BZK125PTBJ__01.PDF SHEET 1 OF 1