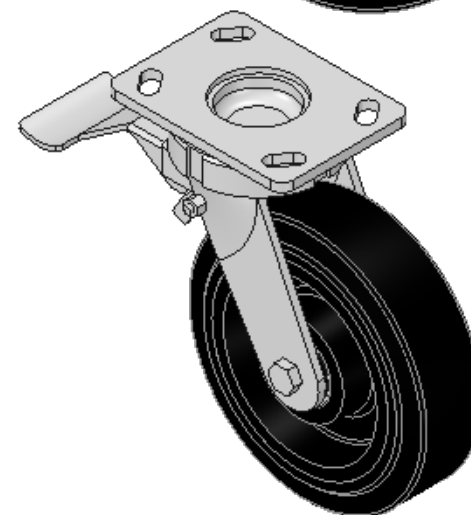
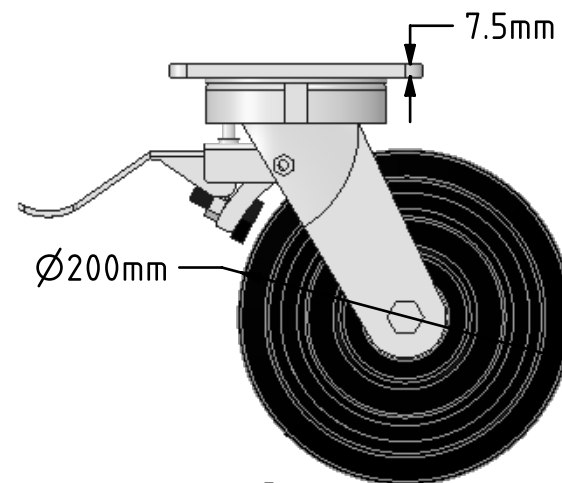
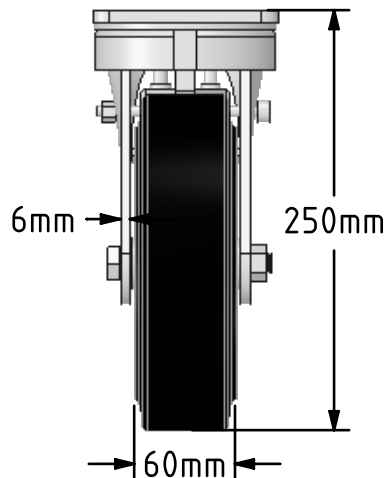
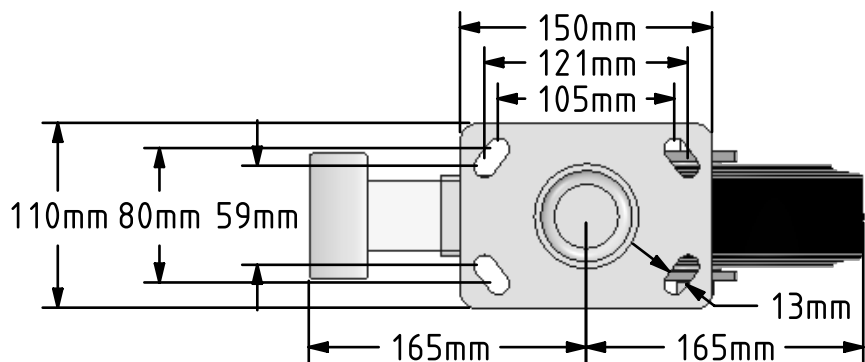



DRAWING DISCLAIMER  
 COPYRIGHT OF THIS DRAWING IS RESERVED BY BIL GROUP LTD. IT IS ISSUED ON CONDITION THAT IT IS NOT REPRODUCED, COPIED, OR DISCLOSED TO A THIRD PARTY EITHER WHOLLY OR IN PART WITHOUT THE CONSENT IN WRITING OF BIL GROUP LTD.



Description:  
 BZK200CRBJSWB

Fabricated steel swivel castor with a top plate fixing fitted with a black elastic rubber tyred on a cast iron centred wheel with a ball bearing. Wheel diameter 200mm, tread width 60mm, overall height 250mm, top plate 150mm x 110mm, hole centres 105mm x 80mm or 121mm x 59mm. Load capacity 600kg.



	NAME	DATE	BIL Group Ltd, Porte Marsh Road, Calne Wiltshire, SN11 9BW, United Kingdom Tel +44 (0)1249 822 222 Fax: +44 (0)1249 822 300 www.bilgroup.co.uk	
DRAWN	Matt	10/05/18		
APPROVED BY	Tim W	10/05/18		
SCALE	2:9	10/05/18		
WEIGHT	8.729kg	10/05/18		
UNLESS OTHERWISE SPECIFIED DIMENSIONS ARE IN MILLIMETRES			TITLE	
Unspecified Tolerances Machining ± 0.25mm Fabrication ± 1mm			BZK200CRBJSWB	
			SIZE A4	DWG NO. BILCW03BZK200CRBJSWB_01
			FILE NAME BILCW03BZK200CRBJSWB_01.PDF	REV 1
			SHEET 1 OF 1	