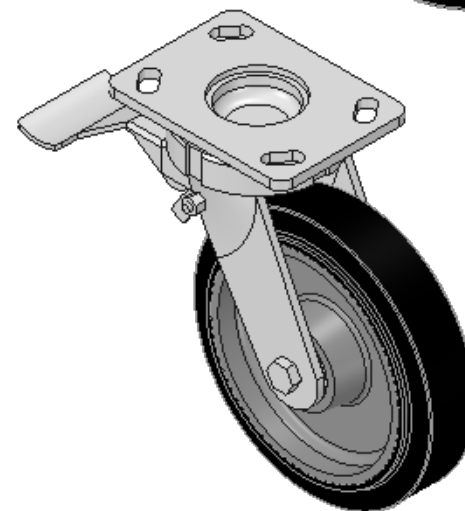
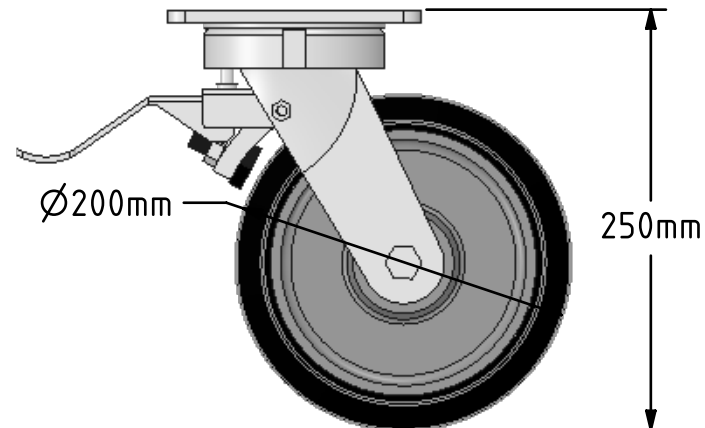
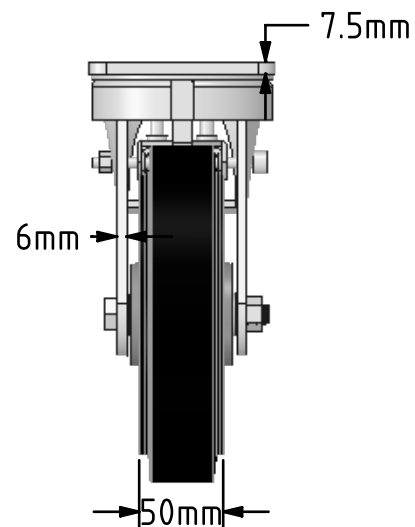
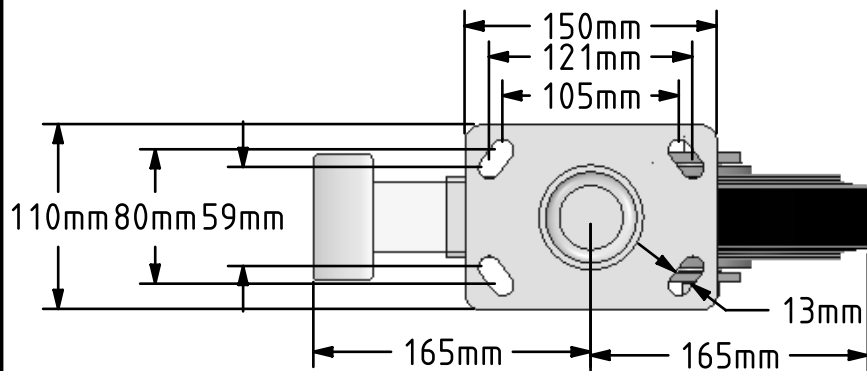


**DRAWING DISCLAIMER**

COPYRIGHT OF THIS DRAWING IS RESERVED BY BIL GROUP LTD. IT IS ISSUED ON CONDITION THAT IT IS NOT REPRODUCED, COPIED, OR DISCLOSED TO A THIRD PARTY EITHER WHOLLY OR IN PART WITHOUT THE CONSENT IN WRITING OF BIL GROUP LTD.



**Description:**  
BZK200CUBJSWB

Fabricated swivel castor with top plate fixing fitted with a black elastic rubber tyre on a cast iron centred wheel with ball bearings and a total lock brake. Wheel diameter 200mm, tread width 50mm, overall height 250mm, top plate 150mm x 110mm, hole centres 105mm x 80mm or 121mm x 59mm. Load capacity 500kg.

- At 6 kph speed, the load of each wheel is advised to be 80% of the load at 4kph.
- At 10 kph speed, the load of each wheel is advised to be 55% of the load at 4 kph.
- At 16 kph speed, the load of each wheel is advised to be 45% of the load at 4kph.
- At 20 kph speed, the load of each wheel is advised to be 35% of the load at 4 kph.
- No data for elastic rubber wheel over 20 kph.



	NAME	DATE
DRAWN	Matt	11/07/18
APPROVED BY	Tim W	11/07/18
SCALE	2:9	11/07/18
WEIGHT	6.975kg	11/07/18



BIL Group Ltd, Porte Marsh Road, Calne  
Wiltshire, SN11 9BW, United Kingdom  
Tel +44 (0)1249 822 222 Fax: +44 (0)1249 822 300  
www.bilgroup.co.uk

TITLE

**BZK200CUBJSWB**

UNLESS OTHERWISE SPECIFIED DIMENSIONS ARE IN MILLIMETRES

Unspecified Tolerances  
Machining ± 0.25mm  
Fabrication ± 1mm

SIZE	DWG NO.	REV
A4	BILCW03BZK200CUBJSWB_01	1

FILE NAME BILCW03BZK200CUBJSWB\_01.PDF SHEET 1 OF 1