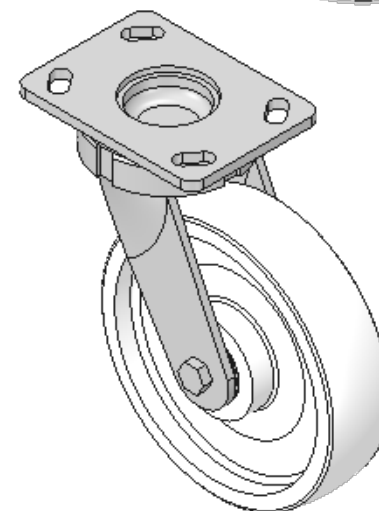
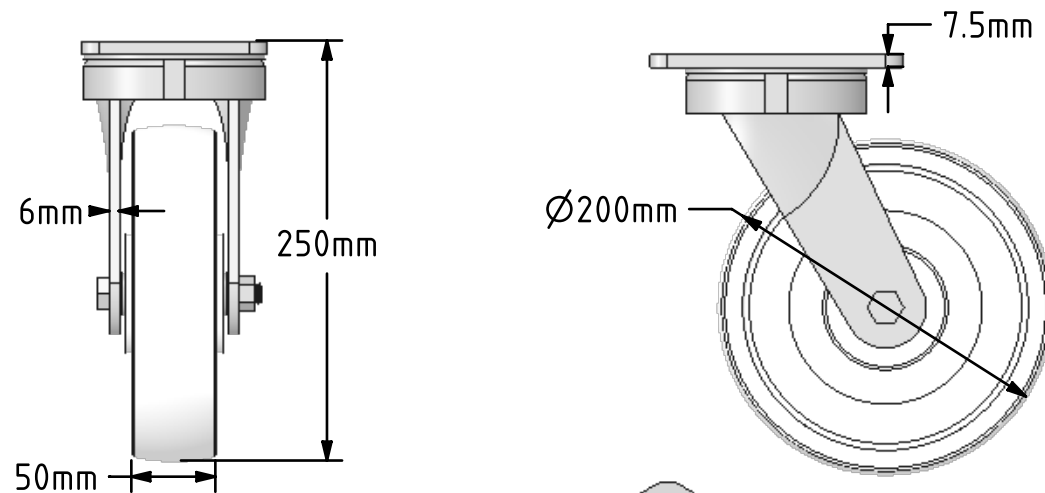
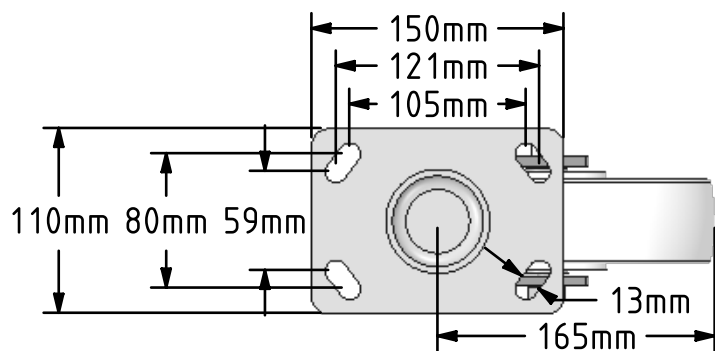



DRAWING DISCLAIMER
 COPYRIGHT OF THIS DRAWING IS RESERVED BY BIL GROUP LTD. IT IS ISSUED ON CONDITION THAT IT IS NOT REPRODUCED, COPIED, OR DISCLOSED TO A THIRD PARTY EITHER WHOLLY OR IN PART WITHOUT THE CONSENT IN WRITING OF BIL GROUP LTD.



Description:
 BZK200NYBJ

Fabricated swivel castor with a top plate fixing fitted with a white nylon wheel with ball bearings. Wheel diameter 200mm, tread width 50mm, overall height 250mm, top plate 150mm x 110mm, hole centres 105mm x 80mm or 121mm x 59mm. Load capacity 1000kg.



| | | | |
|---|---------|----------|---|
| | NAME | DATE |  BIL Group Ltd, Porte Marsh Road, Calne Wiltshire, SN11 9BW, United Kingdom Tel +44 (0)1249 822 222 Fax: +44 (0)1249 822 300 www.bilgroup.co.uk |
| DRAWN | Matt | 01/02/18 | |
| APPROVED BY | Tim W | 01/02/18 | TITLE <p style="text-align: center;">BZK200NYBJ</p> |
| SCALE | 2.9 | 01/02/18 | |
| WEIGHT | 4.247kg | 01/02/18 | |
| UNLESS OTHERWISE SPECIFIED DIMENSIONS ARE IN MILLIMETRES Unspecified Tolerances Machining ± 0.25mm Fabrication ± 1mm | | | SIZE DWG NO. A4 BILCW03BZK200NYBJ_01 |
| | | | REV 1 |
| FILE NAME | | | BILCW03BZK200NYBJ_01.PDF SHEET 1 OF 1 |