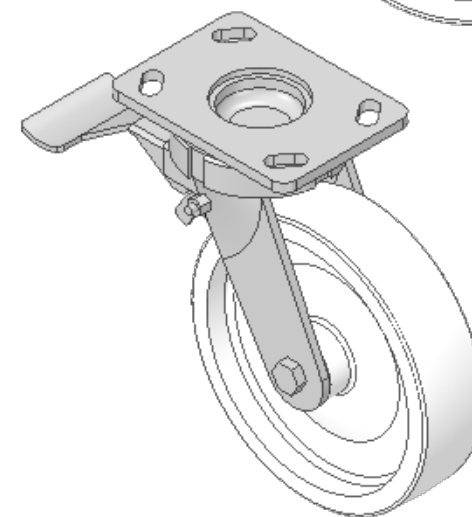
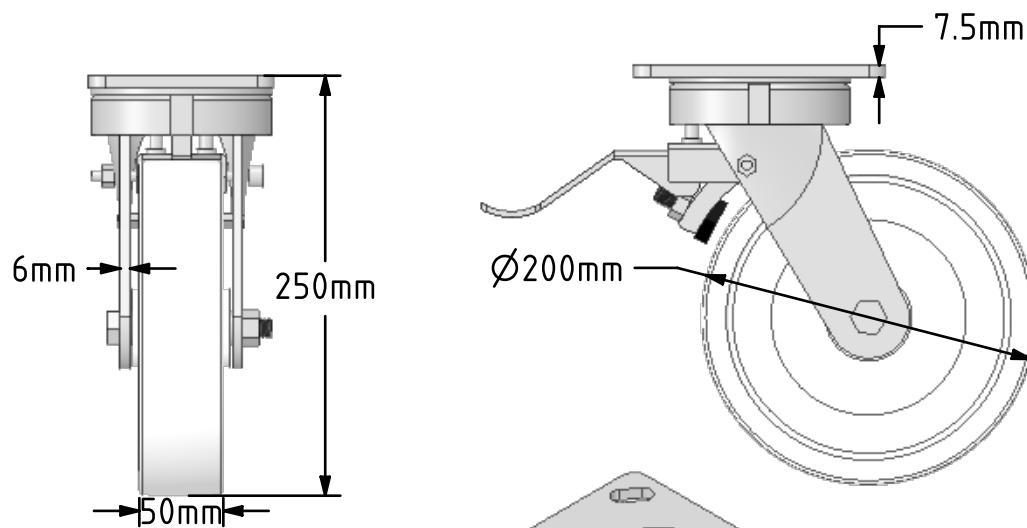
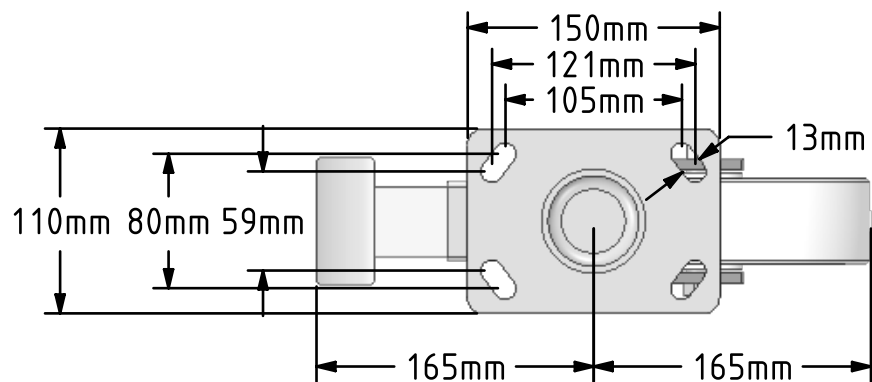


DRAWING DISCLAIMER
 COPYRIGHT OF THIS DRAWING IS RESERVED BY BIL GROUP LTD. IT IS ISSUED ON CONDITION THAT IT IS NOT REPRODUCED, COPIED, OR DISCLOSED TO A THIRD PARTY EITHER WHOLLY OR IN PART WITHOUT THE CONSENT IN WRITING OF BIL GROUP LTD.



Description:
 BZK200NYBSWB

Fabricated swivel castor with a top plate fixing fitted with a white nylon wheel with roller bearings and total lock brakes, Wheel diameter 200mm, tread width 50mm, overall height 250mm, top plate 150mm x 110mm, hole centres 105mm x 80mm or 121mm x 59mm. Load capacity 1000kg.



	NAME	DATE
DRAWN	Matt	09/05/19
APPROVED BY	Chris	09/05/19
SCALE	2:9	09/05/19
WEIGHT	4.597kg	09/05/19

UNLESS OTHERWISE SPECIFIED DIMENSIONS ARE IN MILLIMETRES

Unspecified Tolerances
 Machining ± 0.25mm
 Fabrication ± 1mm



BIL Group Ltd, Porte Marsh Road, Calne
 Wiltshire, SN11 9BW, United Kingdom
 Tel +44 (0)1249 822 222 Fax: +44 (0)1249 822 300
 www.bilgroup.co.uk

TITLE

BZK200NYBSWB

SIZE DWG NO.

A4

BILCW03BZK200NYBSWB_01

REV

1

FILE NAME BILCW03BZK200NYBSWB_01.PDF

SHEET 1 OF 1