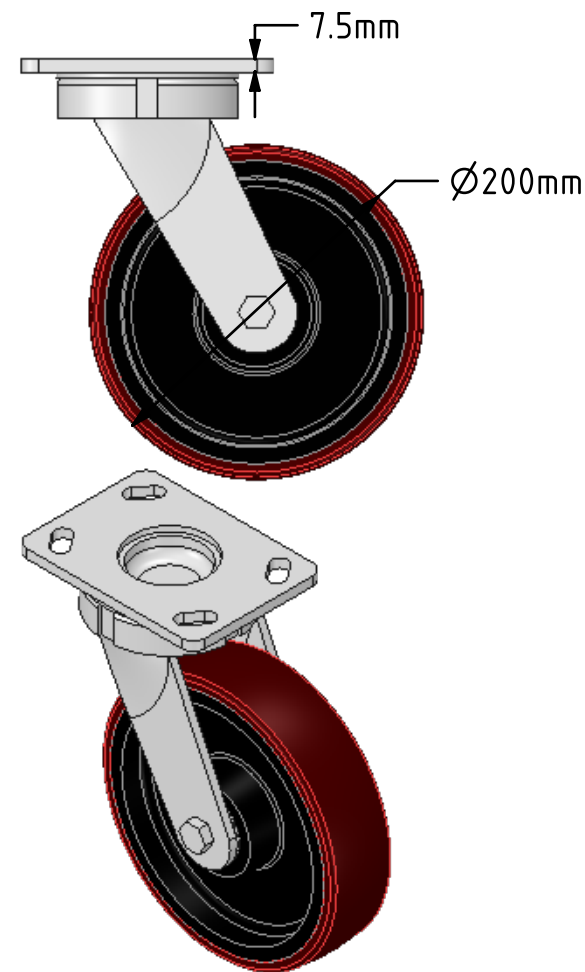
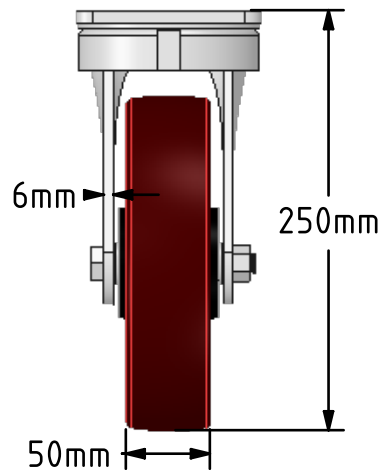
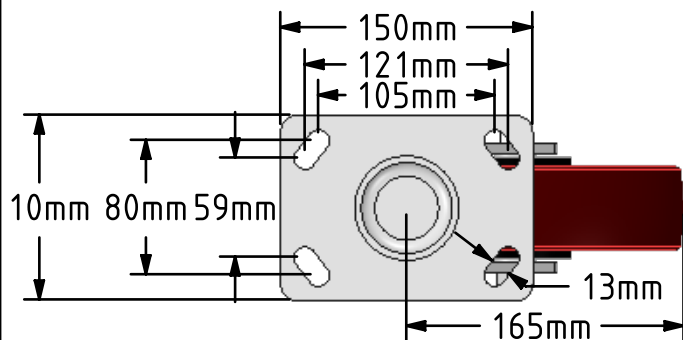



DRAWING DISCLAIMER
 COPYRIGHT OF THIS DRAWING IS RESERVED BY BIL GROUP LTD. IT IS ISSUED ON CONDITION THAT IT IS NOT REPRODUCED, COPIED, OR DISCLOSED TO A THIRD PARTY EITHER WHOLLY OR IN PART WITHOUT THE CONSENT IN WRITING OF BIL GROUP LTD.



Description:
 BZK200PTBJ

Fabricated swivel castor with a top plate fixing fitted with a brown polyurethane tyre on a cast iron centred ball bearing wheel. Wheel diameter 200mm, tread width 50mm, overall height 250mm, top plate 150mm x 110mm, hole centres 105mm x 80mm or 121mm x 59mm. Load capacity 1000kg.



| | | | | |
|---|--------|----------|---|---------------------------------------|
| | NAME | DATE |  BIL Group Ltd, Porte Marsh Road, Calne Wiltshire, SN11 9BW, United Kingdom Tel +44 (0)1249 822 222 Fax: +44 (0)1249 822 300 www.bilgroup.co.uk | |
| DRAWN | Matt | 02/02/18 | TITLE | |
| APPROVED BY | Tim W | 02/02/18 | BZK200PTBJ | |
| SCALE | 2:9 | 02/02/18 | SIZE | DWG NO. |
| WEIGHT | 6.83kg | 02/02/18 | A4 | BILCW03BZK200PTBJ_02 |
| UNLESS OTHERWISE SPECIFIED DIMENSIONS ARE IN MILLIMETRES | | | REV | 2 |
| Unspecified Tolerances Machining ± 0.25mm Fabrication ± 1mm | | | FILE NAME | BILCW03BZK200PTBJ_02.PDF SHEET 1 OF 1 |