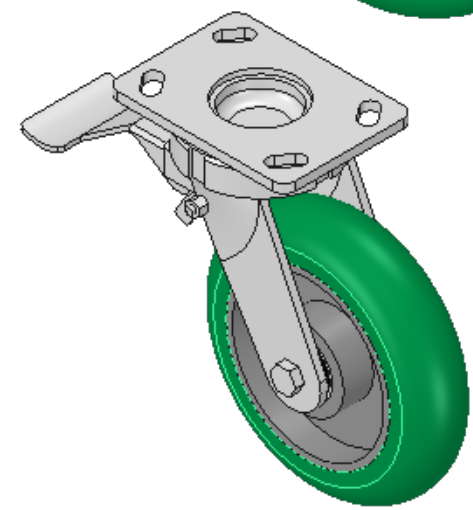
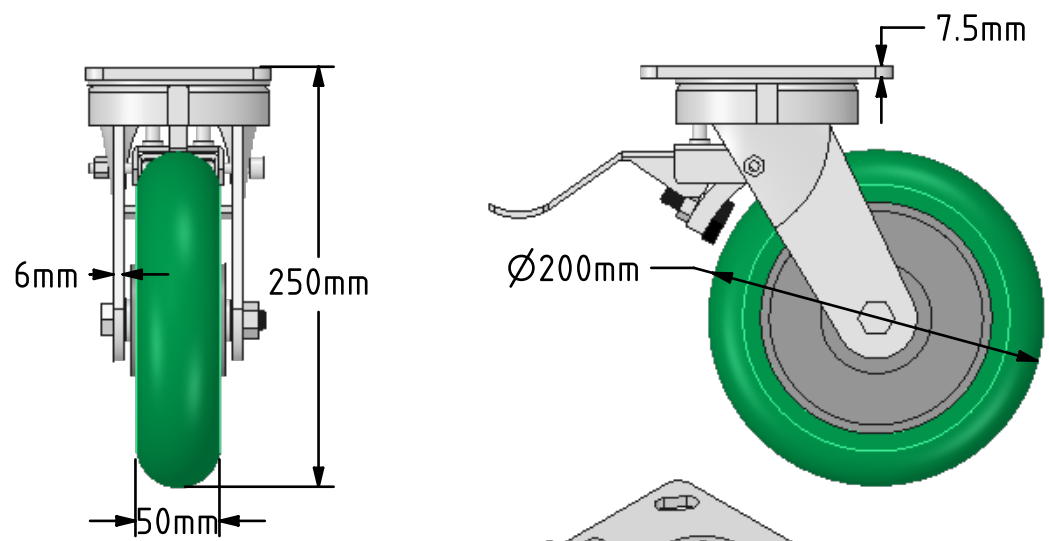
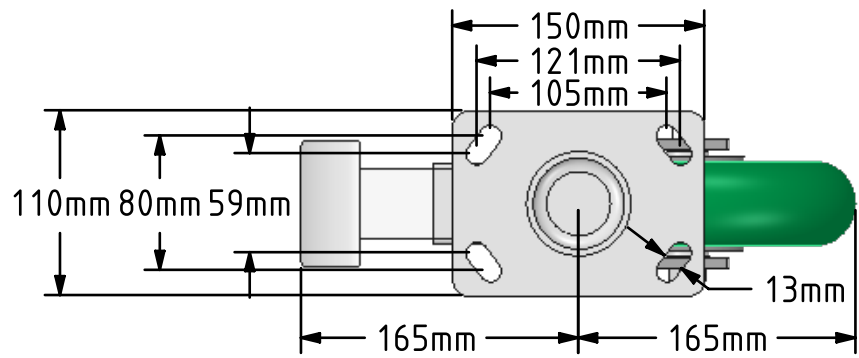



DRAWING DISCLAIMER
 COPYRIGHT OF THIS DRAWING IS RESERVED BY BIL GROUP LTD. IT IS ISSUED ON CONDITION THAT IT IS NOT REPRODUCED, COPIED, OR DISCLOSED TO A THIRD PARTY EITHER WHOLLY OR IN PART WITHOUT THE CONSENT IN WRITING OF BIL GROUP LTD.



Description:
 BZK200SRPTABJSWB
 Fabricated swivel castor with a top plate fixing fitted with a 85 Shore A ergonomic green polyurethane wheel on an aluminium centre with ball bearings and a total lock brake. Wheel diameter 200mm, tread width 50mm, overall height 250mm, top plate 150mm x 110mm, hole centres 105mm x 80mm or 121mm x 59mm. Load capacity 775kg



| | NAME | DATE | BIL Group Ltd, Porte Marsh Road, Calne Wiltshire, SN11 9BW, United Kingdom Tel +44 (0)1249 822 222 Fax: +44 (0)1249 822 300 www.bilgroup.co.uk | |
|---|---------|----------|--|----------------------------|
| DRAWN | Matt | 17/05/18 |  TITLE BZK200SRPTABJSWB | |
| APPROVED BY | Chris | 17/05/18 | | |
| SCALE | 2:9 | 17/05/18 | | |
| WEIGHT | 5.649kg | 17/05/18 | | |
| UNLESS OTHERWISE SPECIFIED DIMENSIONS ARE IN MILLIMETRES | | | SIZE | DWG NO. |
| Unspecified Tolerances Machining ± 0.25mm Fabrication ± 1mm | | | A4 | BILCW03BZK200SRPTABJSWB_01 |
| | | | REV | 1 |
| | | | FILE NAME BILCW03BZK200SRPTABJSWB_01.PDF SHEET 1 OF 1 | |