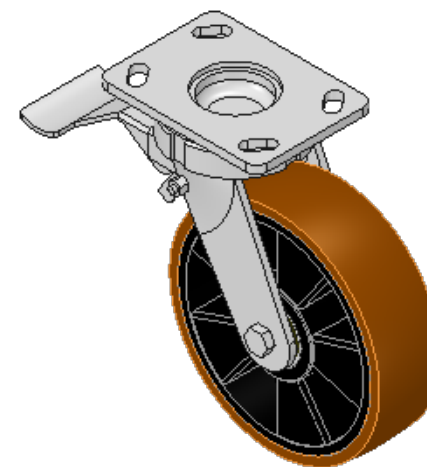
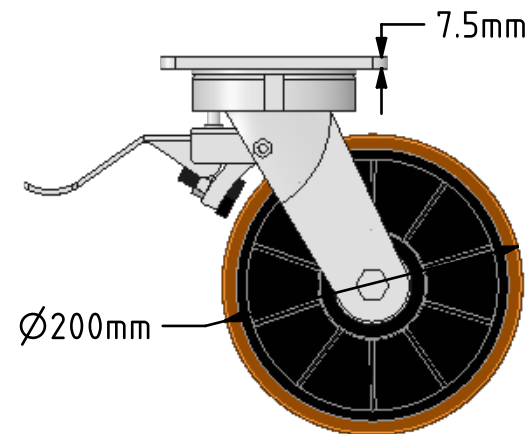
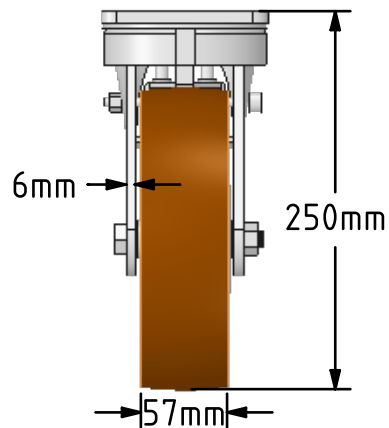
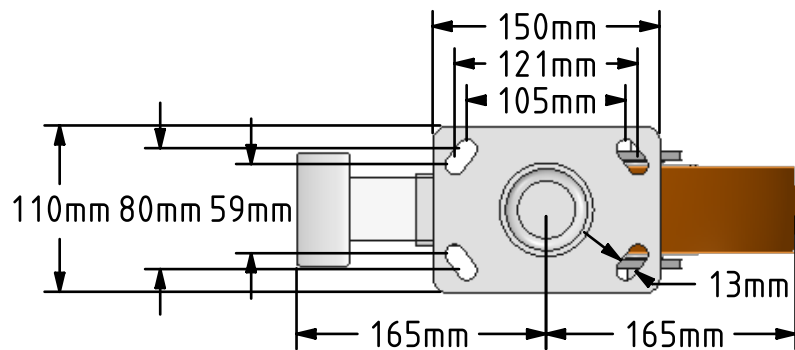



DRAWING DISCLAIMER
 COPYRIGHT OF THIS DRAWING IS RESERVED BY BIL GROUP LTD. IT IS ISSUED ON CONDITION THAT IT IS NOT REPRODUCED, COPIED, OR DISCLOSED TO A THIRD PARTY EITHER WHOLLY OR IN PART WITHOUT THE CONSENT IN WRITING OF BIL GROUP LTD.



Description:
 BZK200XPNBJSWB

Fabricated swivel castor with a top plate fixing fitted with a brown polyurethane tyred nylon centred wheel with ball bearings and a total lock brake, Wheel diameter 200mm, tread width 57mm, overall height 250mm, top plate 150mm x 110mm, hole centres 105mm x 80mm or 121mm x 59mm. Load capacity 800kg.



	NAME	DATE	BIL Group Ltd, Porte Marsh Road, Calne Wiltshire, SN11 9BW, United Kingdom Tel +44 (0)1249 822 222 Fax: +44 (0)1249 822 300 www.bilgroup.co.uk	
DRAWN	Matt	16/05/18		
APPROVED BY	Chris	16/05/18		
SCALE	1:5	16/05/18		
WEIGHT	5.16kg	16/05/18		
UNLESS OTHERWISE SPECIFIED DIMENSIONS ARE IN MILLIMETRES			TITLE	
Unspecified Tolerances Machining ± 0.25mm Fabrication ± 1mm			BZK200XPNBJSWB	
SIZE A4		DWG NO.	BILCW03BZK200XPNBJSWB_01	REV 1
FILE NAME			BILCW03BZK200XPNBJSWB_01.PDF	SHEET 1 OF 1