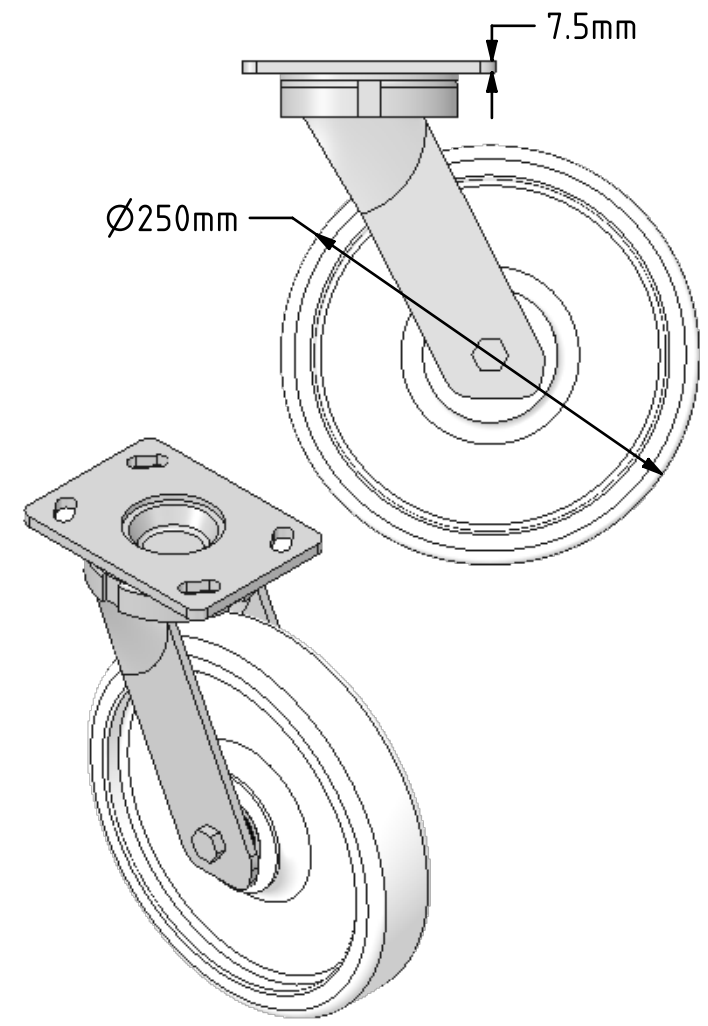
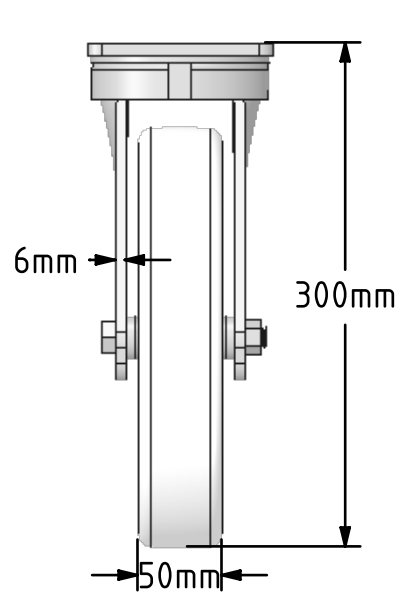
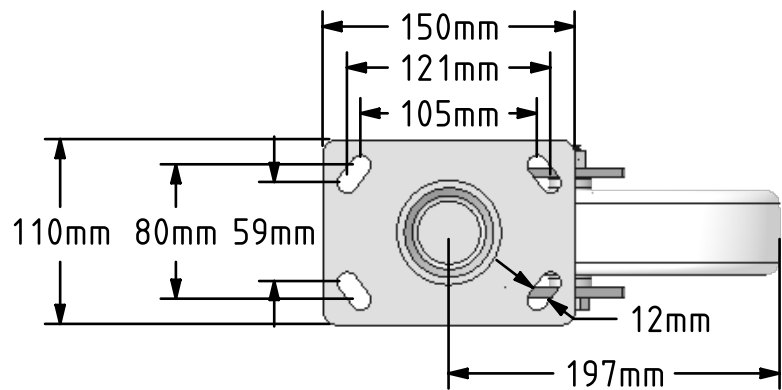



DRAWING DISCLAIMER
 COPYRIGHT OF THIS DRAWING IS RESERVED BY BIL GROUP LTD. IT IS ISSUED ON CONDITION THAT IT IS NOT REPRODUCED, COPIED, OR DISCLOSED TO A THIRD PARTY EITHER WHOLLY OR IN PART WITHOUT THE CONSENT IN WRITING OF BIL GROUP LTD.



Description:
 BZK250NYBJ
 Fabricated swivel castor with a top plate fixing fitted with a white nylon wheel with ball journal bearings. Wheel diameter 250mm, tread width 50mm, overall height 300mm, top plate 150mm x 110mm, hole centres 105mm x 80mm or 121mm x 59mm. Load capacity 1200kg.



	NAME	DATE	 BIL Group Ltd, Porte Marsh Road, Calne Wiltshire, SN11 9BW, United Kingdom Tel +44 (0)1249 822 222 Fax: +44 (0)1249 822 300 www.bilgroup.co.uk			
DRAWN	Matt	10/07/18				
APPROVED BY	Tim W	10/07/18				
SCALE	2:9	10/07/18				
WEIGHT	5.15kg	10/07/18				
UNLESS OTHERWISE SPECIFIED DIMENSIONS ARE IN MILLIMETRES Unspecified Tolerances Machining ± 0.25mm Fabrication ± 1mm			TITLE <p style="text-align: center;">BZK250NYBJ</p>	SIZE A4	DWG NO. BILCW03BZK250NYBJ_01	REV 1
			FILE NAME	BILCW03BZK250NYBJ_01.PDF	SHEET 1 OF 1	