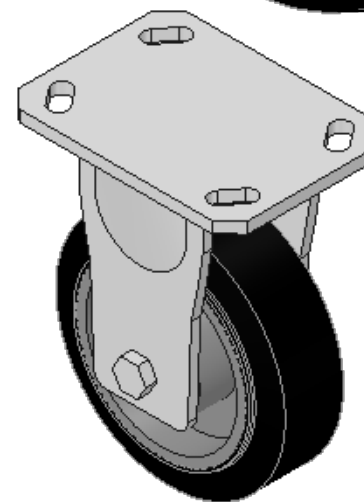
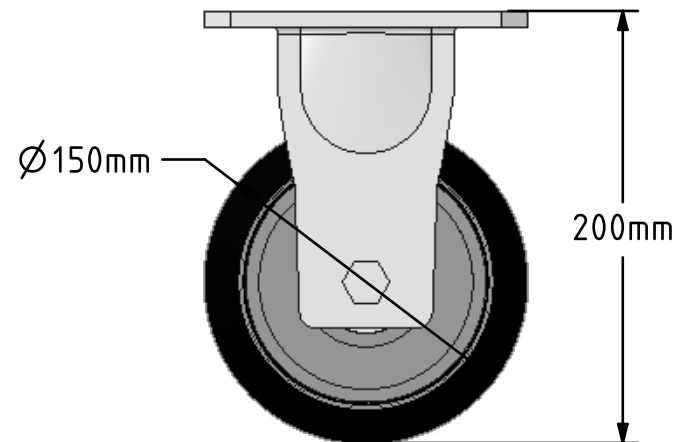
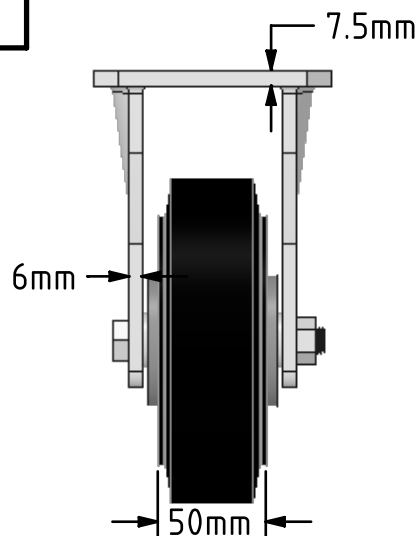
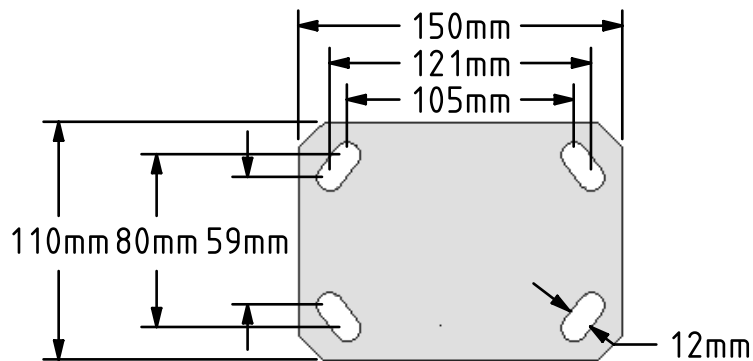


DRAWING DISCLAIMER
 COPYRIGHT OF THIS DRAWING IS RESERVED BY BIL GROUP LTD. IT IS ISSUED ON CONDITION THAT IT IS NOT REPRODUCED, COPIED, OR DISCLOSED TO A THIRD PARTY EITHER WHOLLY OR IN PART WITHOUT THE CONSENT IN WRITING OF BIL GROUP LTD.




Description:
 BZKF150CUBJ

Fabricated fixed castor with top plate fixing fitted with a black 65 shore A elastic rubber tyre on a cast iron centred wheel with ball bearings. Wheel diameter 150mm, tread width 50mm, overall height 200mm, top plate 150mm x 110mm, hole centres 105mm x 80mm or 121mm x 59mm. Load capacity 400kg at 4kph

- At 6 kph speed, the load of each wheel is advised to be 80% of the load at 4kph
- At 10 kph speed, the load of each wheel is advised to be 55% of the load at 4 kph.
- At 16 kph speed, the load of each wheel is advised to be 45% of the load at 4kph.
- At 20 kph speed, the load of each wheel is advised to be 35% of the load at 4 kph.
- No data for elastic rubber wheel over 20 kph.



	NAME	DATE	 BIL Group Ltd, Porte Marsh Road, Calne Wiltshire, SN11 9BW, United Kingdom Tel +44 (0)1249 822 222 Fax: +44 (0)1249 822 300 www.bilgroup.co.uk		
DRAWN	Matt	12/07/18			
APPROVED BY	Tim W	12/07/18			
SCALE	2:7	12/07/18			
WEIGHT	4.011kg	12/07/18	TITLE		
UNLESS OTHERWISE SPECIFIED DIMENSIONS ARE IN MILLIMETRES Unspecified Tolerances Machining ± 0.25mm Fabrication ± 1mm			SIZE	DWG NO.	REV
			A4	BILCW03BZKF150CUBJ_01	1
FILE NAME			BILCW03BZKF150CUBJ_01.PDF		SHEET 1 OF 1