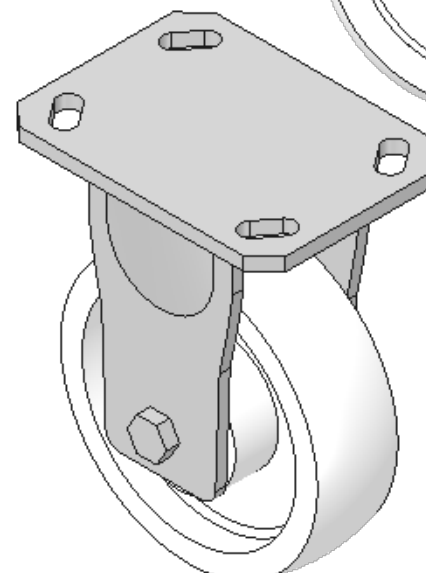
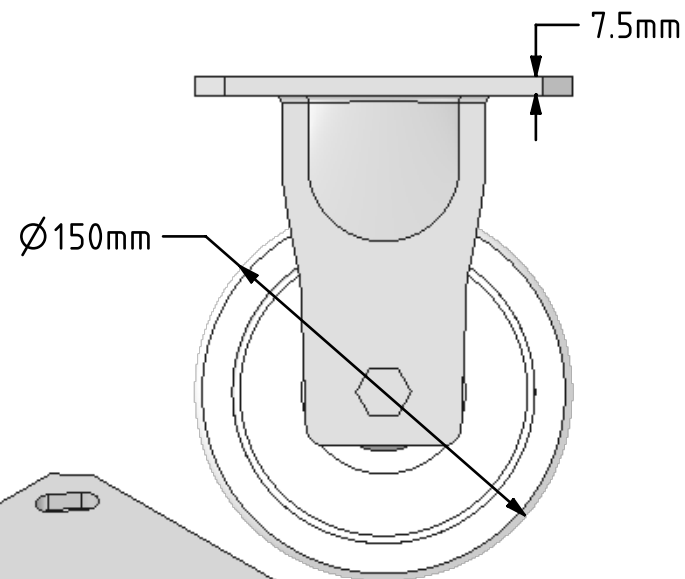
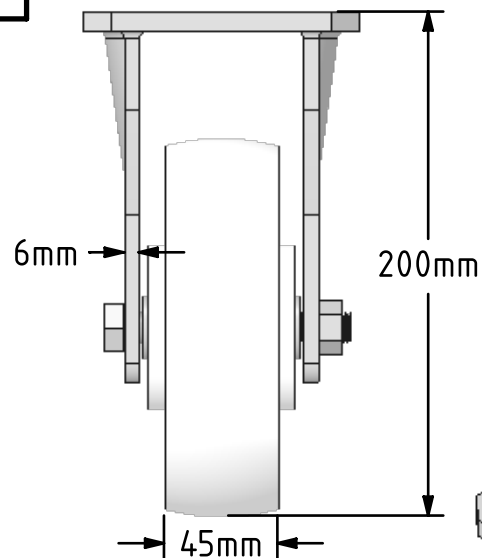
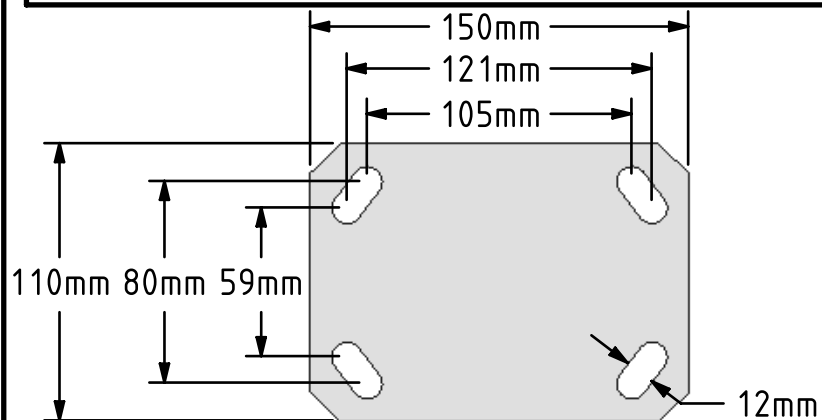


DRAWING DISCLAIMER
 COPYRIGHT OF THIS DRAWING IS RESERVED BY BIL GROUP LTD. IT IS ISSUED ON CONDITION THAT IT IS NOT REPRODUCED, COPIED, OR DISCLOSED TO A THIRD PARTY EITHER WHOLLY OR IN PART WITHOUT THE CONSENT IN WRITING OF BIL GROUP LTD.



Description:
 BZKF150NYBJ

Fabricated fixed castor with a top plate fixing fitted with a white nylon wheel with ball bearings. Wheel diameter 150mm, tread width 45mm, overall height 200mm, top plate 150 x 110mm, hole centres 105mm x 80mm or 121mm x 59mm. Load capacity 1000kg.



	NAME	DATE
DRAWN	Matt	12/07/18
APPROVED BY	Tim W	12/07/18
SCALE	1:3	12/07/18
WEIGHT	2.547kg	12/07/18

 BIL Group Ltd, Porte Marsh Road, Calne
 Wiltshire, SN11 9BW, United Kingdom
 Tel +44 (0)1249 822 222 Fax: +44 (0)1249 822 300
 www.bilgroup.co.uk

UNLESS OTHERWISE SPECIFIED DIMENSIONS ARE IN MILLIMETRES
 Unspecified Tolerances
 Machining ± 0.25mm
 Fabrication ± 1mm

TITLE		REV
BZKF150NYBJ		1
SIZE	DWG NO.	
A4	BILCW03BZKF150NYBJ_01	
FILE NAME	SHEET 1 OF 1	
BILCW03BZKF150NYBJ_01.PDF		