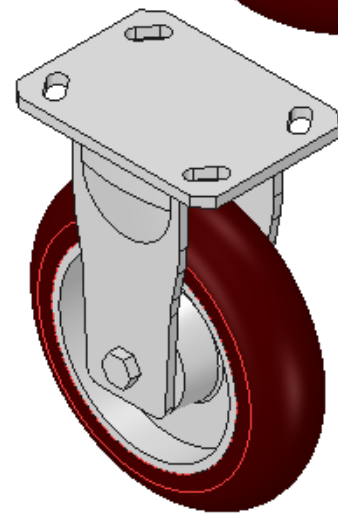
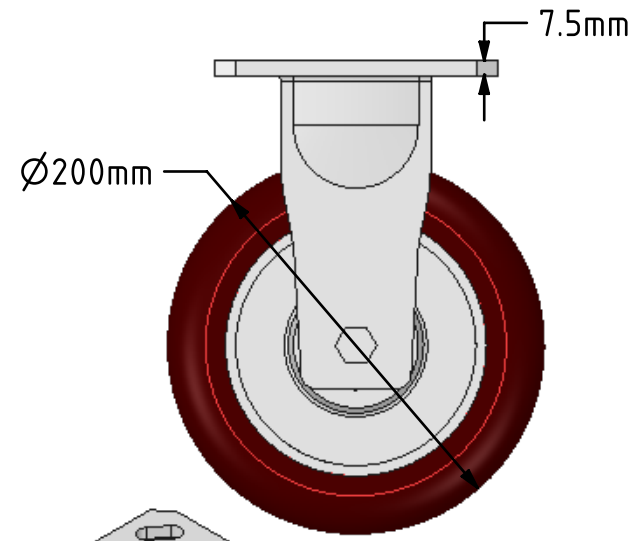
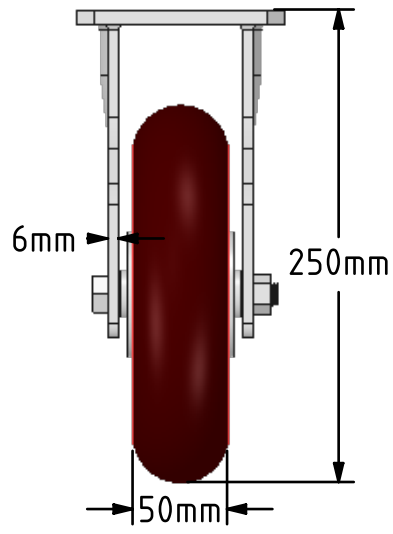
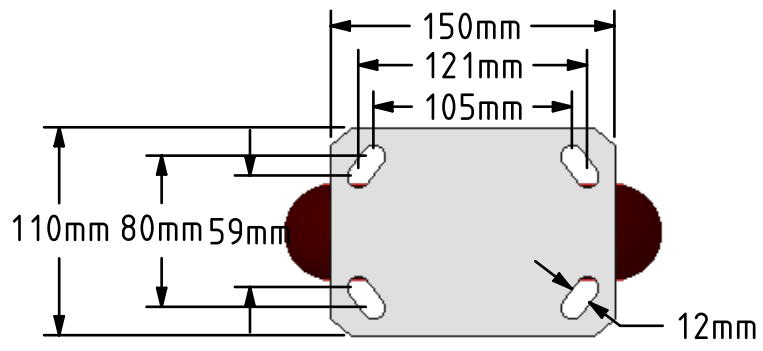
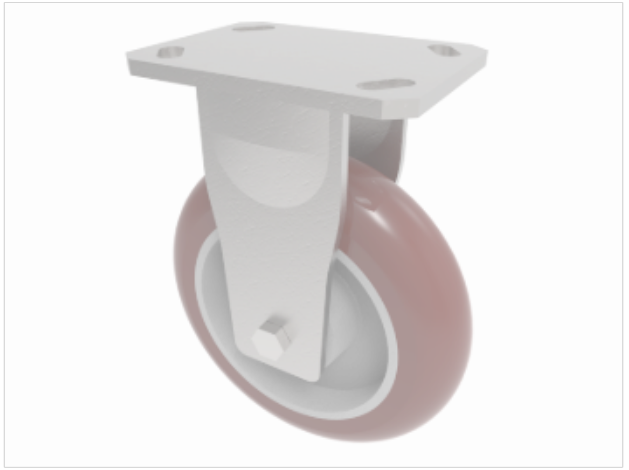



DRAWING DISCLAIMER
 COPYRIGHT OF THIS DRAWING IS RESERVED BY BIL GROUP LTD. IT IS ISSUED ON CONDITION THAT IT IS NOT REPRODUCED, COPIED, OR DISCLOSED TO A THIRD PARTY EITHER WHOLLY OR IN PART WITHOUT THE CONSENT IN WRITING OF BIL GROUP LTD.



Description:
 BZKF200RPTABJ
 Fabricated fixed castor with a top plate fixing fitted with a ergonomic polyurethane wheel on an aluminium centre with ball bearings. Wheel diameter 200mm, tread width 50mm, overall height 250mm, top plate 150mm x 110mm, hole centres 105mm x 80mm or 121mm x 59mm. Load capacity 775kg



	NAME	DATE	 BIL Group Ltd, Porte Marsh Road, Calne Wiltshire, SN11 9BW, United Kingdom Tel +44 (0)1249 822 222 Fax: +44 (0)1249 822 300 www.bilgroup.co.uk	
DRAWN	Matt	16/05/18	TITLE BZKF200RPTABJ	
APPROVED BY	Chris	16/05/18		
SCALE	1:4	16/05/18		
WEIGHT	4.015kg	16/05/18		
UNLESS OTHERWISE SPECIFIED DIMENSIONS ARE IN MILLIMETRES Unspecified Tolerances Machining ± 0.25mm Fabrication ± 1mm			SIZE A4	DWG NO. BILCW03BZKF200RPTABJ_01
			REV 1	FILE NAME BILCW03BZKF200RPTABJ_01.PDF
			SHEET 1 OF 1	