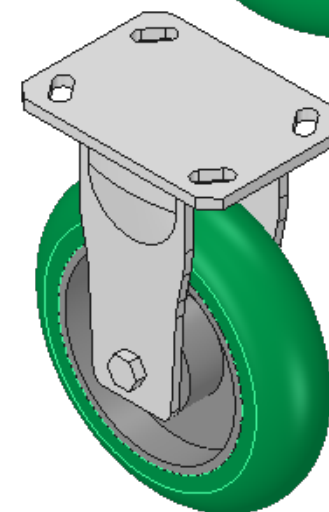
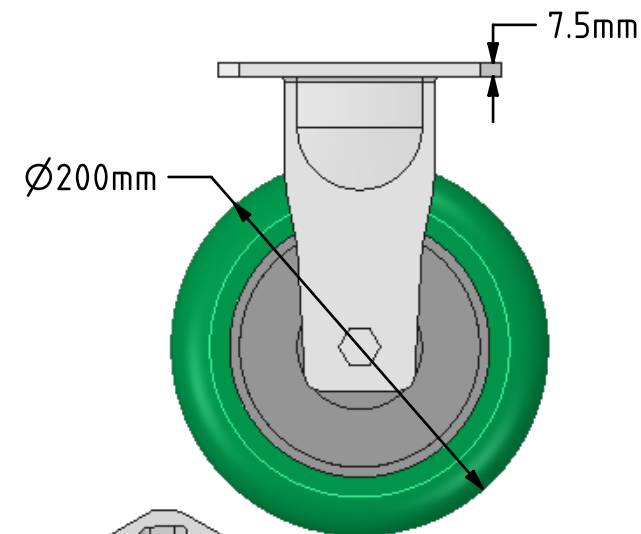
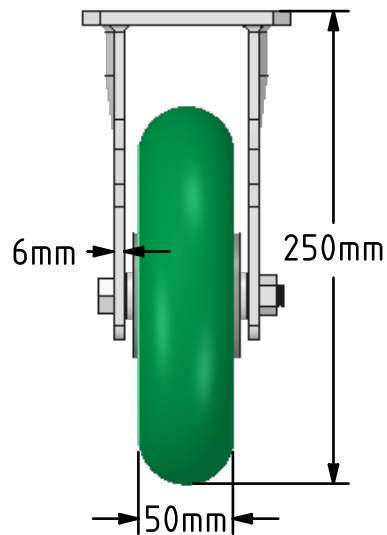
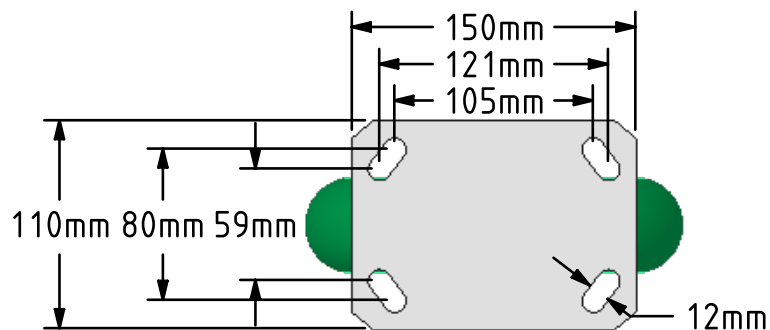



DRAWING DISCLAIMER
 COPYRIGHT OF THIS DRAWING IS RESERVED BY BIL GROUP LTD. IT IS ISSUED ON CONDITION THAT IT IS NOT REPRODUCED, COPIED, OR DISCLOSED TO A THIRD PARTY EITHER WHOLLY OR IN PART WITHOUT THE CONSENT IN WRITING OF BIL GROUP LTD.



Description:
 BZKF200SRPTABJ

Fabricated fixed castor with a top plate fixing fitted with a 85 Shore A ergonomic green polyurethane wheel on an aluminium centre with ball bearings. Wheel diameter 200mm, tread width 50mm, overall height 250mm, top plate 150mm x 110mm, hole centres 105mm x 80mm or 121mm x 59mm. Load capacity 775kg



	NAME	DATE	BIL Group Ltd, Porte Marsh Road, Calne Wiltshire, SN11 9BW, United Kingdom Tel +44 (0)1249 822 222 Fax: +44 (0)1249 822 300 www.bilgroup.co.uk	
DRAWN	Matt	17/05/18		
APPROVED BY	Chris	17/05/18		
SCALE	1:4	17/05/18		
WEIGHT	3.985kg	17/05/18		
UNLESS OTHERWISE SPECIFIED DIMENSIONS ARE IN MILLIMETRES			SIZE	DWG NO.
Unspecified Tolerances Machining ± 0.25mm Fabrication ± 1mm			A4	BILCW03BZKF200SRPTABJ_01
			TITLE	REV
			BZKF200SRPTABJ	
			FILE NAME	SHEET 1 OF 1
			BILCW03BZKF200SRPTABJ_01.PDF	