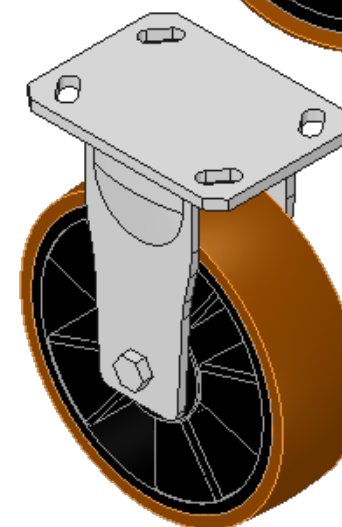
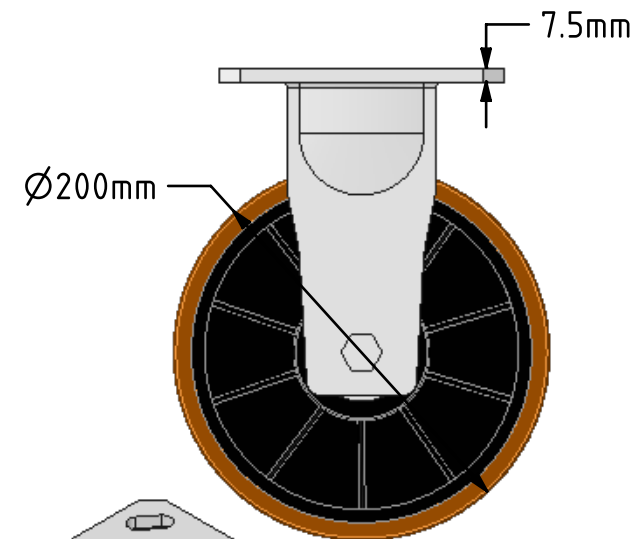
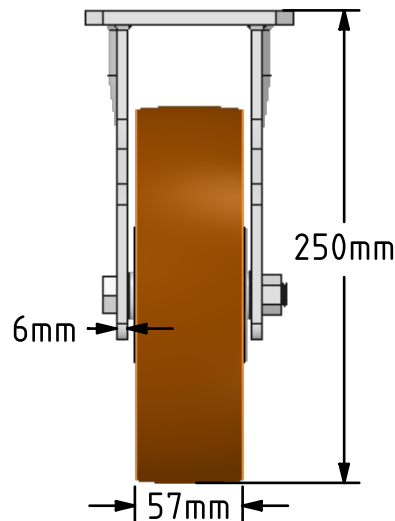
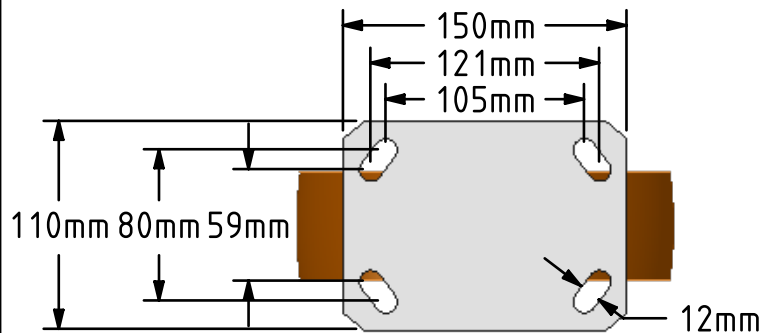


DRAWING DISCLAIMER
 COPYRIGHT OF THIS DRAWING IS RESERVED BY BIL GROUP LTD. IT IS ISSUED ON CONDITION THAT IT IS NOT REPRODUCED, COPIED, OR DISCLOSED TO A THIRD PARTY EITHER WHOLLY OR IN PART WITHOUT THE CONSENT IN WRITING OF BIL GROUP LTD.



Description:
 BZKF200XPBJ

Fabricated fixed castor with a top plate fixing fitted with a brown polyurethane tyred nylon centred wheel with ball bearings, Wheel diameter 200mm, tread width 57mm, overall height 250mm, top plate 150mm x 110mm, hole centres 105mm x 80mm or 121mm x 59mm. Load capacity 800kg.



	NAME	DATE
DRAWN	Matt	16/05/18
APPROVED BY	Chris	16/05/18
SCALE	1:4	16/05/18
WEIGHT	3.496kg	16/05/18

UNLESS OTHERWISE SPECIFIED DIMENSIONS ARE IN MILLIMETRES

Unspecified Tolerances
 Machining ± 0.25mm
 Fabrication ± 1mm



BIL Group Ltd, Porte Marsh Road, Calne
 Wiltshire, SN11 9BW, United Kingdom
 Tel +44 (0)1249 822 222 Fax: +44 (0)1249 822 300
 www.bilgroup.co.uk

TITLE

BZKF200XPBJ

SIZE	DWG NO.	REV
A4	BILCW03BZKF200XPBJ_01	1

FILE NAME BILCW03BZKF200XPBJ_01.PDF SHEET 1 OF 1