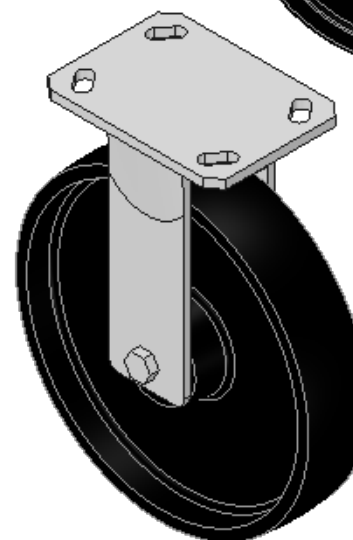
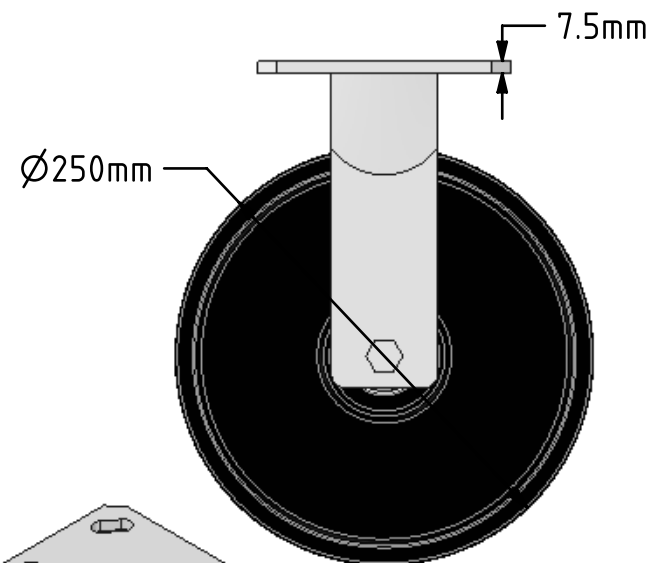
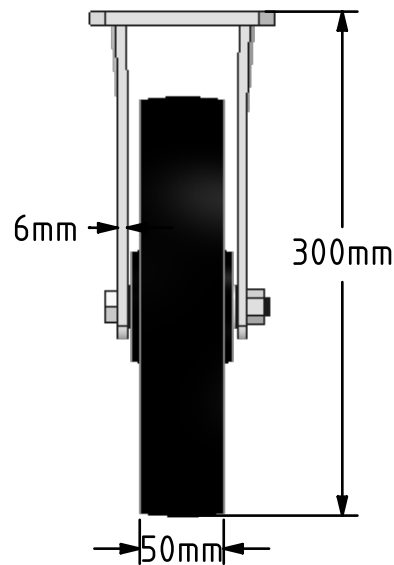
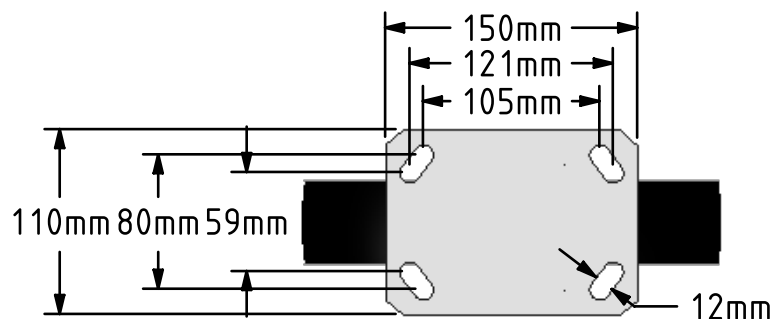


DRAWING DISCLAIMER
 COPYRIGHT OF THIS DRAWING IS RESERVED BY BIL GROUP LTD. IT IS ISSUED ON CONDITION THAT IT IS NOT REPRODUCED, COPIED, OR DISCLOSED TO A THIRD PARTY EITHER WHOLLY OR IN PART WITHOUT THE CONSENT IN WRITING OF BIL GROUP LTD.



Description:
 BZKF250CIBJ

Fabricated fixed castor with a top plate fixing fitted with a cast iron wheel with ball bearings. Wheel diameter 250mm, tread width 50mm, overall height 300mm, top plate 150mm x 120mm, hole centres 105mm x 80mm or 121mm x 59mm. Load capacity 1250kg



	NAME	DATE
DRAWN	Matt	10/07/18
APPROVED BY	Tim W	10/07/18
SCALE	2:9	10/07/18
WEIGHT	8.39kg	10/07/18

UNLESS OTHERWISE SPECIFIED DIMENSIONS ARE IN MILLIMETRES

Unspecified Tolerances
 Machining ± 0.25mm
 Fabrication ± 1mm



BIL Group Ltd, Porte Marsh Road, Calne
 Wiltshire, SN11 9BW, United Kingdom
 Tel +44 (0)1249 822 222 Fax: +44 (0)1249 822 300
 www.bilgroup.co.uk

TITLE

BZKF250CIBJ

SIZE A4
 DWG NO.

BILCW03BZKF250CIBJ__01

REV 1

FILE NAME BILCW03BZKF250CIBJ__01.PDF

SHEET 1 OF 1