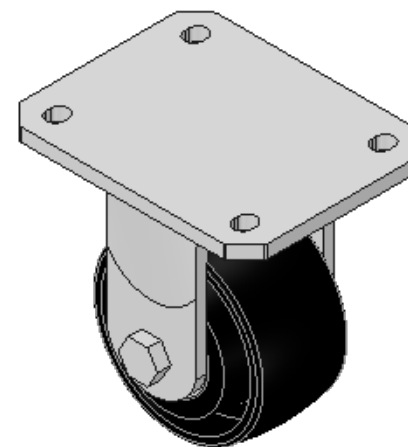
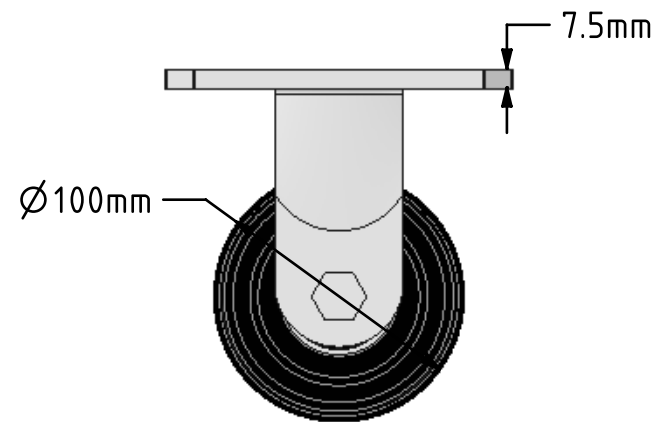
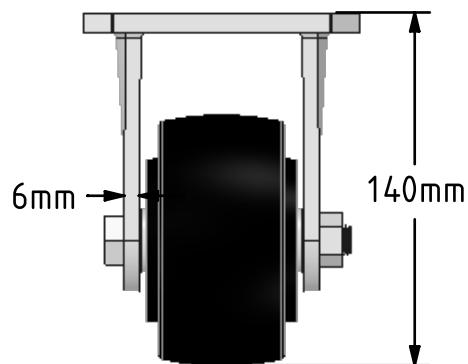
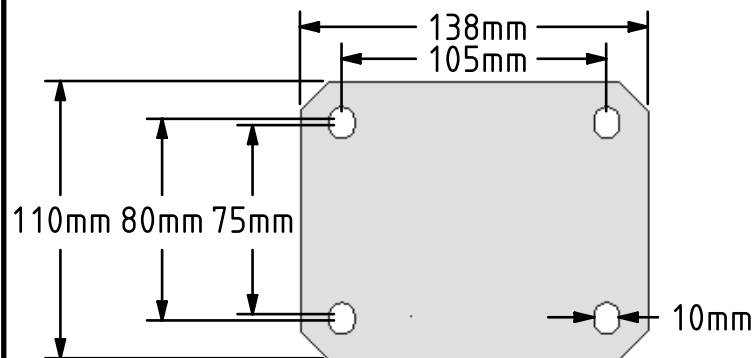


DRAWING DISCLAIMER  
 COPYRIGHT OF THIS DRAWING IS RESERVED BY BIL GROUP LTD. IT IS ISSUED ON CONDITION THAT IT IS NOT REPRODUCED, COPIED, OR DISCLOSED TO A THIRD PARTY EITHER WHOLLY OR IN PART WITHOUT THE CONSENT IN WRITING OF BIL GROUP LTD.



Description:  
 BZKFL100CIBJ

Fabricated fixed castor with a top plate fixing fitted with a cast iron wheel with ball bearings. Wheel diameter 100mm, tread width 50mm, overall height 140mm, top plate 138mm x 110mm, hole centres 105mm x 80/75mm. Load capacity 400kg



	NAME	DATE
DRAWN	Matt	27/04/18
APPROVED BY	Chris	27/04/18
SCALE	1:3	27/04/18
WEIGHT	3.318kg	27/04/18

UNLESS OTHERWISE SPECIFIED DIMENSIONS ARE IN MILLIMETRES  
 Unspecified Tolerances  
 Machining ± 0.25mm  
 Fabrication ± 1mm

 BIL Group Ltd, Porte Marsh Road, Calne Wiltshire, SN11 9BW, United Kingdom  
 Tel +44 (0)1249 822 222 Fax: +44 (0)1249 822 300  
 www.bilgroup.co.uk

TITLE  
 BZKFL100CIBJ

SIZE	DWG NO.	REV
A4	BILCW03BZKFL100CIBJ_01	1
FILE NAME	BILCW03BZKFL100CIBJ_01.PDF	SHEET 1 OF 1