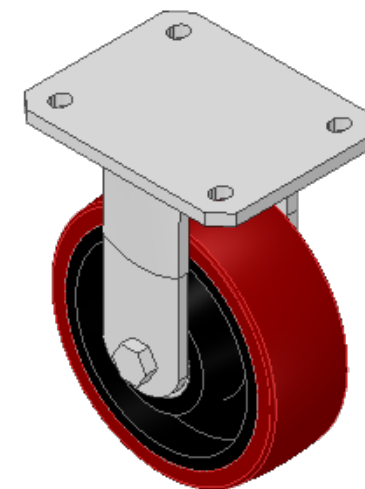
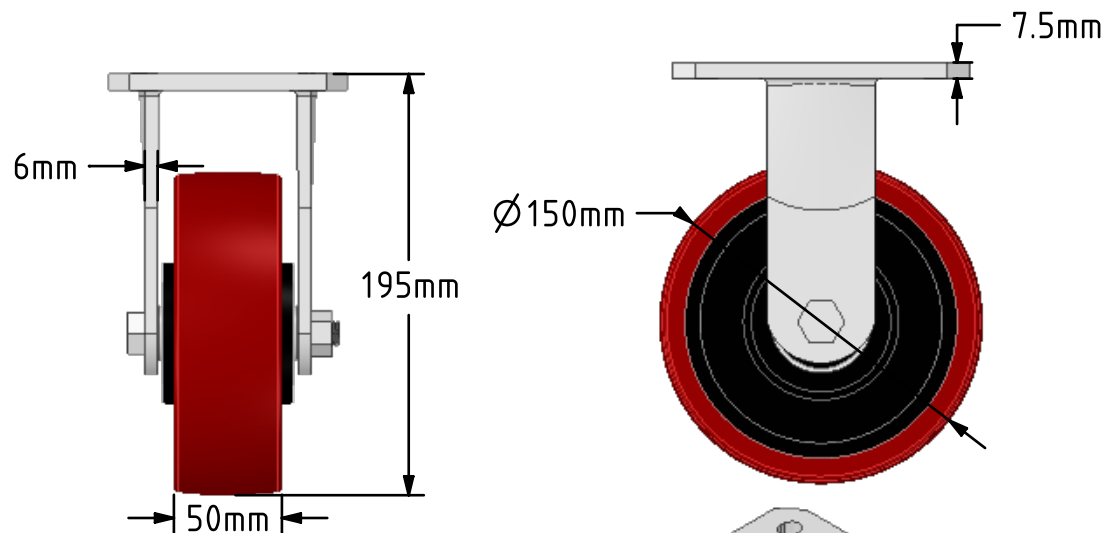
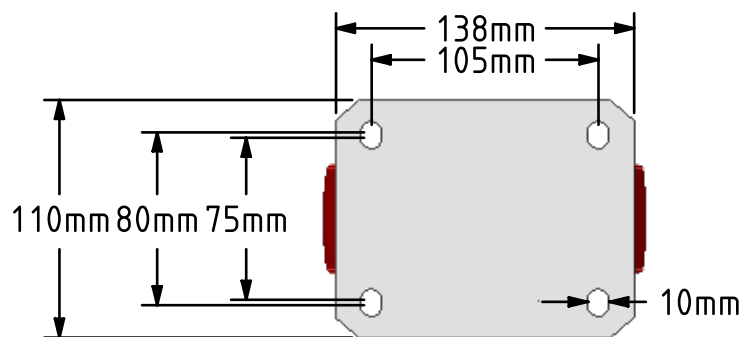
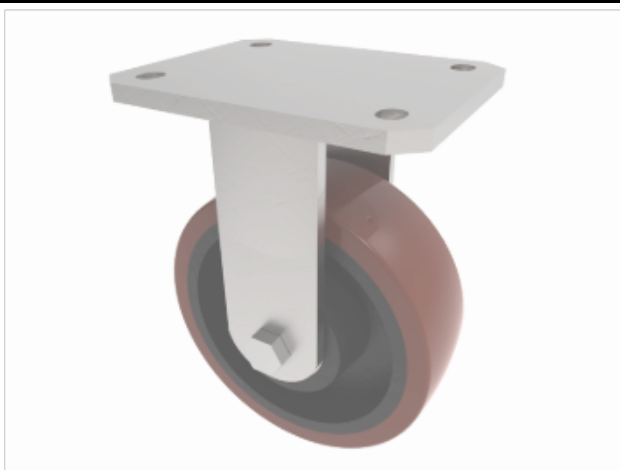


DRAWING DISCLAIMER  
 COPYRIGHT OF THIS DRAWING IS RESERVED BY BIL GROUP LTD. IT IS ISSUED ON CONDITION THAT IT IS NOT REPRODUCED, COPIED, OR DISCLOSED TO A THIRD PARTY EITHER WHOLLY OR IN PART WITHOUT THE CONSENT IN WRITING OF BIL GROUP LTD.



Description:  
 BZKFL150PTBJ

Fabricated fixed castor with a top plate fixing fitted with a polyurethane tyre cast iron centred wheel with ball bearings. Wheel diameter 150mm, tread width 50mm, overall height 195mm, top plate 138mm x 110mm, hole centres 105mm x 80/75mm. Load capacity 750kg.



	NAME	DATE
DRAWN	Matt	04/02/19
APPROVED BY	Chris	04/02/19
SCALE	2:7	04/02/19
WEIGHT	3.886kg	04/02/19

UNLESS OTHERWISE SPECIFIED DIMENSIONS ARE IN MILLIMETRES

Unspecified Tolerances  
 Machining ± 0.25mm  
 Fabrication ± 1mm



BIL Group Ltd, Porte Marsh Road, Calne  
 Wiltshire, SN11 9BW, United Kingdom  
 Tel +44 (0)1249 822 222 Fax: +44 (0)1249 822 300  
 www.bilgroup.co.uk

TITLE

BZKFL150PTBJ

SIZE	DWG NO.	REV
A4	BILCW03BZKFL150PTBJ_01	1

FILE NAME BILCW03BZKFL150PTBJ\_01.PDF SHEET 1 OF 1