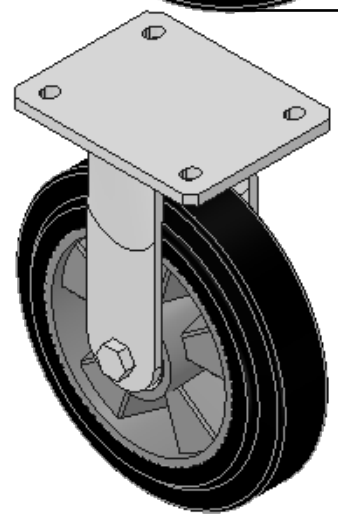
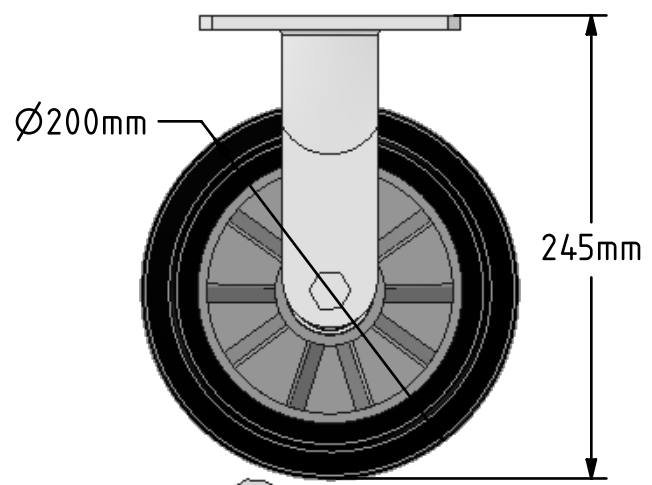
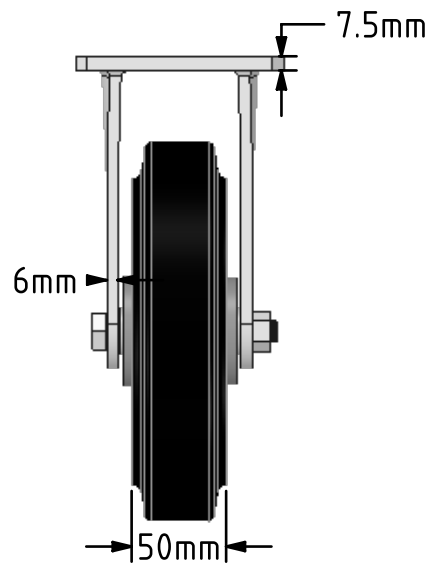
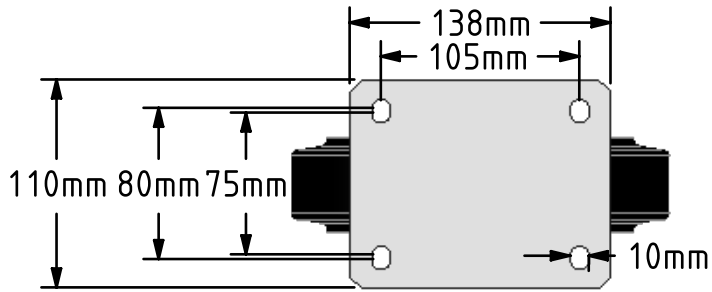



DRAWING DISCLAIMER
 COPYRIGHT OF THIS DRAWING IS RESERVED BY BIL GROUP LTD. IT IS ISSUED ON CONDITION THAT IT IS NOT REPRODUCED, COPIED, OR DISCLOSED TO A THIRD PARTY EITHER WHOLLY OR IN PART WITHOUT THE CONSENT IN WRITING OF BIL GROUP LTD.



Description:
 BZKFL200ERBJ

Fabricated fixed castor with a top plate fixing fitted with a black high elastic natural 65 shore A aluminium centred wheel with ball bearings. Wheel diameter 200mm, tread width 50mm, overall height 245mm, top plate 138mm x 110mm, hole centres 105mm x 80/75mm. Load capacity 500kg. REACH compliant also PAH-Free rubber to confirm to EU-directive 2005/69/EC



	NAME	DATE	 BIL Group Ltd, Porte Marsh Road, Calne Wiltshire, SN11 9BW, United Kingdom Tel +44 (0)1249 822 222 Fax: +44 (0)1249 822 300 www.bilgroup.co.uk
DRAWN	Matt	20/04/18	
APPROVED BY	Chris	20/04/18	
SCALE	1:4	20/04/18	
WEIGHT	3.132kg	20/04/18	
UNLESS OTHERWISE SPECIFIED DIMENSIONS ARE IN MILLIMETRES Unspecified Tolerances Machining ± 0.25mm Fabrication ± 1mm			TITLE BZKFL200ERBJ
SIZE	DWG NO.		REV
A4	BILCW03BZKFL200ERBJ_01		1
FILE NAME	BILCW03BZKFL200ERBJ_01.PDF		SHEET 1 OF 1