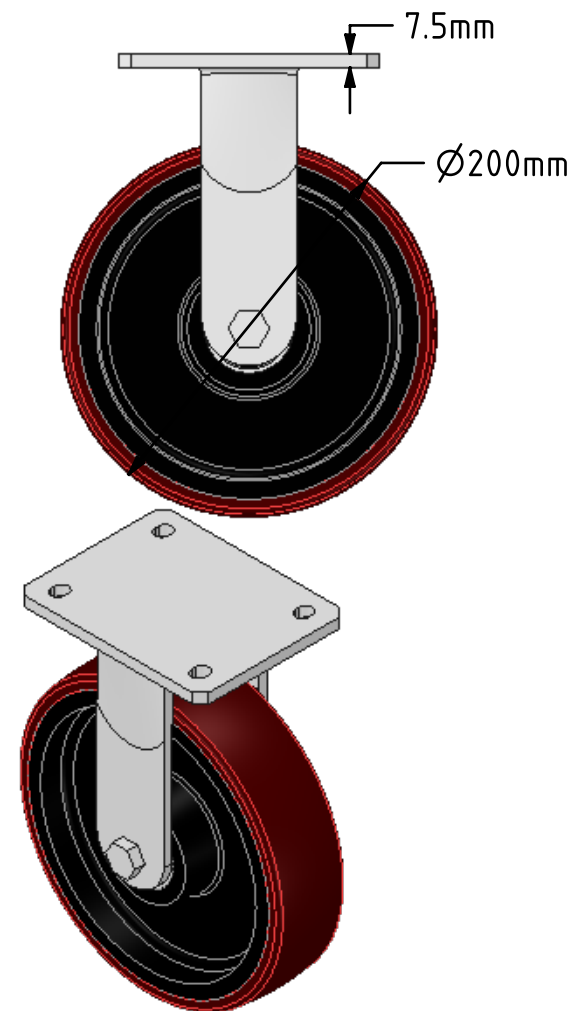
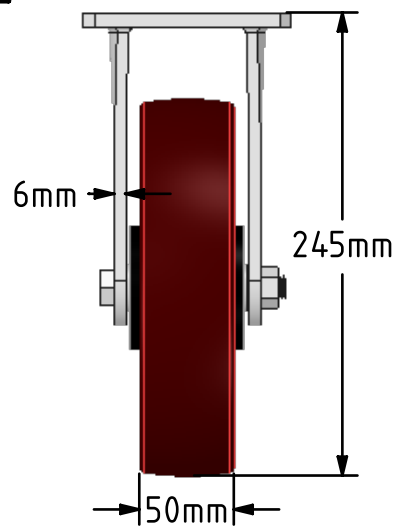
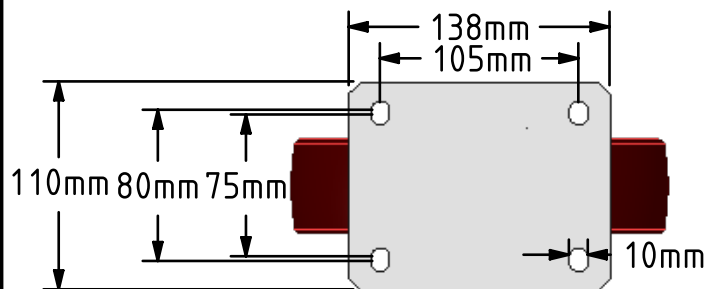
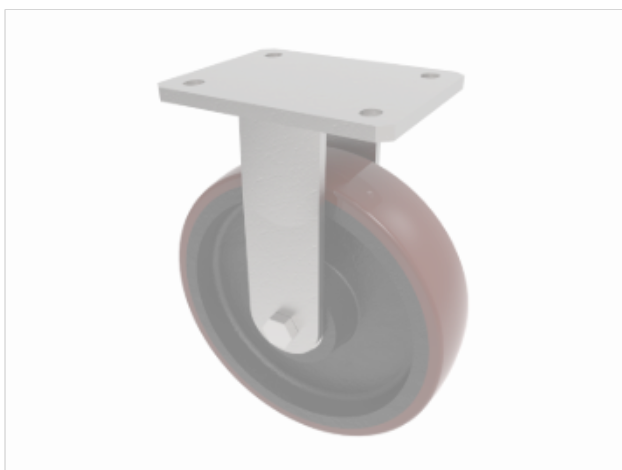


DRAWING DISCLAIMER
 COPYRIGHT OF THIS DRAWING IS RESERVED BY BIL GROUP LTD. IT IS ISSUED ON CONDITION THAT IT IS NOT REPRODUCED, COPIED, OR DISCLOSED TO A THIRD PARTY EITHER WHOLLY OR IN PART WITHOUT THE CONSENT IN WRITING OF BIL GROUP LTD.



Description:
 BZKFL200PTBJ

Fabricated fixed castor with a flat plate fixing fitted with a brown polyurethane tyre on cast iron centre wheel with ball bearings. Wheel diameter 200mm, tread width 50mm, overall height 245mm, plate size 138mm x 110mm, hole centres 105mm x 80mm/75mm. Load capacity 900kg



	NAME	DATE
DRAWN	Matt	01/12/17
APPROVED BY	Chris	01/12/17
SCALE	1:4	01/12/17
WEIGHT	5.323kg	01/12/17

UNLESS OTHERWISE SPECIFIED DIMENSIONS ARE IN MILLIMETRES

Unspecified Tolerances
 Machining $\pm 0.25\text{mm}$
 Fabrication $\pm 1\text{mm}$



BIL Group Ltd, Porte Marsh Road, Calne
 Wiltshire, SN11 9BW, United Kingdom
 Tel +44 (0)1249 822 222 Fax: +44 (0)1249 822 300
 www.bilgroup.co.uk

TITLE

BZKFL200PTBJ

SIZE DWG NO.

A4

BILCW03BZKFL200PTBJ_01

REV

1

FILE NAME BILCW03BZKFL200PTBJ_01.PDF

SHEET 1 OF 1