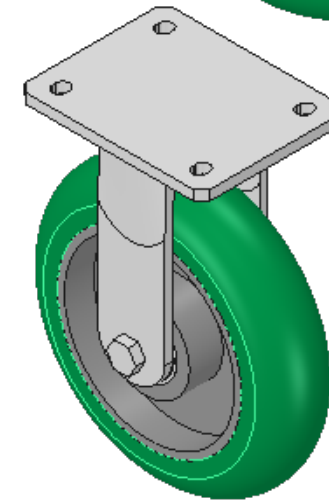
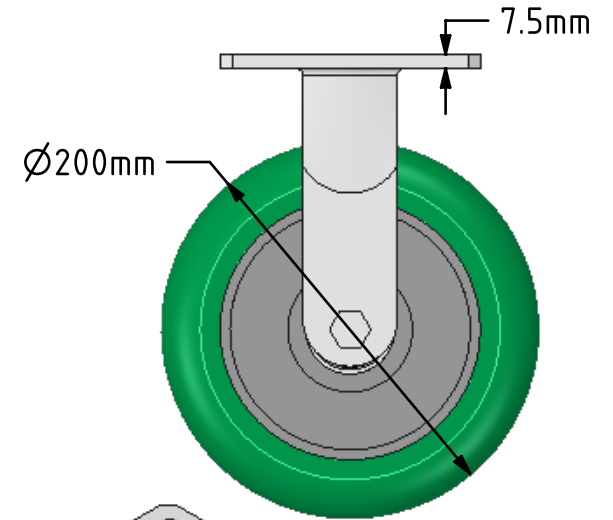
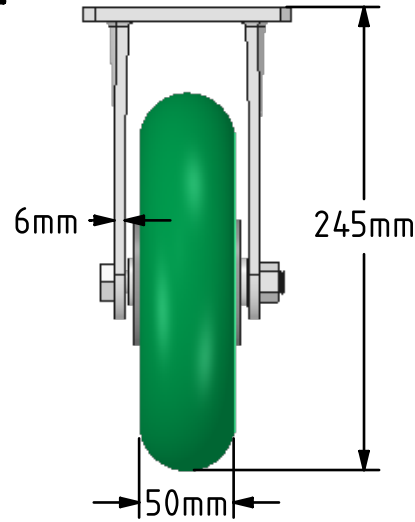
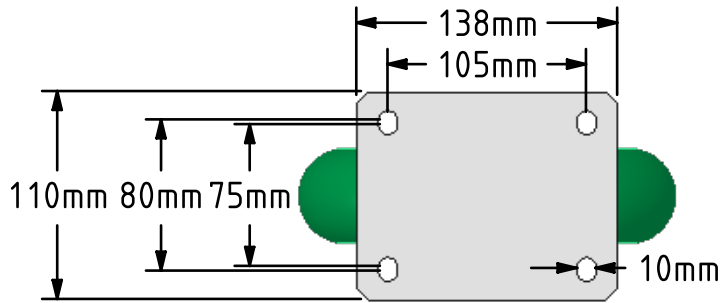


DRAWING DISCLAIMER  
 COPYRIGHT OF THIS DRAWING IS RESERVED BY BIL GROUP LTD. IT IS ISSUED ON CONDITION THAT IT IS NOT REPRODUCED, COPIED, OR DISCLOSED TO A THIRD PARTY EITHER WHOLLY OR IN PART WITHOUT THE CONSENT IN WRITING OF BIL GROUP LTD.



Description:  
 BZKFL200SRPTABJ

Fabricated fixed castor with a top plate fixing fitted with a green ergonomic 85 shore A polyurethane wheel on a aluminium centred wheel with ball bearings. Wheel diameter 200mm, tread width 50mm, overall height 245mm, top plate 138mm x 110mm, hole centres 105mm x 80/75mm. Load capacity 775kg



	NAME	DATE
DRAWN	Matt	01/05/18
APPROVED BY	Tim W	01/05/18
SCALE	1:4	01/05/18
WEIGHT	3.582kg	01/05/18

 BIL Group Ltd, Porte Marsh Road, Calne  
 Wiltshire, SN11 9BW, United Kingdom  
 Tel +44 (0)1249 822 222 Fax: +44 (0)1249 822 300  
 www.bilgroup.co.uk

TITLE		
BZKFL200SRPTABJ		
SIZE	DWG NO.	REV
A4	BILCW03BZKFL200SRPTABJ__01	1
FILE NAME BILCW03BZKFL200SRPTABJ__01.PDF SHEET 1 OF 1		

UNLESS OTHERWISE SPECIFIED DIMENSIONS ARE IN MILLIMETRES  
 Unspecified Tolerances  
 Machining ± 0.25mm  
 Fabrication ± 1mm