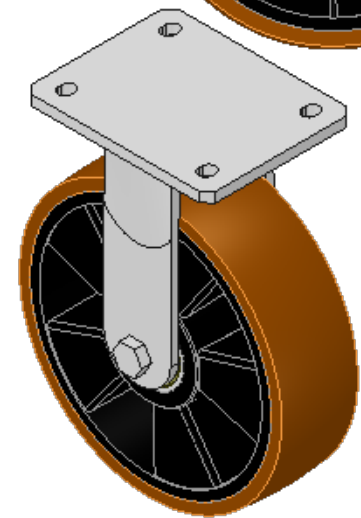
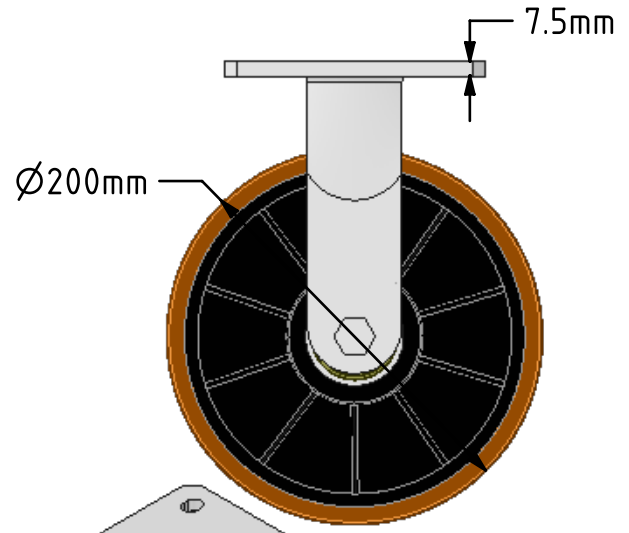
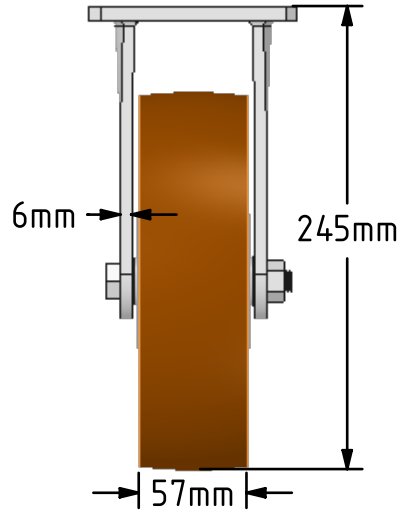
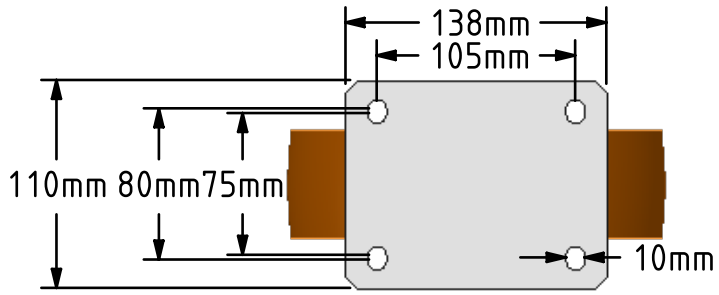
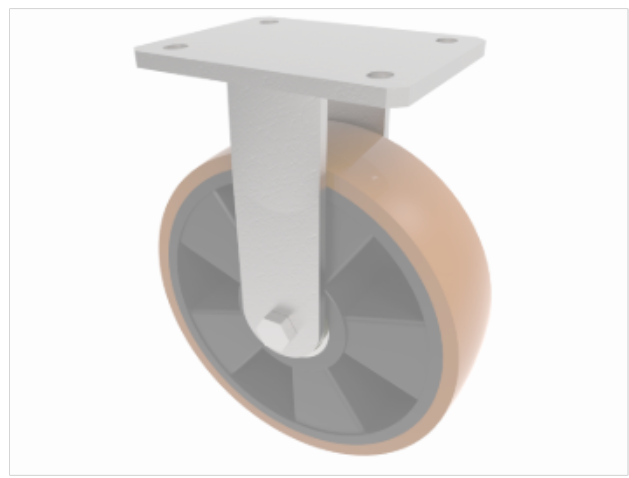


**DRAWING DISCLAIMER**  
 COPYRIGHT OF THIS DRAWING IS RESERVED BY BIL GROUP LTD. IT IS ISSUED ON CONDITION THAT IT IS NOT REPRODUCED, COPIED, OR DISCLOSED TO A THIRD PARTY EITHER WHOLLY OR IN PART WITHOUT THE CONSENT IN WRITING OF BIL GROUP LTD.



**Description:**  
 BZKFL200XPBJ  
 Fabricated fixed castor with a top plate fixing fitted with a polyurethane tyred wheel on a black nylon centred wheel with ball bearings. Wheel diameter 200mm, tread width 50mm, overall height 245mm, top plate 138mm x 110mm, hole centres 105mm x 80/75mm. Load capacity 800kg



	NAME	DATE
DRAWN	Matt	27/04/18
APPROVED BY	Chris	27/04/18
SCALE	1:4	27/04/18
WEIGHT	3.093kg	27/04/18

UNLESS OTHERWISE SPECIFIED DIMENSIONS ARE IN MILLIMETRES  
 Unspecified Tolerances  
 Machining ± 0.25mm  
 Fabrication ± 1mm

**BIL** BIL Group Ltd, Porte Marsh Road, Calne Wiltshire, SN11 9BW, United Kingdom  
 Tel +44 (0)1249 822 222 Fax: +44 (0)1249 822 300  
 www.bilgroup.co.uk

TITLE  
**BZKFL200XPBJ**

SIZE	DWG NO.	REV
A4	BILCW03BZKFL200XPBJ_01	1

FILE NAME BILCW03BZKFL200XPBJ\_01.PDF SHEET 1 OF 1