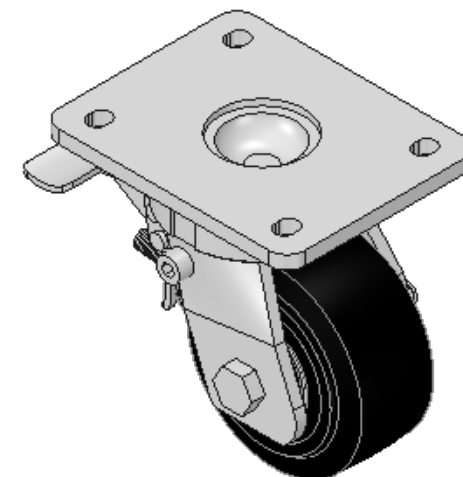
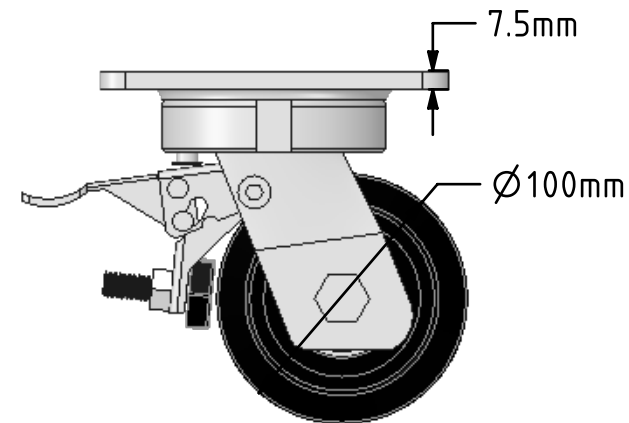
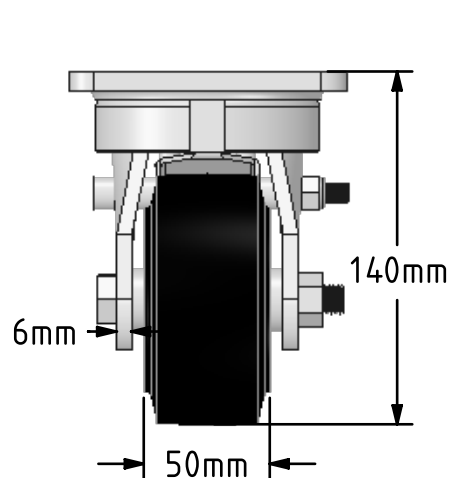
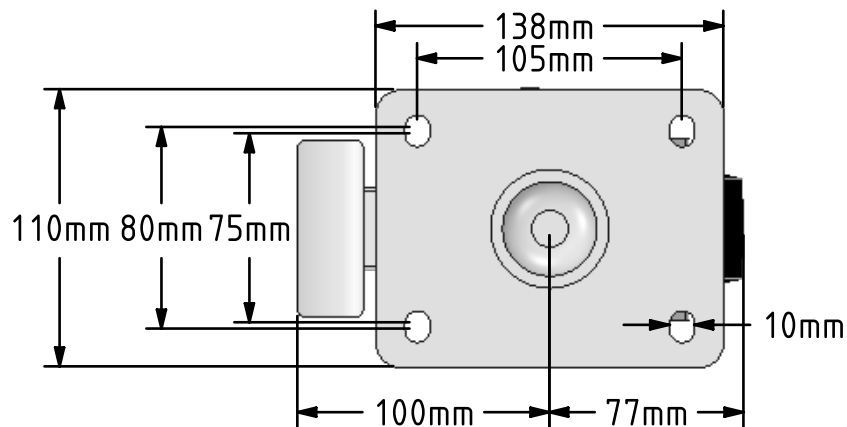


DRAWING DISCLAIMER
 COPYRIGHT OF THIS DRAWING IS RESERVED BY BIL GROUP LTD. IT IS ISSUED ON CONDITION THAT IT IS NOT REPRODUCED, COPIED, OR DISCLOSED TO A THIRD PARTY EITHER WHOLLY OR IN PART WITHOUT THE CONSENT IN WRITING OF BIL GROUP LTD.



Description:
 BZKL100CRBJSWB

Fabricated swivel castor with a top plate fixing fitted with a black elastic rubber on cast iron wheel with ball bearings and total lock brake. Wheel diameter 100mm, tread width 50mm, overall height 140mm, top plate 138mm x 110mm, hole centres 105mm x 80/75mm. Load capacity 210kg.



| | NAME | DATE |
|-------------|---------|----------|
| DRAWN | Matt | 26/04/18 |
| APPROVED BY | Tim W | 26/04/18 |
| SCALE | 1:3 | 26/04/18 |
| WEIGHT | 3.673kg | 26/04/18 |

UNLESS OTHERWISE SPECIFIED DIMENSIONS ARE IN MILLIMETRES
 Unspecified Tolerances
 Machining ± 0.25mm
 Fabrication ± 1mm

 BIL Group Ltd, Porte Marsh Road, Calne Wiltshire, SN11 9BW, United Kingdom
 Tel +44 (0)1249 822 222 Fax: +44 (0)1249 822 300
 www.bilgroup.co.uk

| TITLE | | |
|------------------------------|--------------------------|--------------|
| BZKL100CRBJSWB | | |
| SIZE | DWG NO. | REV |
| A4 | BILCW03BZKL100CRBJSWB_01 | 1 |
| FILE NAME | | SHEET 1 OF 1 |
| BILCW03BZKL100CRBJSWB_01.PDF | | |