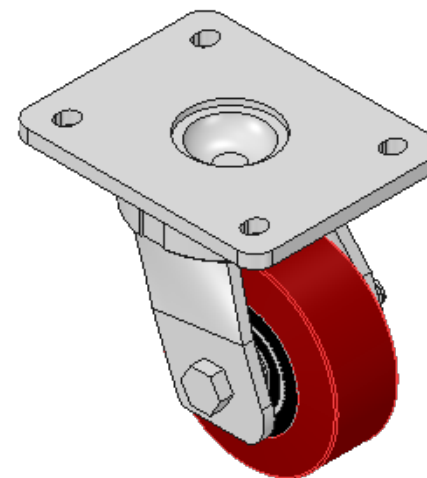
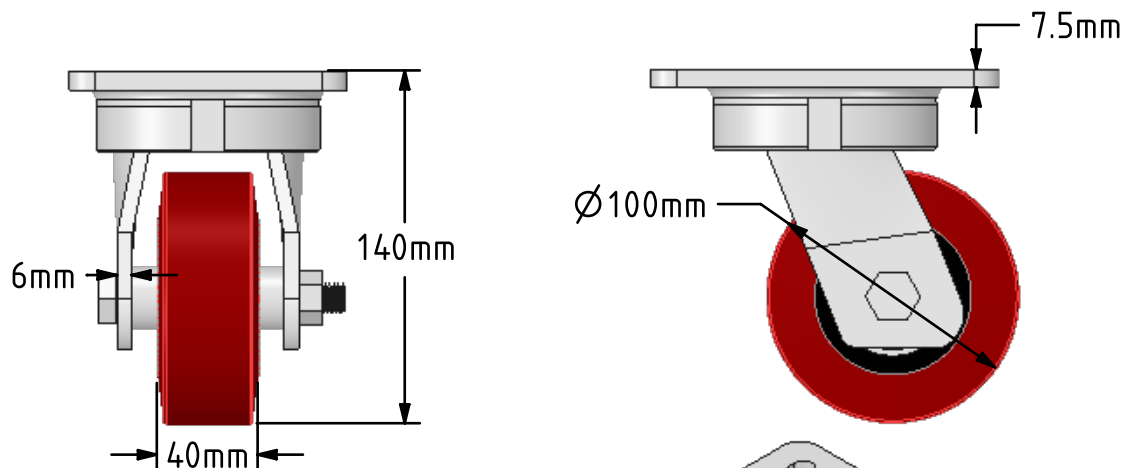
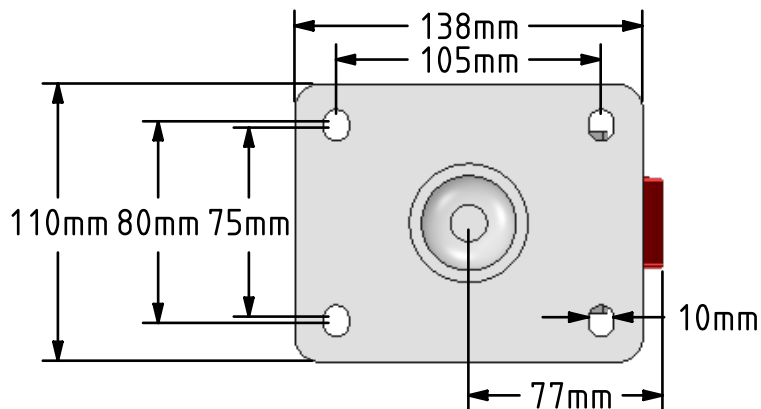



DRAWING DISCLAIMER
 COPYRIGHT OF THIS DRAWING IS RESERVED BY BIL GROUP LTD. IT IS ISSUED ON CONDITION THAT IT IS NOT REPRODUCED, COPIED, OR DISCLOSED TO A THIRD PARTY EITHER WHOLLY OR IN PART WITHOUT THE CONSENT IN WRITING OF BIL GROUP LTD.



Description:
 BZKL100PTBJ

Fabricated swivel castor with a top plate fixing fitted with a polyurethane tyre on cast iron centred wheel with ball bearings. Wheel diameter 100mm, tread with 40mm, overall height 140mm, top plate 138mm x 110mm, hole centres 105mm x 80/75mm. Load capacity 300kg.



	NAME	DATE	 BIL Group Ltd, Porte Marsh Road, Calne Wiltshire, SN11 9BW, United Kingdom Tel +44 (0)1249 822 222 Fax: +44 (0)1249 822 300 www.bilgroup.co.uk
DRAWN	Matt	02/05/18	
APPROVED BY	Chris	02/05/18	
SCALE	1:3	02/05/18	
WEIGHT	3.113kg	02/05/18	TITLE
UNLESS OTHERWISE SPECIFIED DIMENSIONS ARE IN MILLIMETRES Unspecified Tolerances Machining ± 0.25mm Fabrication ± 1mm			BZKL100PTBJ
SIZE		DWG NO.	REV
A4		BILCW03BZKL100PTBJ__02	2
FILE NAME		BILCW03BZKL100PTBJ__02.PDF	SHEET 1 OF 1