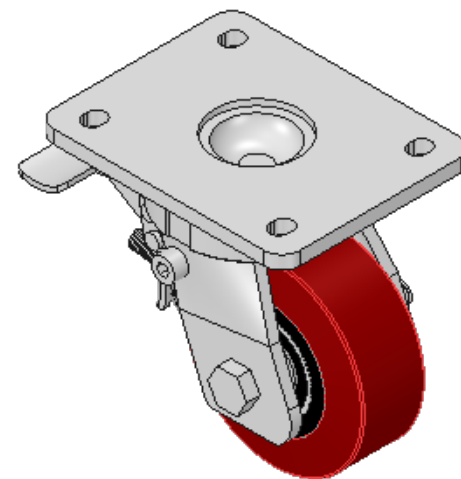
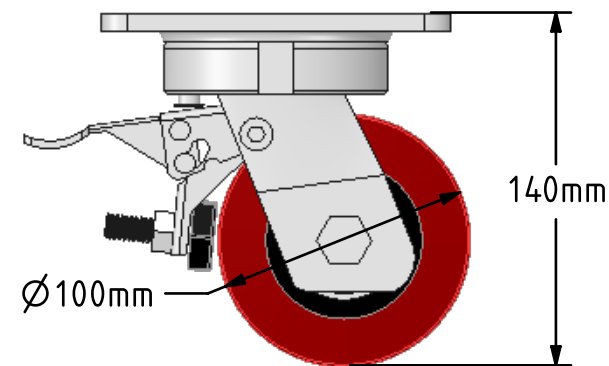
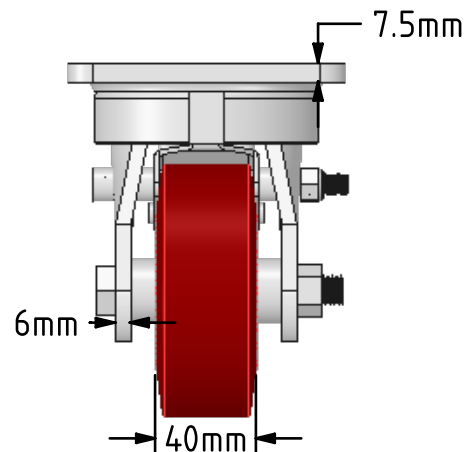
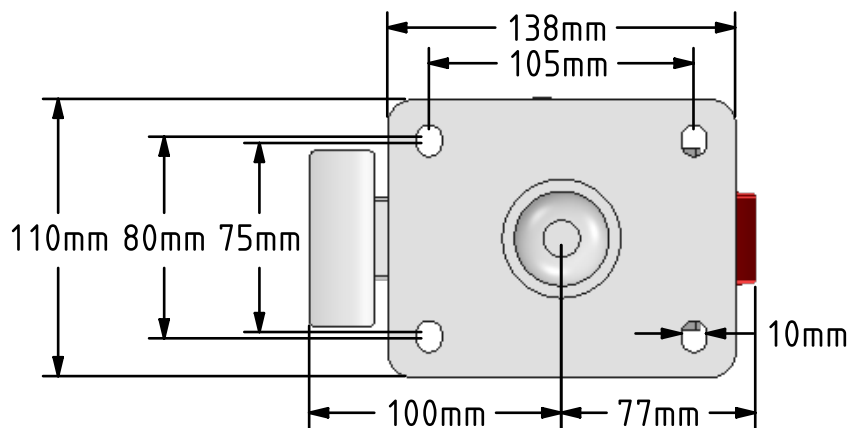


DRAWING DISCLAIMER
 COPYRIGHT OF THIS DRAWING IS RESERVED BY BIL GROUP LTD. IT IS ISSUED ON CONDITION THAT IT IS NOT REPRODUCED, COPIED, OR DISCLOSED TO A THIRD PARTY EITHER WHOLLY OR IN PART WITHOUT THE CONSENT IN WRITING OF BIL GROUP LTD.



Description:
 BZKL100PTBJSWB

Fabricated swivel castor with a stem fitting fitted with a brown polyurethane wheel with a cast iron centre with ball bearings and swivel wheel brake. Wheel diameter 100mm, tread width 40mm, overall height 140mm, top plate 138mm x 110mm, hole centres 105mm x 80/75mm. Load capacity 300kg.



| | NAME | DATE |
|-------------|---------|----------|
| DRAWN | Matt | 02/05/18 |
| APPROVED BY | Chris | 02/05/18 |
| SCALE | 1:3 | 02/05/18 |
| WEIGHT | 3.399kg | 02/05/18 |

UNLESS OTHERWISE SPECIFIED DIMENSIONS ARE IN MILLIMETRES

Unspecified Tolerances
 Machining ± 0.25mm
 Fabrication ± 1mm



BIL Group Ltd, Porte Marsh Road, Calne
 Wiltshire, SN11 9BW, United Kingdom
 Tel +44 (0)1249 822 222 Fax: +44 (0)1249 822 300
 www.bilgroup.co.uk

TITLE

BZKL100PTBJSWB

SIZE A4

DWG NO. BILCW03BZKL100PTBJSWB_01

REV 1

FILE NAME BILCW03BZKL100PTBJSWB_01.PDF SHEET 1 OF 1