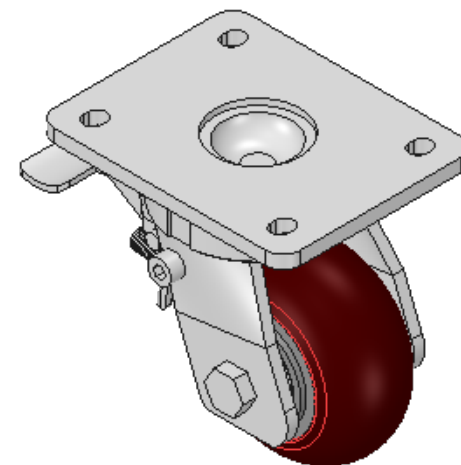
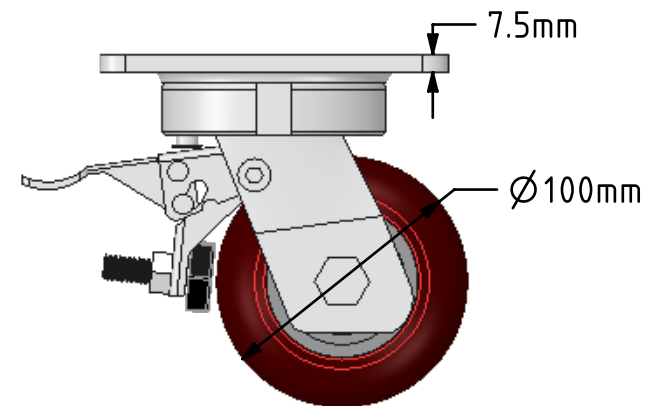
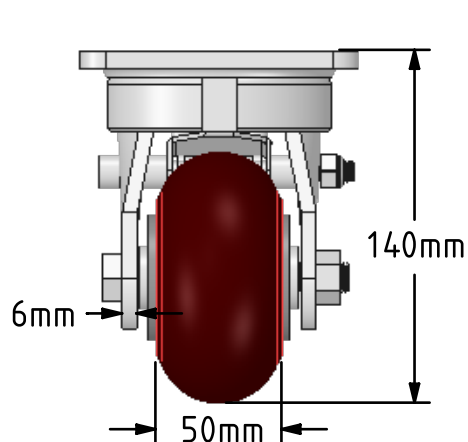
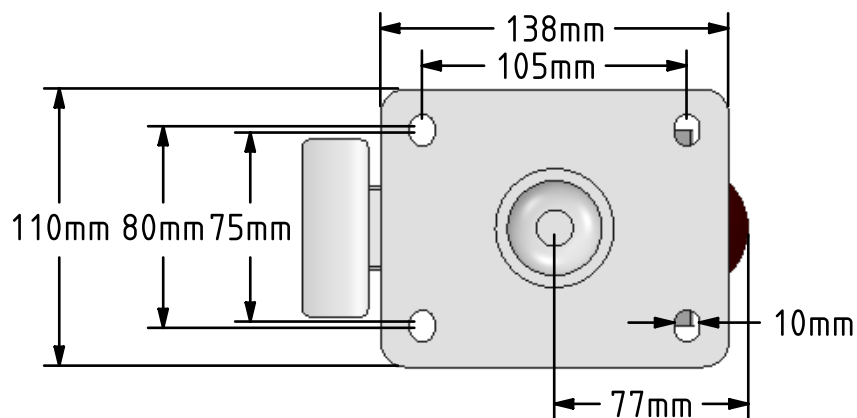


DRAWING DISCLAIMER
 COPYRIGHT OF THIS DRAWING IS RESERVED BY BIL GROUP LTD. IT IS ISSUED ON CONDITION THAT IT IS NOT REPRODUCED, COPIED, OR DISCLOSED TO A THIRD PARTY EITHER WHOLLY OR IN PART WITHOUT THE CONSENT IN WRITING OF BIL GROUP LTD.



Description:
 BZKL100RPTABJSWB

Fabricated swivel castor with a top plate fixing fitted with an brown ergonomic polyurethane wheel on an aluminium centre wheel with ball bearings and a total lock brake. Wheel diameter 100mm, tread width 50mm, overall height 140mm, top plate 138mm x 110mm, hole centres 105mm x 80/75mm. Load capacity 350kg.



	NAME	DATE
DRAWN	Matt	30/04/18
APPROVED BY	Chris	30/04/18
SCALE	1:3	30/04/18
WEIGHT	3.211kg	30/04/18

UNLESS OTHERWISE SPECIFIED DIMENSIONS ARE IN MILLIMETRES

Unspecified Tolerances
 Machining ± 0.25mm
 Fabrication ± 1mm



BIL Group Ltd, Porte Marsh Road, Calne
 Wiltshire, SN11 9BW, United Kingdom
 Tel +44 (0)1249 822 222 Fax: +44 (0)1249 822 300
 www.bilgroup.co.uk

TITLE

BZKL100RPTABJSWB

SIZE	DWG NO.	REV
A4	BILCW03BZKL100RPTABJSWB_01	1

FILE NAME BILCW03BZKL100RPTABJSWB_01.PDF SHEET 1 OF 1