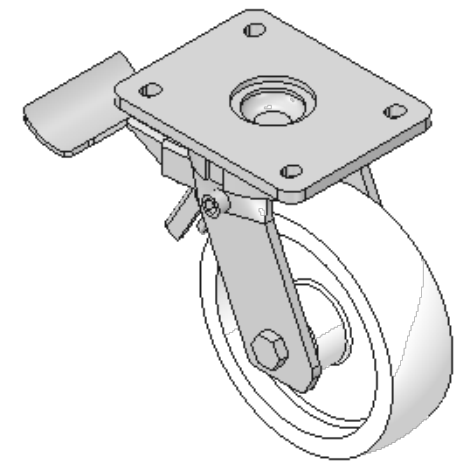
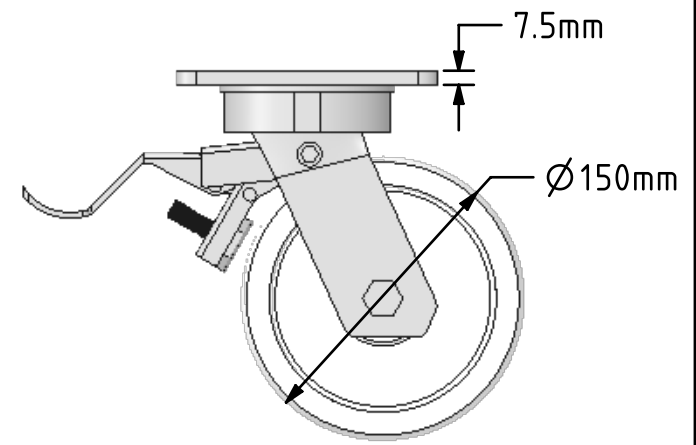
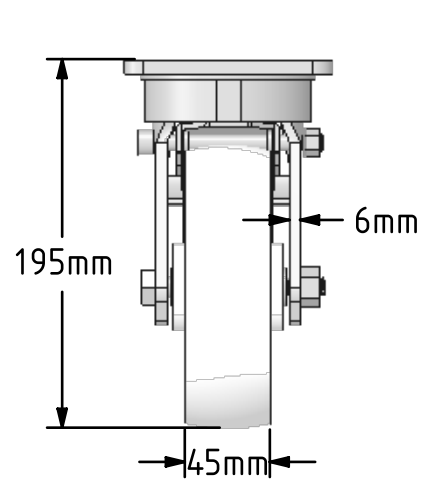
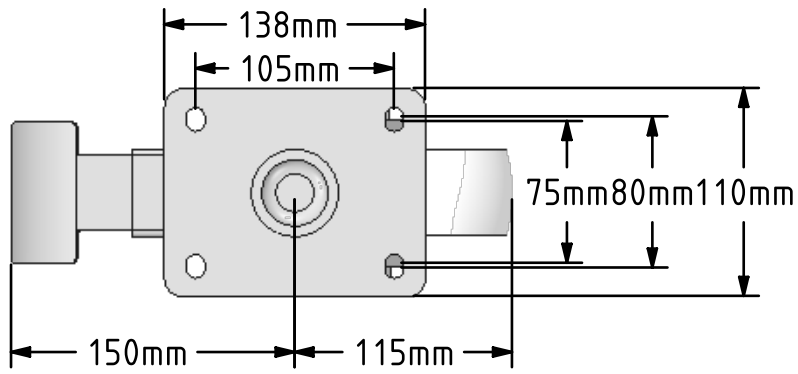


DRAWING DISCLAIMER
 COPYRIGHT OF THIS DRAWING IS RESERVED BY BIL GROUP LTD. IT IS ISSUED ON CONDITION THAT IT IS NOT REPRODUCED, COPIED, OR DISCLOSED TO A THIRD PARTY EITHER WHOLLY OR IN PART WITHOUT THE CONSENT IN WRITING OF BIL GROUP LTD.



Description:
 BZKL150NYSWB

Fabricated swivel castor with a top plate fixing fitted with a white nylon wheel with plain bearings and total lock brake. Wheel diameter 150mm, tread with 45mm, overall height 195mm, top plate 138mm x 110mm, hole centres 105mm x 80/75mm. Load capacity 800kg.



	NAME	DATE
DRAWN	Matt	16/11/16
APPROVED BY	Tim W	16/11/16
SCALE	1:4	16/11/16
WEIGHT	3.444kg	16/11/16

BIL BIL Group Ltd, Porte Marsh Road, Calne
 Wiltshire, SN11 9BW, United Kingdom
 Tel +44 (0)1249 822 222 Fax: +44 (0)1249 822 300
 www.bilgroup.eu

TITLE
BZKL150NYSWB

UNLESS OTHERWISE SPECIFIED DIMENSIONS ARE IN MILLIMETRES

Unspecified Tolerances
 Machining ± 0.25mm
 Fabrication ± 1mm

SIZE	DWG NO.	REV
A4	BILCW03BZKL150NYSWB_01	1
FILE NAME	BILCW03BZKL150NYSWB_01.PDF SHEET 1 OF 1	