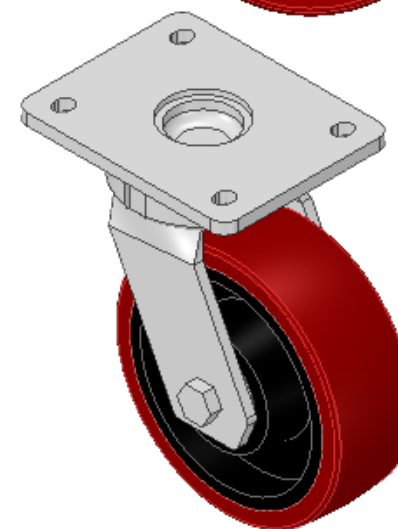
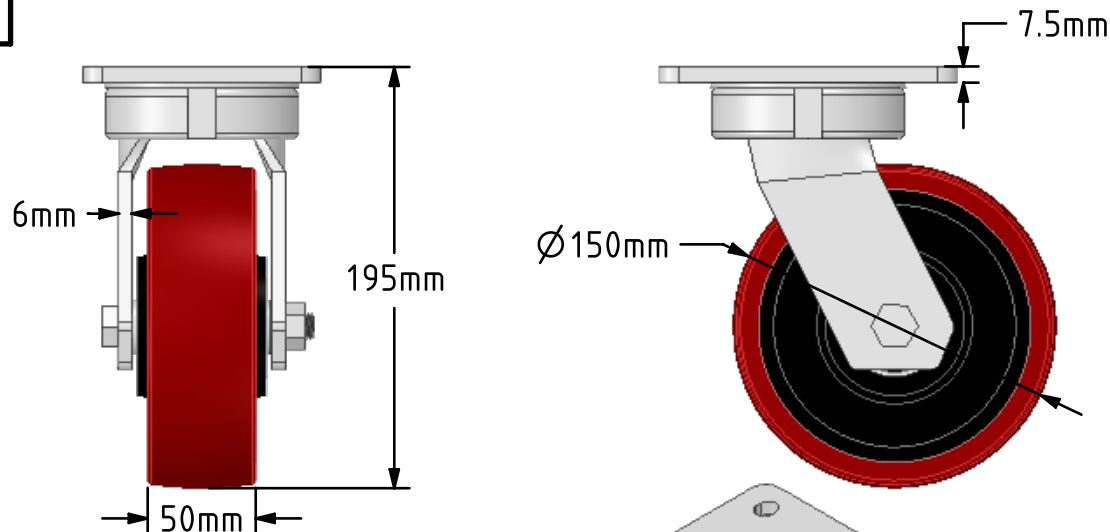
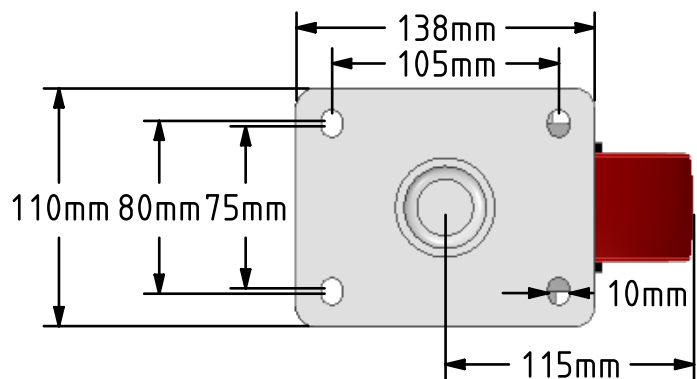


DRAWING DISCLAIMER
 COPYRIGHT OF THIS DRAWING IS RESERVED BY BIL GROUP LTD. IT IS ISSUED ON CONDITION THAT IT IS NOT REPRODUCED, COPIED, OR DISCLOSED TO A THIRD PARTY EITHER WHOLLY OR IN PART WITHOUT THE CONSENT IN WRITING OF BIL GROUP LTD.



Description:
 BZKL150PTBJ

Fabricated swivel castor with a top plate fixing fitted with a polyurethane tyre cast iron centred wheel with ball bearings. Wheel diameter 150mm, tread width 50mm, overall height 195mm, top plate 138mm x 110mm, hole centres 105mm x 80/75mm. Load capacity 750kg.



	NAME	DATE
DRAWN	Matt	04/02/19
APPROVED BY	Chris	04/02/19
SCALE	2:7	04/02/19
WEIGHT	4.907kg	04/02/19

BIL BIL Group Ltd, Porte Marsh Road, Calne
 Wiltshire, SN11 9BW, United Kingdom
 Tel +44 (0)1249 822 222 Fax: +44 (0)1249 822 300
 www.bilgroup.co.uk

TITLE		REV
BZKL150PTBJ		2
SIZE	DWG NO.	
A4	BILCW03BZKL150PTBJ_02	
FILE NAME	SHEET 1 OF 1	
	BILCW03BZKL150PTBJ_02.PDF	

UNLESS OTHERWISE SPECIFIED DIMENSIONS ARE IN MILLIMETRES

Unspecified Tolerances
 Machining ± 0.25mm
 Fabrication ± 1mm