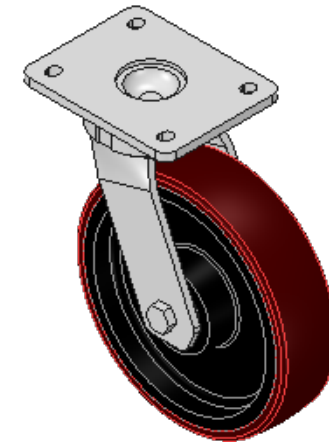
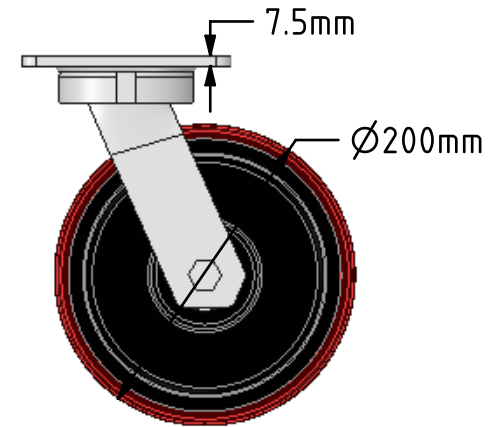
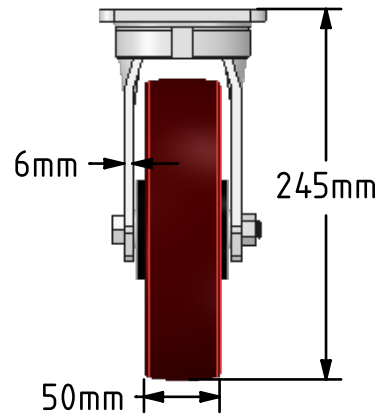
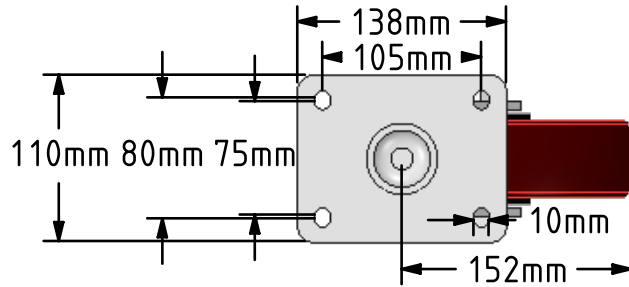


DRAWING DISCLAIMER  
 COPYRIGHT OF THIS DRAWING IS RESERVED BY BIL GROUP LTD. IT IS ISSUED ON CONDITION THAT IT IS NOT REPRODUCED, COPIED, OR DISCLOSED TO A THIRD PARTY EITHER WHOLLY OR IN PART WITHOUT THE CONSENT IN WRITING OF BIL GROUP LTD.



Description:  
 BZKL200PTBJ

Fabricated swivel castor with a flat plate fixing fitted with a brown polyurethane tyred on cast iron centre wheel with ball bearing. Wheel diameter 200mm, tread width 50mm, overall height 245mm, plate size 138mm x 110mm, hole centres 105mm x 80mm/75mm. Load capacity 900kg



	NAME	DATE
DRAWN	Matt	01/12/17
APPROVED BY	Chris	01/12/17
SCALE	1:5	01/12/17
WEIGHT	6.305kg	01/12/17

UNLESS OTHERWISE SPECIFIED DIMENSIONS ARE IN MILLIMETRES  
 Unspecified Tolerances  
 Machining ± 0.25mm  
 Fabrication ± 1mm

 BIL Group Ltd, Porte Marsh Road, Calne Wiltshire, SN11 9BW, United Kingdom  
 Tel +44 (0)1249 822 222 Fax: +44 (0)1249 822 300  
 www.bilgroup.co.uk

TITLE  
**BZKL200PTBJ**

SIZE	DWG NO.	REV
A4	BILCW03BZKL200PTBJ_01	1
FILE NAME	BILCW03BZKL200PTBJ_01.PDF SHEET 1 OF 1	