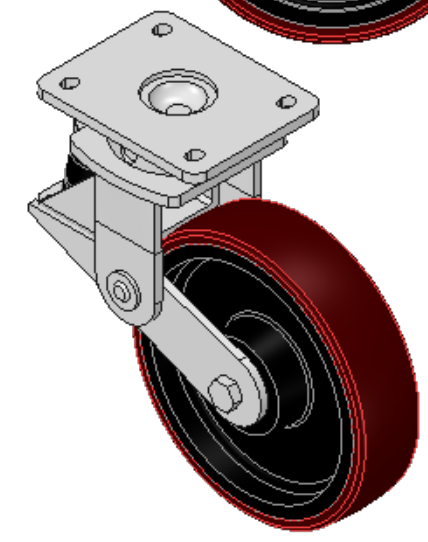
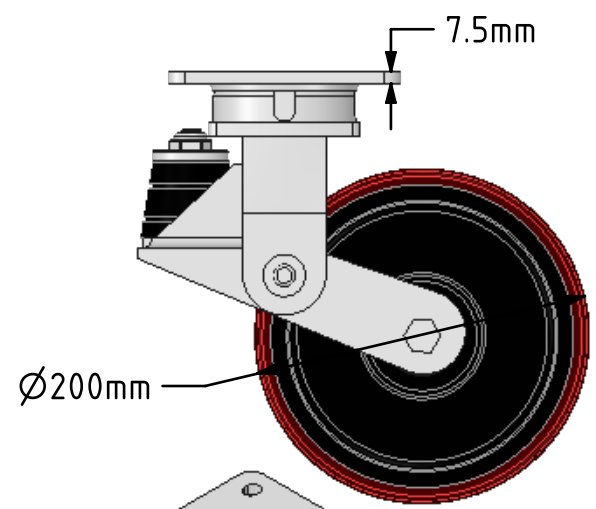
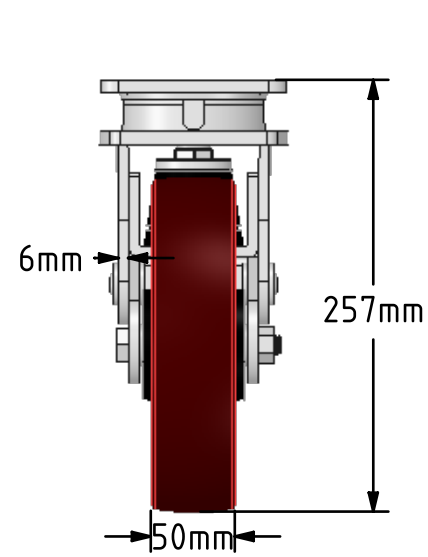
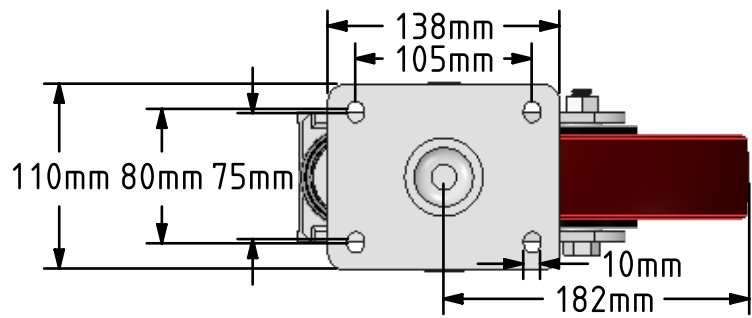



DRAWING DISCLAIMER
 COPYRIGHT OF THIS DRAWING IS RESERVED BY BIL GROUP LTD. IT IS ISSUED ON CONDITION THAT IT IS NOT REPRODUCED, COPIED, OR DISCLOSED TO A THIRD PARTY EITHER WHOLLY OR IN PART WITHOUT THE CONSENT IN WRITING OF BIL GROUP LTD.



Description:
 BZKL200PTBJSPR200
 Fabricated swivel castor with top plate fixing fitted with a 200mm x 50mm brown polyurethane tyred cast iron centred wheel with ball bearings overall height 257mm/237mm, plate size 138mm x 110mm, hole centres 105mm x 80mm. fitted with a 200kg black rubber spring max speed 4kph



	NAME	DATE	 BIL Group Ltd, Porte Marsh Road, Calne Wiltshire, SN11 9BW, United Kingdom Tel +44 (0)1249 822 222 Fax: +44 (0)1249 822 300 www.bilgroup.co.uk
DRAWN	Matt	09/05/18	
APPROVED BY	Tim W	09/05/18	
SCALE	2:9	09/05/18	
WEIGHT	8.028kg	09/05/18	
UNLESS OTHERWISE SPECIFIED DIMENSIONS ARE IN MILLIMETRES Unspecified Tolerances Machining ± 0.25mm Fabrication ± 1mm			TITLE BZKL200PTBJSPR200
SIZE A4		DWG NO. BILCW03BZKL200PTBJSPR200_01	REV 1
FILE NAME BILCW03BZKL200PTBJSPR200_01.PDF SHEET 1 OF 1			