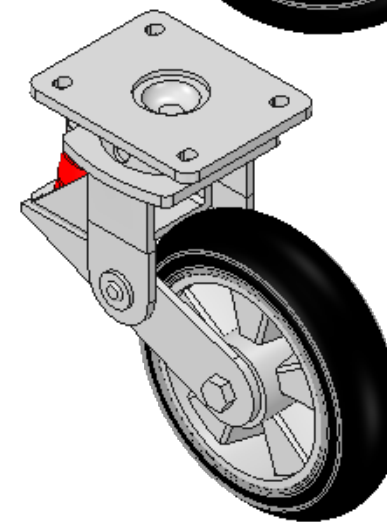
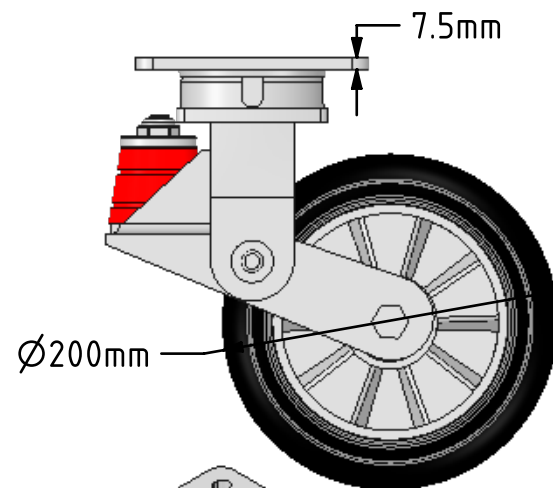
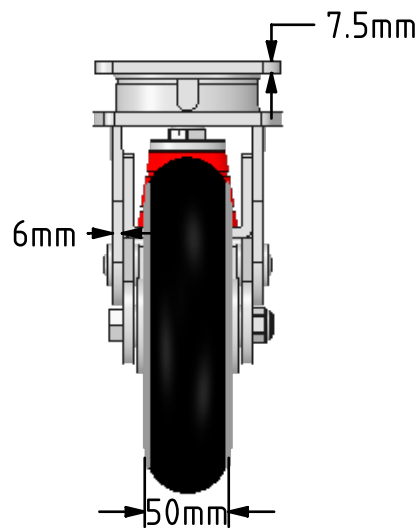
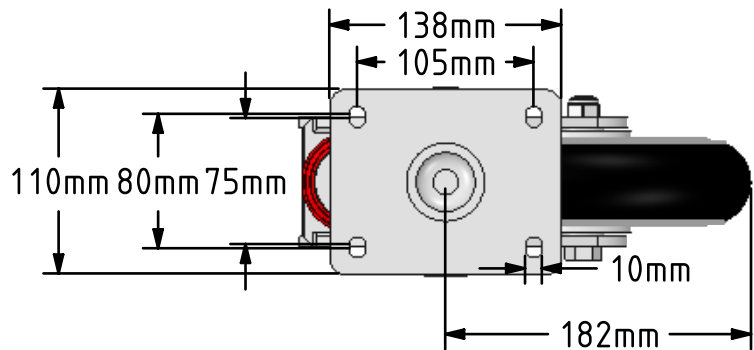


**DRAWING DISCLAIMER**  
 COPYRIGHT OF THIS DRAWING IS RESERVED BY BIL GROUP LTD. IT IS ISSUED ON CONDITION THAT IT IS NOT REPRODUCED, COPIED, OR DISCLOSED TO A THIRD PARTY EITHER WHOLLY OR IN PART WITHOUT THE CONSENT IN WRITING OF BIL GROUP LTD.



**Description:**  
 BZKL200SRERBJSPP

Fabricated swivel castor with top plate fixing fitted with a 200mm x 50mm black ergonomic high elastic rubber natural 55 shore A round profile tyred aluminium centred wheel with ball bearings overall height 237mm/257mm, plate size 138mm x 110mm, hole centres 105mm x 80mm. Fitted with a 600kg red compression polyurethane spring. However, due to the wheels capacity, the load capacity is 400kg at 4kph and 160kg at 10kph. REACH compliant also PAH-Free rubber to confirm to EU-directive 2005/69/EC.



	NAME	DATE
DRAWN	Matt	08/05/18
APPROVED BY	Tim W	08/05/18
SCALE	2:9	08/05/18
WEIGHT	5.83kg	08/05/18

UNLESS OTHERWISE SPECIFIED DIMENSIONS ARE IN MILLIMETRES  
 Unspecified Tolerances  
 Machining ± 0.25mm  
 Fabrication ± 1mm

**BIL**  
 BIL Group Ltd, Porte Marsh Road, Calne  
 Wiltshire, SN11 9BW, United Kingdom  
 Tel +44 (0)1249 822 222 Fax: +44 (0)1249 822 300  
 www.bilgroup.co.uk

TITLE		REV
BZKL200SRERBJSPP		2
SIZE	DWG NO.	
A4	BILCW03BZKL200SRERBJSPP_02	
FILE NAME BILCW03BZKL200SRERBJSPP_02.PDF		SHEET 1 OF 1