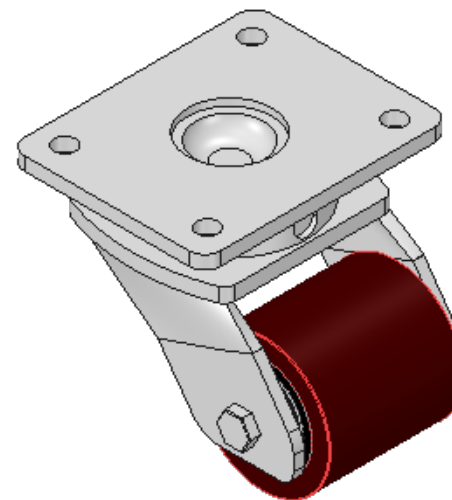
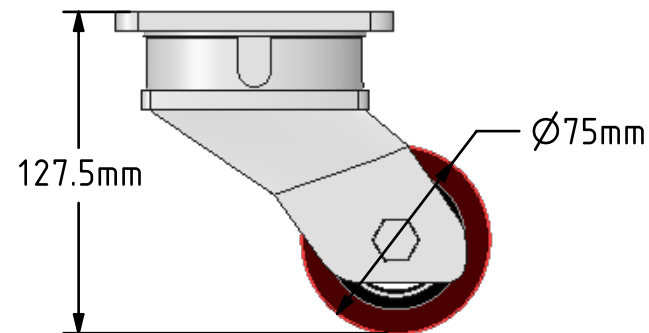
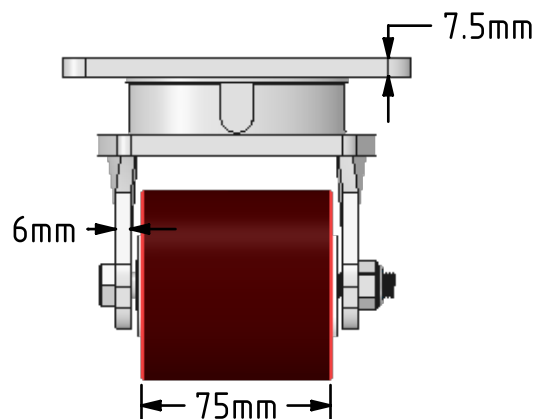
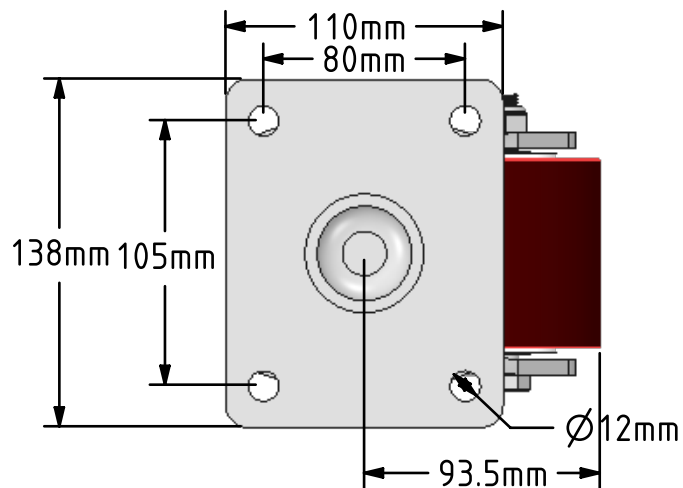
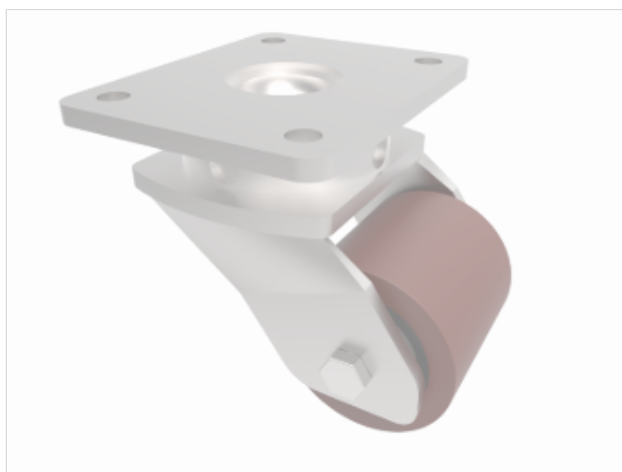



DRAWING DISCLAIMER
 COPYRIGHT OF THIS DRAWING IS RESERVED BY BIL GROUP LTD. IT IS ISSUED ON CONDITION THAT IT IS NOT REPRODUCED, COPIED, OR DISCLOSED TO A THIRD PARTY EITHER WHOLLY OR IN PART WITHOUT THE CONSENT IN WRITING OF BIL GROUP LTD.



Description:
 BZL75PTBJ

Fabricated swivel castor with a top plate fixing fitted with a polyurethane tyred steel core roller with ball bearings. Wheel diameter 75mm, tread width 75mm, overall height 127.5mm, top plate 138mm x 110mm, hole centres 105mm x 80mm. Load capacity 550kg.



	NAME	DATE	BIL Group Ltd, Porte Marsh Road, Calne Wiltshire, SN11 9BW, United Kingdom Tel +44 (0)1249 822 222 Fax: +44 (0)1249 822 300 www.bilgroup.co.uk	
DRAWN	Matt	27/11/17	 TITLE BZL75PTBJ	
APPROVED BY	Chris	27/11/17		
SCALE	1:3	27/11/17		
WEIGHT	3.894kg	27/11/17		
UNLESS OTHERWISE SPECIFIED DIMENSIONS ARE IN MILLIMETRES			SIZE	DWG NO.
Unspecified Tolerances Machining ± 0.25mm Fabrication ± 1mm			A4	BILCW03BZL75PTBJ__02
			FILE NAME	BILCW03BZL75PTBJ__02.PDF
				REV 2
				SHEET 1 OF 1