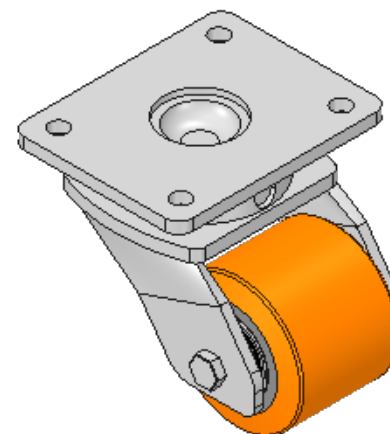
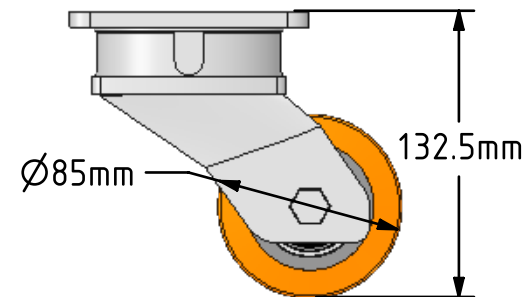
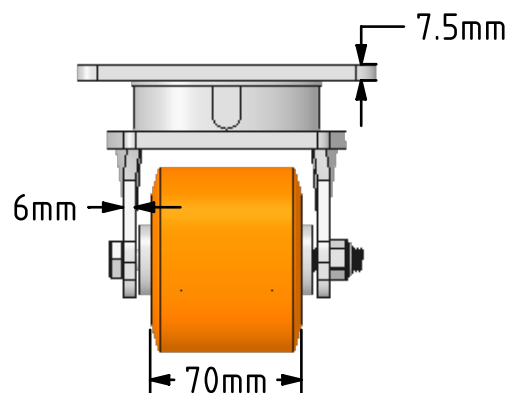
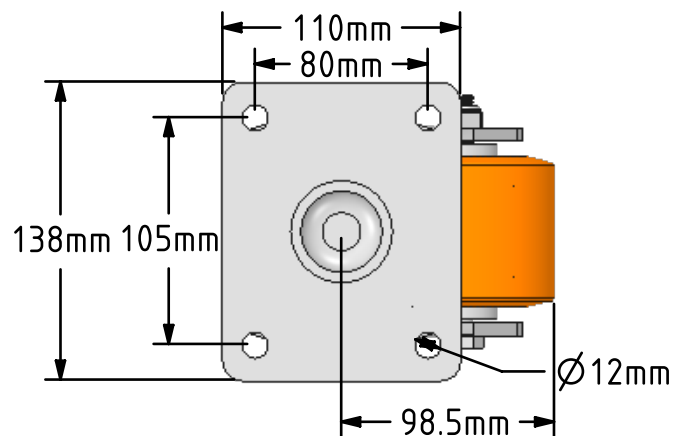



DRAWING DISCLAIMER
 COPYRIGHT OF THIS DRAWING IS RESERVED BY BIL GROUP LTD. IT IS ISSUED ON CONDITION THAT IT IS NOT REPRODUCED, COPIED, OR DISCLOSED TO A THIRD PARTY EITHER WHOLLY OR IN PART WITHOUT THE CONSENT IN WRITING OF BIL GROUP LTD.



Description:
 BZL85PTBJ

Fabricated swivel castor with a top plate fixing fitted with a polyurethane tyred steel core roller with ball bearings. Wheel diameter 85mm, tread width 70mm, overall height 133mm, top plate 138mm x 110mm, hole centres 105mm x 80mm. Load capacity 700kg.



	NAME	DATE	BIL Group Ltd, Porte Marsh Road, Calne Wiltshire, SN11 9BW, United Kingdom Tel +44 (0)1249 822 222 Fax: +44 (0)1249 822 300 www.bilgroup.co.uk	
DRAWN	Matt	20/03/18		
APPROVED BY	Chris	20/03/18		
SCALE	2:7	20/03/18		
WEIGHT	3.929kg	20/03/18		
UNLESS OTHERWISE SPECIFIED DIMENSIONS ARE IN MILLIMETRES			TITLE	
Unspecified Tolerances Machining ± 0.25mm Fabrication ± 1mm			SIZE	REV
			A4	1
			DWG NO.	
			BZL85PTBJ	
			FILE NAME	SHEET 1 OF 1
			BILCW03BZL85PTBJ_01	