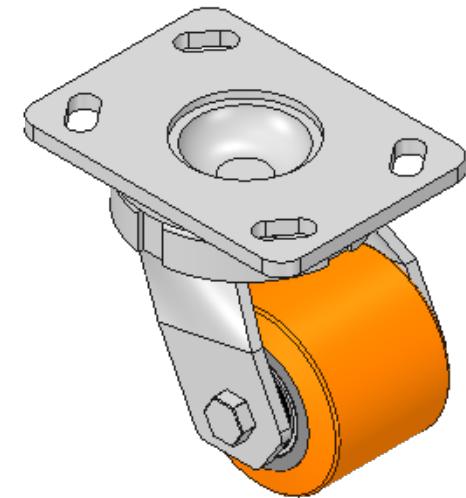
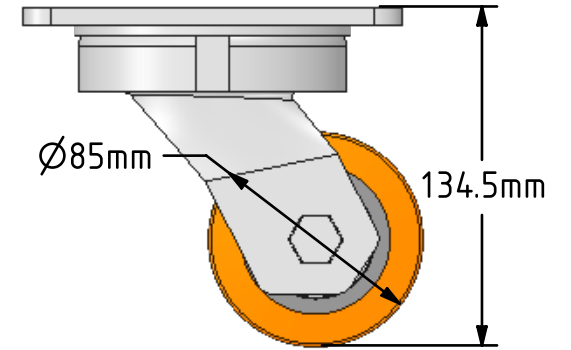
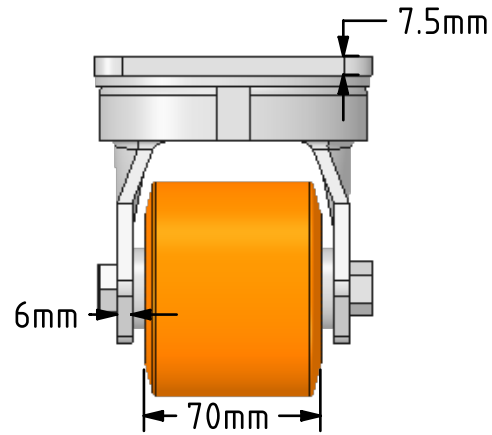
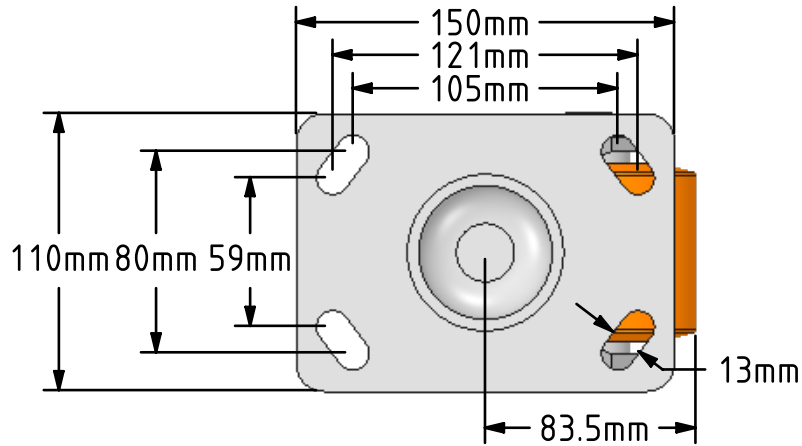



**DRAWING DISCLAIMER**  
 COPYRIGHT OF THIS DRAWING IS RESERVED BY BIL GROUP LTD. IT IS ISSUED ON CONDITION THAT IT IS NOT REPRODUCED, COPIED, OR DISCLOSED TO A THIRD PARTY EITHER WHOLLY OR IN PART WITHOUT THE CONSENT IN WRITING OF BIL GROUP LTD.



**Description:**  
 BZLL85PTBJ

Fabricated swivel castor with a top plate fixing fitted with a polyurethane on cast iron centred wheel with ball journal bearings. Wheel diameter 85mm, tread width 70mm, overall height 135mm, top plate 150mm x 110mm, hole centres 105mm x 80mm. Load capacity 700kg.



	NAME	DATE	 BIL Group Ltd, Porte Marsh Road, Calne Wiltshire, SN11 9BW, United Kingdom Tel +44 (0)1249 822 222 Fax: +44 (0)1249 822 300 www.bilgroup.co.uk
DRAWN	Matt	20/03/18	
APPROVED BY	Tim W	20/03/18	
SCALE	1:3	20/03/18	
WEIGHT	3.887kg	20/03/18	
UNLESS OTHERWISE SPECIFIED DIMENSIONS ARE IN MILLIMETRES  Unspecified Tolerances Machining ± 0.25mm Fabrication ± 1mm			TITLE <b>BZLL85PTBJ</b>
SIZE	DWG NO.		REV
A4	BILCW03BZLL85PTBJ_01		1
FILE NAME	BILCW03BZLL85PTBJ_01.PDF		SHEET 1 OF 1