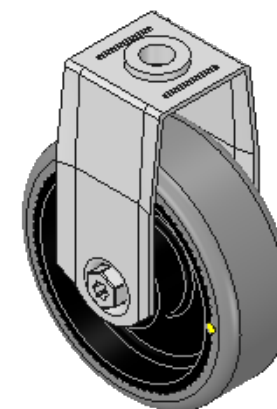
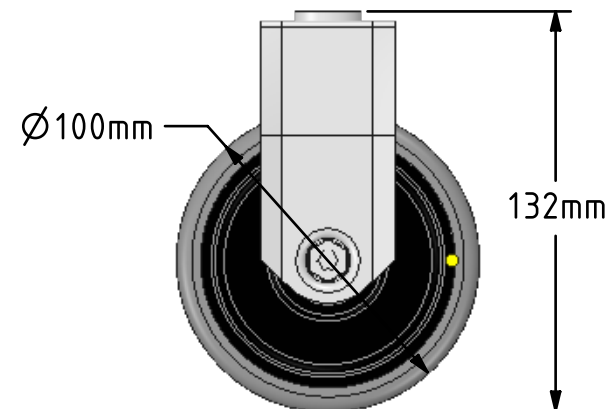
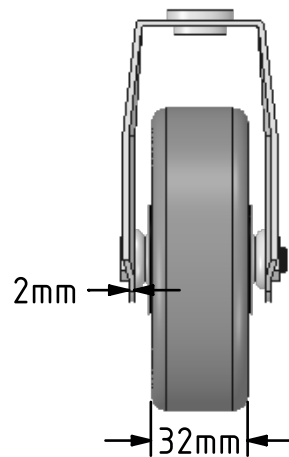
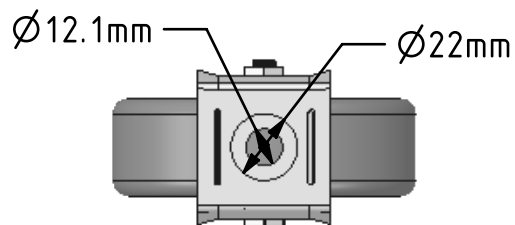


DRAWING DISCLAIMER  
 COPYRIGHT OF THIS DRAWING IS RESERVED BY BIL GROUP LTD. IT IS ISSUED ON CONDITION THAT IT IS NOT REPRODUCED, COPIED, OR DISCLOSED TO A THIRD PARTY EITHER WHOLLY OR IN PART WITHOUT THE CONSENT IN WRITING OF BIL GROUP LTD.



Description:  
 BZMF100GRECBJBH12

Pressed steel fixed castor with a 12mm bolt hole fitted with a grey electrically conductive tyre on a black polypropylene centred wheel with ball bearing. Wheel diameter 100mm, tread width 32mm, overall height 132mm, Load capacity 90kg. Conductive offers a resistance R<10KΩ



	NAME	DATE
DRAWN	Matt	22/06/18
APPROVED BY	Chris	22/06/18
SCALE	2:5	22/06/18
WEIGHT	0.399kg	22/06/18

UNLESS OTHERWISE SPECIFIED DIMENSIONS ARE IN MILLIMETRES

Unspecified Tolerances  
 Machining ± 0.25mm  
 Fabrication ± 1mm



BIL Group Ltd, Porte Marsh Road, Calne  
 Wiltshire, SN11 9BW, United Kingdom  
 Tel +44 (0)1249 822 222 Fax: +44 (0)1249 822 300  
 www.bilgroup.co.uk

TITLE

BZMF100GRECBJBH12

SIZE DWG NO.

A4

BILCW03BZMF100GRECBJBH12\_\_01

REV

1

FILE NAME BILCW03BZMF100GRECBJBH12\_\_01.PDF SHEET 1 OF 1