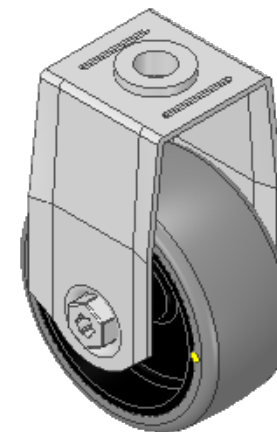
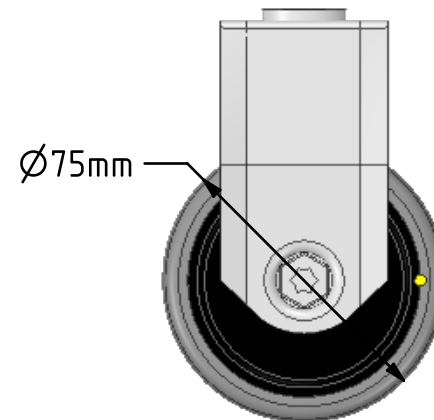
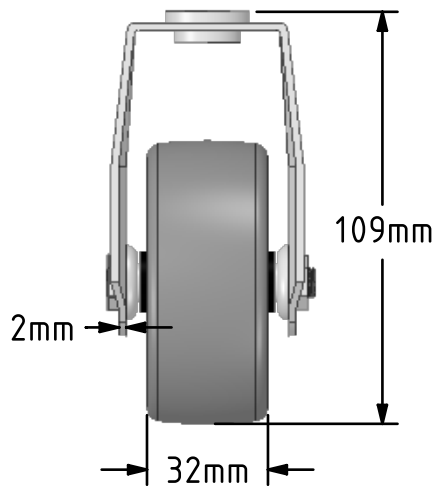
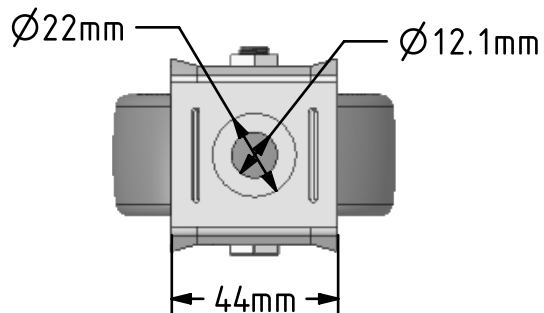
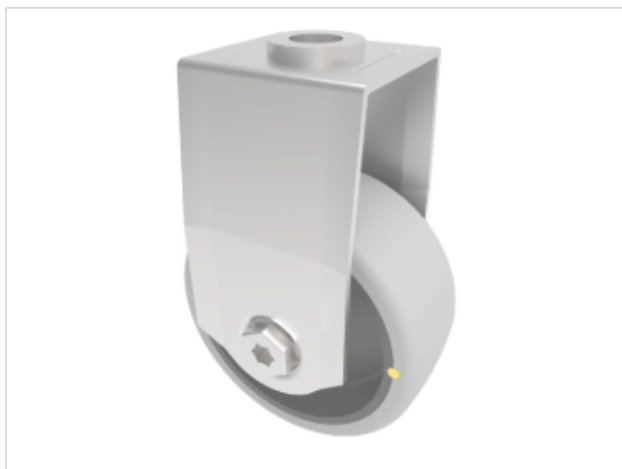


DRAWING DISCLAIMER
 COPYRIGHT OF THIS DRAWING IS RESERVED BY BIL GROUP LTD. IT IS ISSUED ON CONDITION THAT IT IS NOT REPRODUCED, COPIED, OR DISCLOSED TO A THIRD PARTY EITHER WHOLLY OR IN PART WITHOUT THE CONSENT IN WRITING OF BIL GROUP LTD.



Description:
 BZMF75GRECBH12

Pressed steel fixed castor with a 12mm bolt hole fitted with a grey electrically conductive tyre on a black polypropylene centred wheel with plain bore. Wheel diameter 75mm, tread width 32mm, overall height 109mm, Load capacity 70kg. Conductive offers a resistance $R < 10K\Omega$



	NAME	DATE
DRAWN	Matt	11/03/19
APPROVED BY	Chris	11/03/19
SCALE	1:2	11/03/19
WEIGHT	0.281kg	11/03/19

UNLESS OTHERWISE SPECIFIED DIMENSIONS ARE IN MILLIMETRES

Unspecified Tolerances
 Machining $\pm 0.25\text{mm}$
 Fabrication $\pm 1\text{mm}$



BIL Group Ltd, Porte Marsh Road, Calne
 Wiltshire, SN11 9BW, United Kingdom
 Tel +44 (0)1249 822 222 Fax: +44 (0)1249 822 300
 www.bilgroup.co.uk

TITLE

BZMF75GRECBH12

SIZE	DWG NO.	REV
A4	BILCW03BZMF75GRECBH12_01	1

FILE NAME BILCW03BZMF75GRECBH12_01.PDF SHEET 1 OF 1