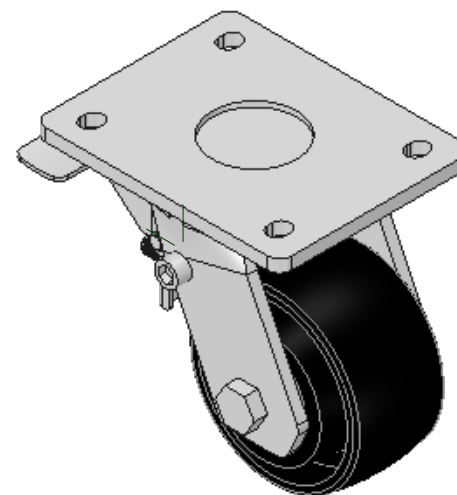
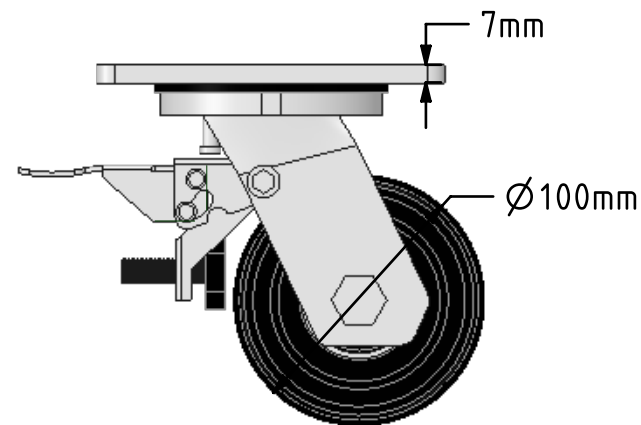
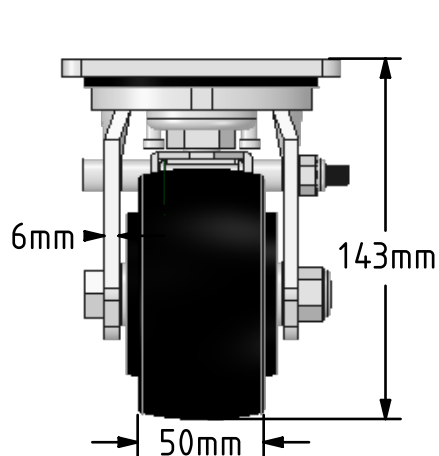
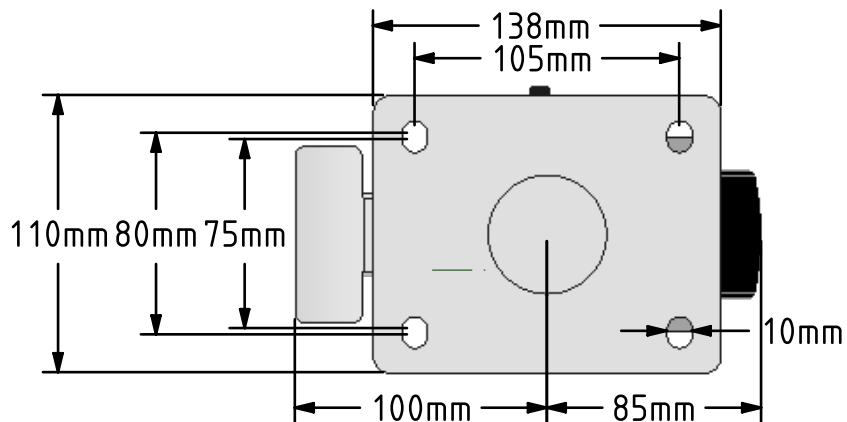


DRAWING DISCLAIMER
 COPYRIGHT OF THIS DRAWING IS RESERVED BY BIL GROUP LTD. IT IS ISSUED ON CONDITION THAT IT IS NOT REPRODUCED, COPIED, OR DISCLOSED TO A THIRD PARTY EITHER WHOLLY OR IN PART WITHOUT THE CONSENT IN WRITING OF BIL GROUP LTD.



Description:
 BZMJ100CIBJSWB

Fabricated white zinc ROHS plated swivel castor with a top plate fixing fitted with a cast iron wheel with ball bearings and total lock brake. Wheel diameter 100mm, tread width 50mm, overall height 143mm, plate size 138mm x 110mm, hole centres 105mm x 80mm/75mm. Load capacity 400kgs.



	NAME	DATE
DRAWN	Matt	16/04/18
APPROVED BY	Chris	16/04/18
SCALE	1:3	16/04/18
WEIGHT	4.312kg	16/04/18

 BIL Group Ltd, Porte Marsh Road, Calne
 Wiltshire, SN11 9BW, United Kingdom
 Tel +44 (0)1249 822 222 Fax: +44 (0)1249 822 300
 www.bilgroup.co.uk

TITLE	BZMJ100CIBJSWB	
-------	----------------	--

UNLESS OTHERWISE SPECIFIED DIMENSIONS ARE IN MILLIMETRES Unspecified Tolerances Machining ± 0.25mm Fabrication ± 1mm	SIZE	DWG NO.	REV
	A4	BILCW03BZMJ100CIBJSWB_01	1
FILE NAME		BILCW03BZMJ100CIBJSWB_01.PDF	SHEET 1 OF 1