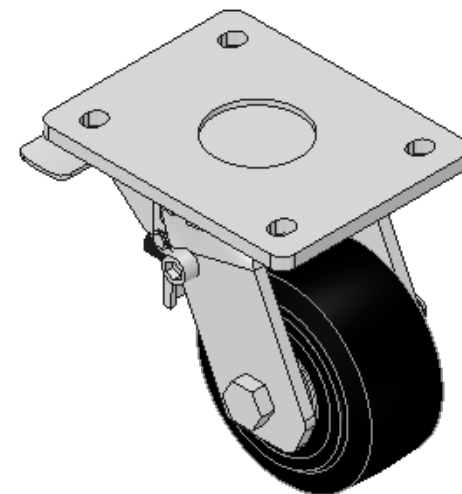
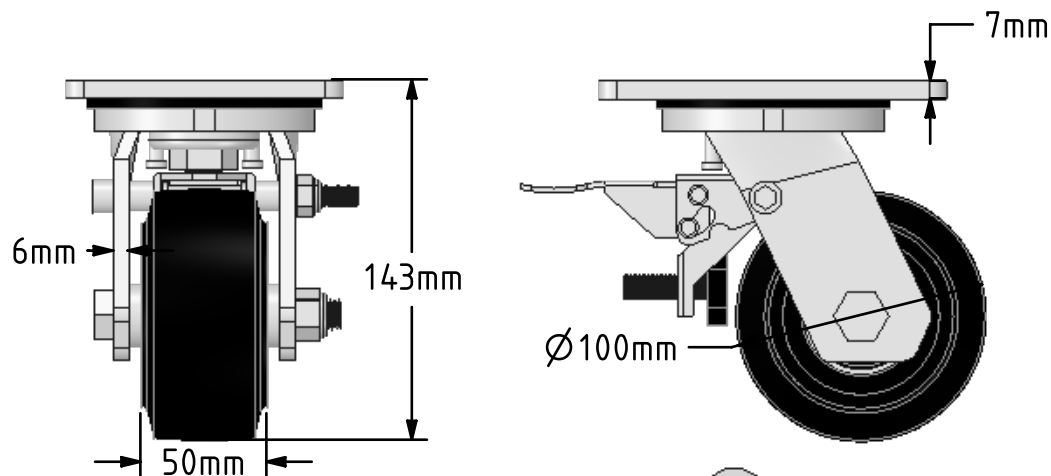
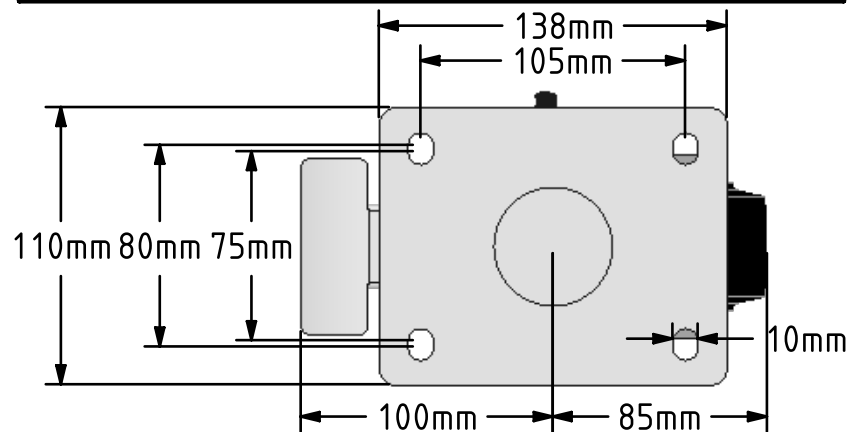


DRAWING DISCLAIMER
 COPYRIGHT OF THIS DRAWING IS RESERVED BY BIL GROUP LTD. IT IS ISSUED ON CONDITION THAT IT IS NOT REPRODUCED, COPIED, OR DISCLOSED TO A THIRD PARTY EITHER WHOLLY OR IN PART WITHOUT THE CONSENT IN WRITING OF BIL GROUP LTD.



Description:
 BZMJ100CRBJSWB

Fabricated white zinc ROHS plated swivel castor with a top plate fixing fitted with a black elastic rubber on cast iron centred wheel with ball bearings and total lock brake. Wheel diameter 100mm, tread width 50mm, overall height 143mm, top plate 138mm x 110mm, hole centres 105mm x 80mm/75mm. Load capacity 210kg.



	NAME	DATE
DRAWN	Matt	13/04/18
APPROVED BY	Chris	13/04/18
SCALE	1:3	13/04/18
WEIGHT	3.402kg	13/04/18

 BIL Group Ltd, Porte Marsh Road, Calne
 Wiltshire, SN11 9BW, United Kingdom
 Tel +44 (0)1249 822 222 Fax: +44 (0)1249 822 300
 www.bilgroup.co.uk

TITLE	
BZMJ100CRBJSWB	

UNLESS OTHERWISE SPECIFIED DIMENSIONS ARE IN MILLIMETRES
 Unspecified Tolerances
 Machining ± 0.25mm
 Fabrication ± 1mm

SIZE	DWG NO.	REV
A4	BILCW03BZMJ100CRBJSWB_01	1
FILE NAME		SHEET 1 OF 1
BILCW03BZMJ100CRBJSWB_01.PDF		