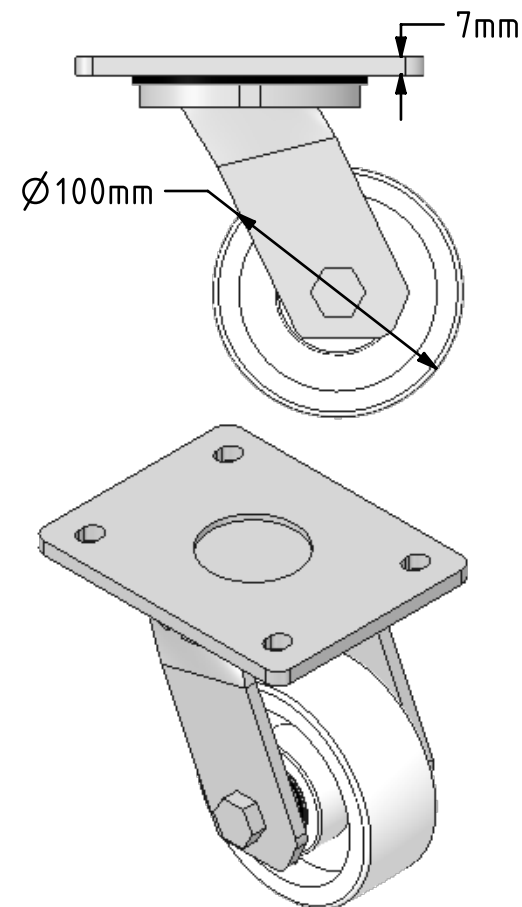
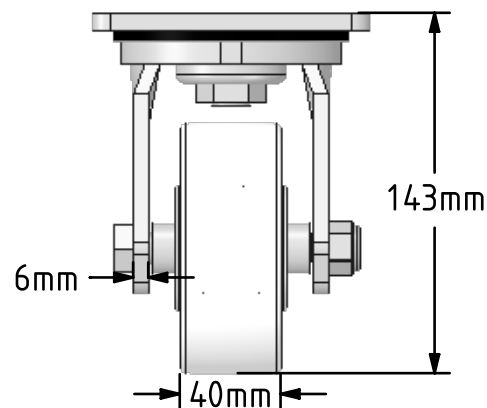
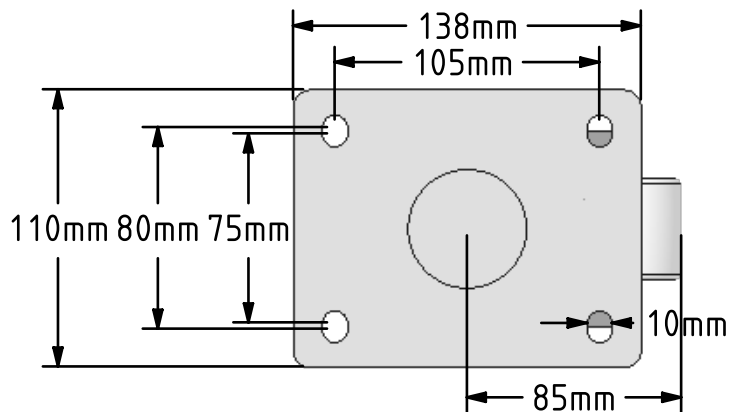



**DRAWING DISCLAIMER**  
 COPYRIGHT OF THIS DRAWING IS RESERVED BY BIL GROUP LTD. IT IS ISSUED ON CONDITION THAT IT IS NOT REPRODUCED, COPIED, OR DISCLOSED TO A THIRD PARTY EITHER WHOLLY OR IN PART WITHOUT THE CONSENT IN WRITING OF BIL GROUP LTD.



**Description:**  
 BZMJ100NYBJ

Fabricated white zinc ROHS plated swivel castor with a top plate fixing fitted with a white nylon wheel with ball journal bearings. Wheel diameter 100mm, tread width 40mm, overall height 143mm, top plate 138mm x 110mm, hole centres 105mm x 80mm/75mm. Load capacity 600kg.



|   | NAME    | DATE     | BIL Group Ltd, Porte Marsh Road, Calne<br>Wiltshire, SN11 9BW, United Kingdom<br>Tel +44 (0)1249 822 222 Fax: +44 (0)1249 822 300<br>www.bilgroup.co.uk |  |
|---|---------|----------|---|--|
| DRAWN   | Matt    | 11/04/18 |    |  |
| APPROVED BY   | Tim W   | 11/04/18 |   |  |
| SCALE   | 1:3     | 11/04/18 |   |  |
| WEIGHT  | 2.249kg | 11/04/18 |   |  |
| UNLESS OTHERWISE SPECIFIED DIMENSIONS ARE IN MILLIMETRES<br><br>Unspecified Tolerances<br>Machining ± 0.25mm<br>Fabrication ± 1mm |         |          | TITLE<br><br><b>BZMJ100NYBJ</b>   | SIZE DWG NO.<br>A4 BILCW03BZMJ100NYBJ_01         |
|   |         |          | REV<br>1  | FILE NAME BILCW03BZMJ100NYBJ_01.PDF SHEET 1 OF 1 |