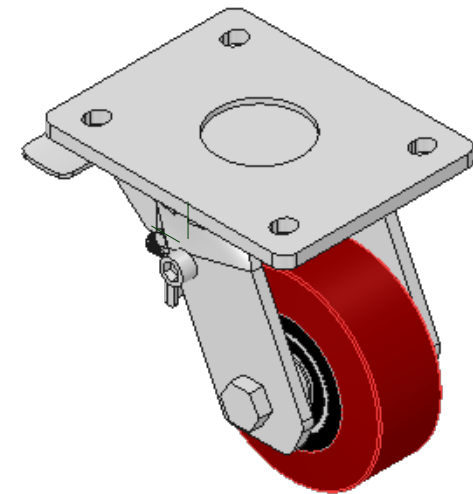
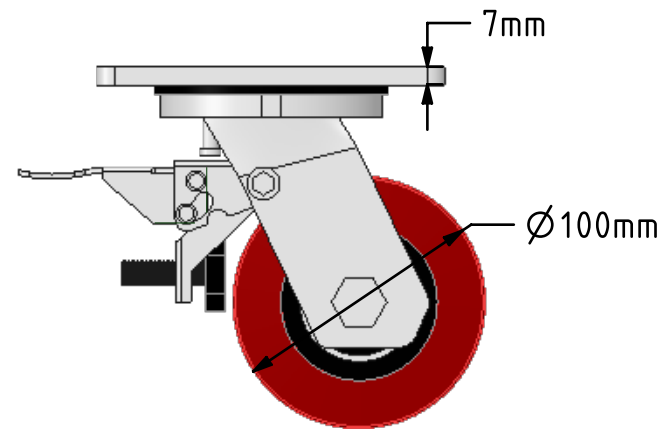
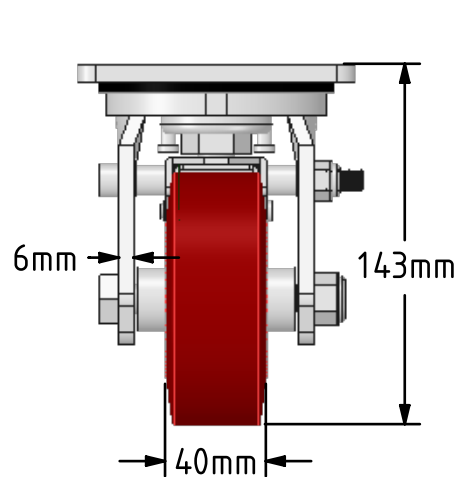
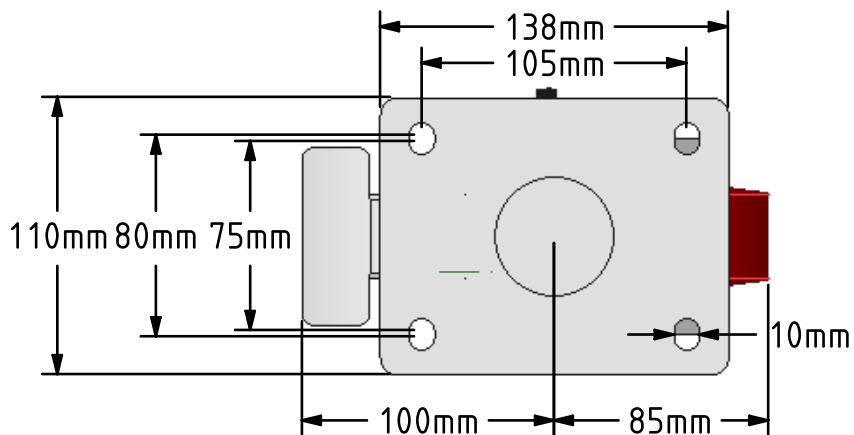


DRAWING DISCLAIMER  
 COPYRIGHT OF THIS DRAWING IS RESERVED BY BIL GROUP LTD. IT IS ISSUED ON CONDITION THAT IT IS NOT REPRODUCED, COPIED, OR DISCLOSED TO A THIRD PARTY EITHER WHOLLY OR IN PART WITHOUT THE CONSENT IN WRITING OF BIL GROUP LTD.



Description:  
 BZMJ100PTBJSWB

Fabricated white zinc ROHS plated swivel castor with a top plate fixing fitted with a brown polyurethane tyred oncast iron centred wheel with ball bearings and total lock brake. Wheel diameter 100mm, tread width 40mm, overall height 143mm, top plate 138mm x 110mm, Hole centres 105mm x 80mm/75mm. Load capacity 300kg.



	NAME	DATE
DRAWN	Matt	18/04/18
APPROVED BY	Tim W	18/04/18
SCALE	1:3	18/04/18
WEIGHT	3.128kg	18/04/18

 BIL Group Ltd, Porte Marsh Road, Calne Wiltshire, SN11 9BW, United Kingdom  
 Tel +44 (0)1249 822 222 Fax: +44 (0)1249 822 300  
 www.bilgroup.co.uk

TITLE		
BZMJ100PTBJSWB		
SIZE	DWG NO.	REV
A4	BILCW03BZMJ100PTBJSWB_01	1
FILE NAME		SHEET 1 OF 1
BILCW03BZMJ100PTBJSWB_01.PDF		

UNLESS OTHERWISE SPECIFIED DIMENSIONS ARE IN MILLIMETRES  
 Unspecified Tolerances  
 Machining ± 0.25mm  
 Fabrication ± 1mm