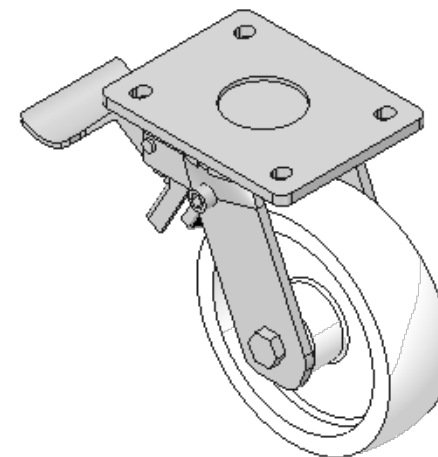
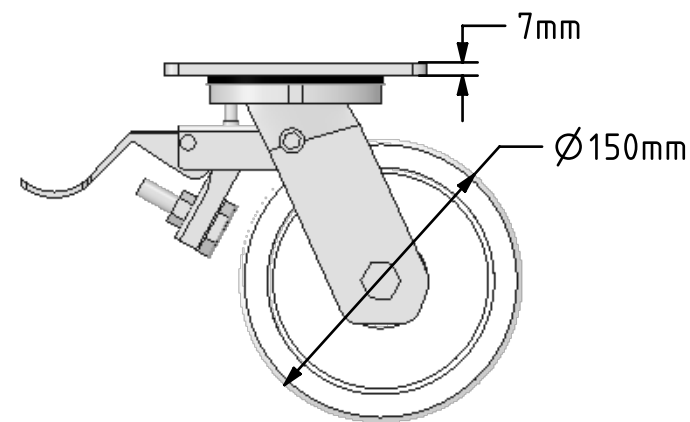
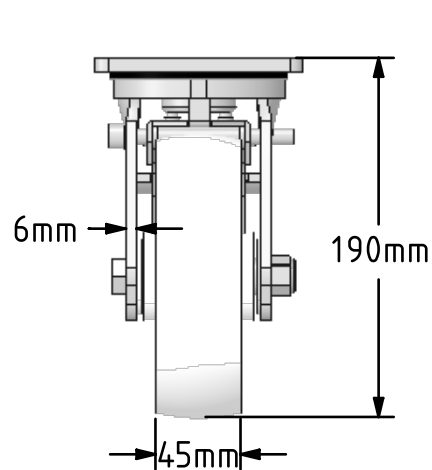
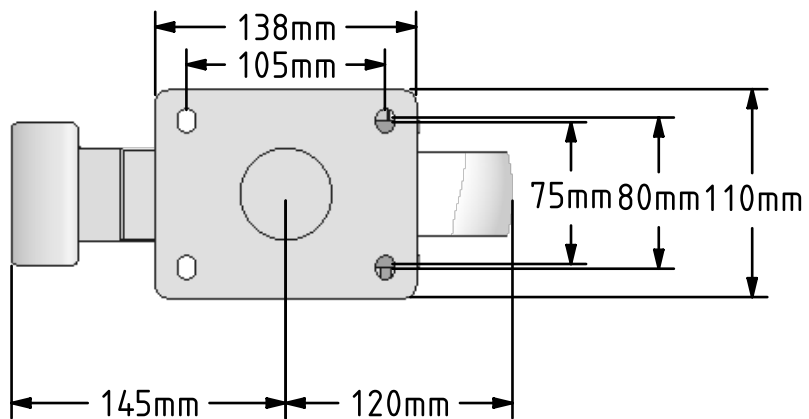


DRAWING DISCLAIMER  
 COPYRIGHT OF THIS DRAWING IS RESERVED BY BIL GROUP LTD. IT IS ISSUED ON CONDITION THAT IT IS NOT REPRODUCED, COPIED, OR DISCLOSED TO A THIRD PARTY EITHER WHOLLY OR IN PART WITHOUT THE CONSENT IN WRITING OF BIL GROUP LTD.



**Description:**  
 BZMJ150NYSWB

Fabricated white zinc ROHS plated swivel castor with a top plate fixing fitted with a white nylon wheel with plain bearings and total lock brake. Wheel diameter 150mm, tread width 45mm, overall height 190mm, top plate 138mm x 110mm, hole centres 105mm x 80mm/75mm. Load capacity 600kg.



	NAME	DATE
DRAWN	Matt	16/11/16
APPROVED BY	Tim W	16/11/16
SCALE	1:4	16/11/16
WEIGHT	3.151kg	16/11/16

UNLESS OTHERWISE SPECIFIED DIMENSIONS ARE IN MILLIMETRES

Unspecified Tolerances  
 Machining ± 0.25mm  
 Fabrication ± 1mm



BIL Group Ltd, Porte Marsh Road, Calne  
 Wiltshire, SN11 9BW, United Kingdom  
 Tel +44 (0)1249 822 222 Fax: +44 (0)1249 822 300  
 www.bilgroup.eu

TITLE

**BZMJ150NYSWB**

SIZE

DWG NO.

A4

BILCW03BZMJ150NYSWB

REV

2

FILE NAME

BILCW03BZMJ150NYSWB.PDF

SHEET 1 OF 1