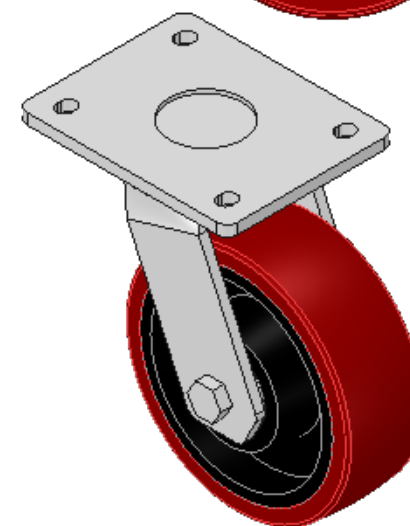
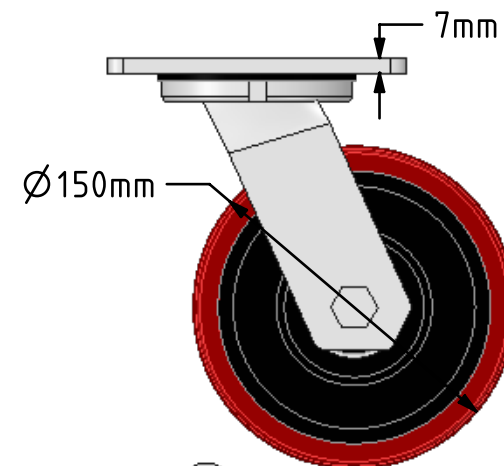
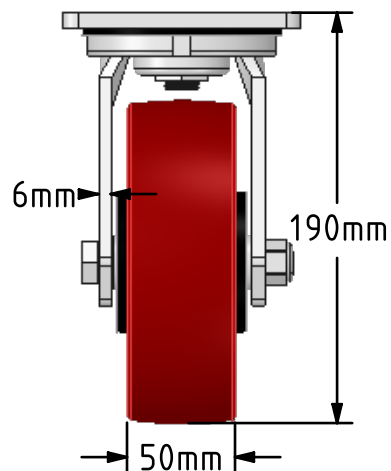
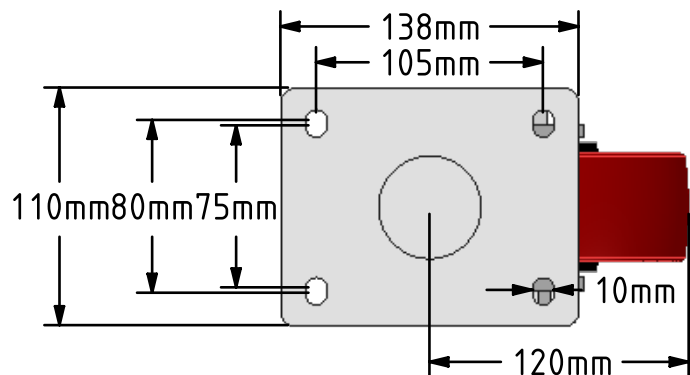
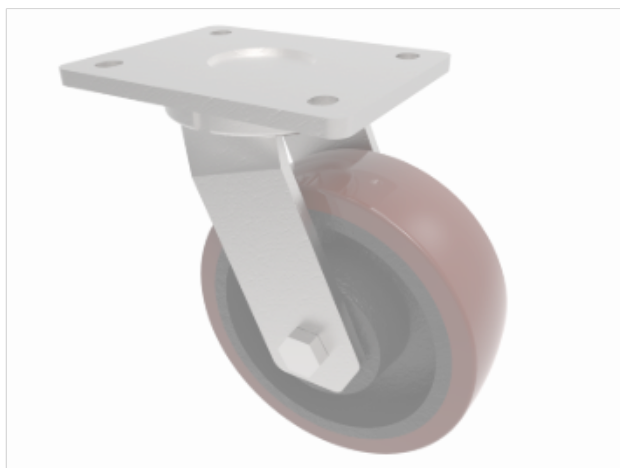



DRAWING DISCLAIMER  
 COPYRIGHT OF THIS DRAWING IS RESERVED BY BIL GROUP LTD. IT IS ISSUED ON CONDITION THAT IT IS NOT REPRODUCED, COPIED, OR DISCLOSED TO A THIRD PARTY EITHER WHOLLY OR IN PART WITHOUT THE CONSENT IN WRITING OF BIL GROUP LTD.



Description:  
 BZMJ150PTBJ

Fabricated white zinc ROHS plated swivel castor with a top plate fixing fitted with a polyurethane tyre cast iron centred wheel with ball bearings. Wheel diameter 150mm, tread width 50mm, overall height 190mm, top plate 138mm x 110mm, hole centres 105mm x 80/75mm. Load capacity 600kg.



	NAME	DATE	 BIL Group Ltd, Porte Marsh Road, Calne Wiltshire, SN11 9BW, United Kingdom Tel +44 (0)1249 822 222 Fax: +44 (0)1249 822 300 www.bilgroup.co.uk
DRAWN	Matt	09/02/18	
APPROVED BY	Chris	09/02/18	
SCALE	2:7	09/02/18	
WEIGHT	4.521kg	09/02/18	TITLE
UNLESS OTHERWISE SPECIFIED DIMENSIONS ARE IN MILLIMETRES  Unspecified Tolerances Machining ± 0.25mm Fabrication ± 1mm			BZMJ150PTBJ
SIZE		DWG NO.	REV
A4		BILCW03BZMJ150PTBJ__01	1
FILE NAME		BILCW03BZMJ150PTBJ__01.PDF	SHEET 1 OF 1