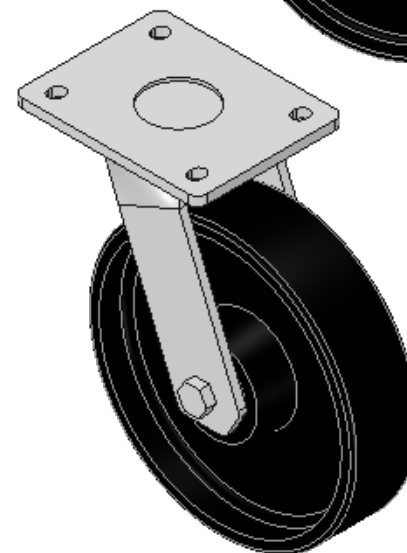
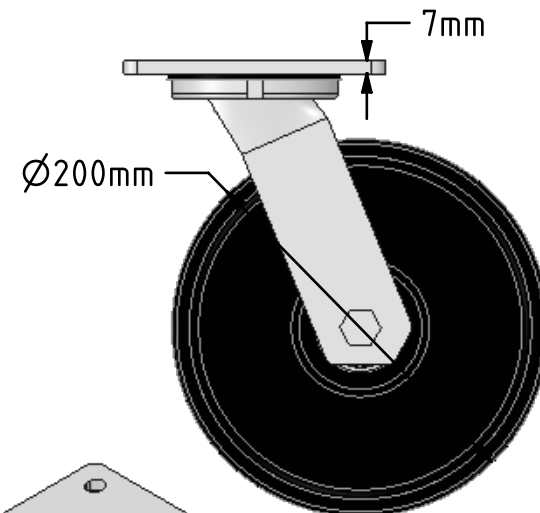
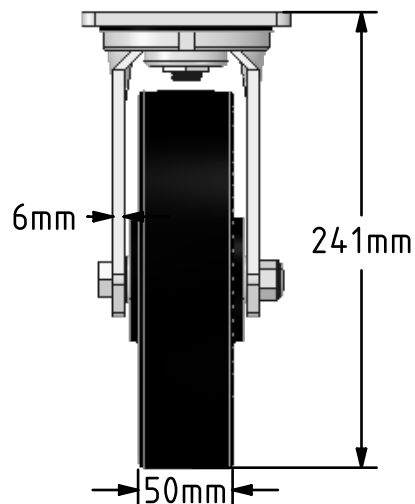
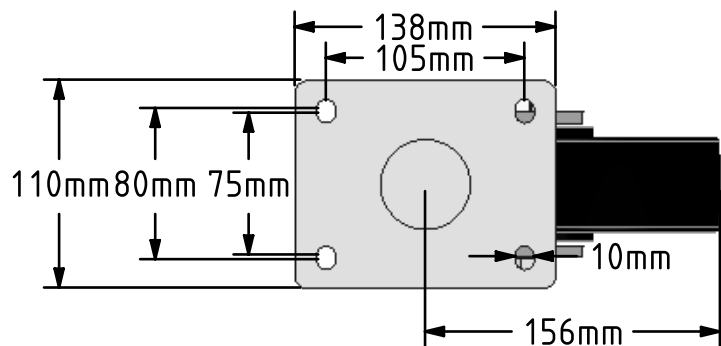



DRAWING DISCLAIMER
 COPYRIGHT OF THIS DRAWING IS RESERVED BY BIL GROUP LTD. IT IS ISSUED ON CONDITION THAT IT IS NOT REPRODUCED, COPIED, OR DISCLOSED TO A THIRD PARTY EITHER WHOLLY OR IN PART WITHOUT THE CONSENT IN WRITING OF BIL GROUP LTD.



Description:
 BZMJ200CIBJ

Fabricated white zinc ROHS plated swivel castor with a top plate fixing fitted with a cast iron wheel with ball bearings. Wheel diameter 200mm, tread width 50mm, overall height 241mm, top plate 138mm x 110mm, hole centres 105mm x 80mm/75mm. Load capacity 600kg.



	NAME	DATE	BIL Group Ltd, Porte Marsh Road, Calne Wiltshire, SN11 9BW, United Kingdom Tel +44 (0)1249 822 222 Fax: +44 (0)1249 822 300 www.bilgroup.co.uk	
DRAWN	Matt	16/04/18	 TITLE BZMJ200CIBJ	
APPROVED BY	Chris	16/04/18		
SCALE	1:4	16/04/18		
WEIGHT	6.91kg	16/04/18		
UNLESS OTHERWISE SPECIFIED DIMENSIONS ARE IN MILLIMETRES			SIZE	DWG NO.
Unspecified Tolerances Machining ± 0.25mm Fabrication ± 1mm			A4	BILCW03BZMJ200CIBJ__01
			REV	1
			FILE NAME	BILCW03BZMJ200CIBJ__01.PDF SHEET 1 OF 1